

SECTION 2: PART A

SERVICE SPECIFICATION FOR ROUTE No. 183

CONTENTS

	Page
1. Tenders Required	2
2. Proposed Changes	2
3. Terminals	2
4. Days of Operation	2
5. Vehicle Type	3
6. Frequencies	4
7. Minimum Performance Standards	10
8. Running Times	11
9. Layovers	11
10. Timing Constraints	11
11. Control Strategy	12
12. Operational Considerations	12
13. Stopping Arrangements	13
14. Timing Points and Mileages	13
15. Vehicle Livery	14
 <u>Appendices</u>	
A. Route Record	15
B. Sample Running Times for Route No. 183	18

This document should be read in conjunction with the Corporation's Guide for Tenderers (Part A: Explanatory Notes - Service Requirements). Where appropriate, reference is made to the relevant section.

1. TENDERS REQUIRED

This document describes the service for which the Corporation requires Tenders and Tenderers **must** submit a fully compliant bid. In addition, Tenderers **may** wish to draw upon their local knowledge to submit alternative bids which offer improved value for money in meeting passenger needs. These might incorporate, for example, different timings, frequencies, route structures and/or vehicles. The Corporation will welcome such bids and give them careful consideration.

For more information, please refer to Section 2.1 of Part A of the Guide for Tenderers.

2. PROPOSED CHANGES

At this time, no changes are proposed to the existing service for introduction prior to the commencement of the new Route Agreement for Route No. 183.

Tenderers should note that the following alterations (subject to consultation) are proposed as part of this Service Specification for introduction with the new Route Agreement:

- Mondays to Saturdays daytime frequencies are increased from every 12 minutes to every 10 minutes.
- The Mondays to Fridays schoolday journey at 0743 ex Golders Green Station Forecourt is withdrawn.
- The Mondays to Fridays schoolday journey at 0723 ex Pinner, Love Lane is withdrawn.
- Extension to the traffic day to meet later trains at Kenton Station.

3. TERMINALS

Route No. 183 will operate between Pinner, Love Lane and Golders Green Station Forecourt.

Full details of the route to be followed, the permitted terminal workings and the available stands are shown at Appendix A. Tenderers should particularly note the information relating to the shared usage of stands, the taking of meal reliefs and the use of ferry vehicles.

4. DAYS OF OPERATION

One timetable must be offered for Route No. 183 which will operate as follows:

DAY OF OPERATION	
Mondays to Fridays	Section 6.1
Mondays to Fridays Schooldays	Section 6.2
Saturdays & Good Friday	Section 6.3
Sundays	Section 6.4
Christmas Day	No service
Boxing Day	Section 6.5
Other Public Holidays	Sunday service

5. VEHICLE TYPE

Please refer to Section 2.5 of Part A of the Guide for Tenderers.

Route No. 183 is currently approved for vehicles which are a maximum of 10.6 metres long and 2.55 metres wide. A formal route test will be required for vehicles which exceed these dimensions. This will be arranged with the successful Tenderer.

The service requirement set out in Section 6 assumes that dual door, double deck buses with a minimum capacity of 87 of which approximately 60 should be seated, will be used on this route. Luggage space should also be provided.

Tenderers must submit proposals based on new vehicles. These must be of a low floor design and be accessible to wheelchairs by means of a powered ramp.

Tenderers should refer to the vehicle design (including accessibility) features contained in Schedule II to Annex B of the Framework Agreement and Section 2 Part B of the Master ITT (Version 2 issued June 2005).

Tenderers may also submit bids based on using existing vehicles. Tenderers are asked to specify what refurbishment would be carried out on existing buses and the expected timescale of those works. See Master ITT (Version 2 issued June 2005).

6. FREQUENCIES

The level of service (e.g. every 15 minutes) required by the Corporation is described in terms of the interval between departures. Whilst a completely regular service at the specified frequency should be possible at most times, occasionally a bus may be timetabled to depart up to five minutes earlier or later than the regular time. In addition, journeys with specific start or finish times are required. These times must be adhered to.

Tenderers should note that when the specified frequency changes (e.g. between the peak and midday periods), the scheduled interval between buses should never be greater than that provided by the lower of the two frequencies **AT ANY POINT ON THE ROUTE**.

Tenderers should note that unless otherwise stated **all** journeys should operate between the terminal points defined in each direction.

6.1 Mondays to Fridays

1. Pinner, Love Lane to Golders Green Station Forecourt

0510 - 0535	Every 20 minutes
0536 - 0605	Every 15 minutes
0606 - 0630	Every 12 minutes
0631 - 1900	Every 10 minutes
1901 - 1935	Every 12 minutes
1936 - 0030	Every 15 minutes

First departure from Pinner, Love Lane no later than 0515.

Last departure from Pinner, Love Lane no earlier than 0025.

Tenderers should ensure that buses are no more than 10 minutes apart at West Hendon Broadway, Herbert Road between 0700 and 0900 and between 1505 and 1630.

2. Golders Green Station Forecourt to Pinner, Love Lane

0500 - 0545	Every 20 minutes
0546 - 0615	Every 15 minutes
0616 - 0650	Every 12 minutes
0651 - 1905	Every 10 minutes
1906 - 2005	Every 12 minutes
2006 - 0025	Every 15 minutes

First departure from Golders Green Station Forecourt no later than 0505.

Last departure from Golders Green Station Forecourt no earlier than 0020.

Tenderers should ensure that buses are no more than 10 minutes apart at Harrow, Bus Station between 0730 and 0900 and between 1505 and 1630.

6.2 Mondays to Fridays Schooldays

1. Kingsbury, Jews Free School to Golders Green Station Forecourt
1555 One journey (Mondays to Thursdays Schooldays only)
1340 One journey (Fridays Schooldays only)*

2. Golders Green Station Forecourt to Pinner, Love Lane
0755 One journey

The journeys shown in Section 6.2 are specifically designed to meet the start and finish times of the Jews' Free School in Kingsbury. It is possible that these times may be altered during the life of the contract. Tenderers should indicate whether they are able to adjust the times of the specified journeys by up to 20 minutes (earlier or later) without alteration to the contract price. It may also be necessary for afternoon journeys to operate earlier than stated at the end of term and on other occasions at short notice.

* **Note** - On Fridays Schooldays, the bus should depart Kingsbury, Jews Free School at 1440 during British Summer Time and at 1340 as stated above during the rest of the year.

6.3 Saturdays & Good Friday

1. Pinner, Love Lane to Golders Green Station Forecourt

0510 - 0655	Every 20 minutes
0656 - 0755	Every 15 minutes
0756 - 0845	Every 12 minutes
0846 - 1830	Every 10 minutes
1831 - 1900	Every 12 minutes
1901 - 0030	Every 15 minutes

First departure from Pinner, Love Lane no later than 0515.

Last departure from Pinner, Love Lane no earlier than 0025.

Tenderers should ensure that buses are no more than 10 minutes apart at West Hendon Broadway, Herbert Road between 0920 and 1100.

2. Golders Green Station Forecourt to Pinner, Love Lane

0500 - 0645	Every 20 minutes
0646 - 0730	Every 15 minutes
0731 - 0835	Every 12 minutes
0836 - 1835	Every 10 minutes
1836 - 1935	Every 12 minutes
1936 - 0025	Every 15 minutes

First departure from Golders Green Station Forecourt no later than 0505.

Last departure from Golders Green Station Forecourt no earlier than 0020.

Tenderers should ensure that buses are no more than 10 minutes apart at Harrow, Bus Station between 0915 and 1105.

6.4 Sundays

1. Pinner, Love Lane to Golders Green Station Forecourt

0605 - 0810	Every 30 minutes
0811 - 0910	Every 20 minutes
0911 - 0030	Every 15 minutes

First departure from Pinner, Love Lane no later than 0610.

Last departure from Pinner, Love Lane no earlier than 0025.

Tenderers should ensure that buses are no more than 15 minutes apart at West Hendon Broadway, Herbert Road between 0945 and 1230.

2. Golders Green Station Forecourt to Pinner, Love Lane

0605 - 0810	Every 30 minutes
0811 - 0910	Every 20 minutes
0911 - 0025	Every 15 minutes

First departure from Golders Green Station Forecourt no later than 0610.

Last departure from Golders Green Station Forecourt no earlier than 0020.

Tenderers should ensure that buses are no more than 15 minutes apart at Harrow, Bus Station between 0950 and 1235.

6.5 Boxing Day

1. Pinner, Love Lane to Golders Green Station Forecourt

0810 - 0910	Every 20 minutes
0911 - 0030	Every 15 minutes

First departure from Pinner, Love Lane no later than 0815.
Last departure from Pinner, Love Lane no earlier than 0025.

Tenderers should ensure that buses are no more than 15 minutes apart at West Hendon Broadway, Herbert Road between 0945 and 1230.

2. Golders Green Station Forecourt to Pinner, Love Lane

0810 - 0910	Every 20 minutes
0911 - 0025	Every 15 minutes

First departure from Golders Green Station Forecourt no later than 0815.
Last departure from Golders Green Station Forecourt no earlier than 0020.

Tenderers should ensure that buses are no more than 15 minutes apart at Harrow, Bus Station between 0950 and 1235.

7. MINIMUM PERFORMANCE STANDARDS

Please refer to Section 2.7 of Part A of the Guide for Tenderers.

Tenderers should note that the objective of the Operator of Route No. 183 shall be to operate all scheduled mileage and adhere **fully** to the published timetable. The Operator must use its best endeavours to achieve this.

The **minimum** standards of acceptable performance for Route No. 183 shall be:

Average Excess Wait Time:	No more than 1.10 minutes
Minimum Operated Mileage:	No less than 98.00%

or as notified by the Corporation from time to time. The Operator will be required to achieve or better the standards.

QSI Thresholds

The QSI threshold is the standard of performance to be achieved by the operator in order to qualify for an automatic contract extension (in accordance with Schedule IX of the Framework Agreement).

Average Excess Wait Time Threshold = 0.95 minutes

Summary of proposed QSI coverage: Route No. 183

Note: While London Buses undertakes to carry out QSI surveys at the times and locations specified below, it may prove impossible to rearrange a survey cancelled or nullified at short notice.

Survey locations

Towards Golders Green Station Forecourt

Pinner
Harrow Bus Station
West Hendon Broadway \$

Towards Pinner, Love Lane

Golders Green
West Hendon Broadway \$
Harrow Bus Station

Total scheduled manual QSI surveys per quarter = 96.

\$ This location observed simultaneously in both directions - counted as two surveys.

8. RUNNING TIMES

Extracts from the public timetable with sample running times for Route No. 183 are attached at Appendix B. This gives an indication of the time required to travel the route. Attention is drawn to the variations in running times at different times of the day. Please refer to Section 2.8 of Part A of the Guide for Tenderers for further information.

Tenderers should carefully check the existing running times to ensure that they are appropriate in present traffic conditions. Tenderers should particularly check the existing running times for the Mondays to Fridays afternoon interpeak and the PM peak.

When reviewing existing, and devising new, running times Tenderers should refer to:

- the minimum performance standards for Route No. 183 in Section 7 above;
- the historical performance data provided in Section 1 Part B of the introduction to this ITT;
- the paragraph in Section 12 referring to the proposed extension of the Cashless Boarding zone throughout the whole of the London area.

Tenderers may consider if school summer holiday schedules, incorporating running time reductions, are desirable for this route. In this event, schedules and costs must be submitted separately.

9. LAYOVERS

Under normal circumstances, layover time on stands and at bus stations should be restricted to that required to provide a reliable service. Longer layovers for any other purpose may only be taken with the permission of the Corporation.

10. TIMING CONSTRAINTS

Route No. 183 should be separated from Route No. 240 between Golders Green Station Forecourt and Hendon, Quadrant, during all periods, where possible.

Route No. 183 should be separated from Route No. H18 between North Harrow, Post Office and Kenton Station (in this direction only), during all periods, where possible.

Route No. 183 should be separated from Route No. H19 between Kenton Station and North Harrow, Post Office (in this direction only), during all periods, where possible.

Tenderers submitting bids should bear this requirement in mind when compiling schedules. This requirement will be negotiated with the successful Tenderer for this route to ensure that optimal interworking/separation is delivered within its schedules.

11. CONTROL STRATEGY

Route No. 183 can suffer from the effects of traffic congestion, making some form of route control essential in order to achieve or better the minimum performance standards for this route.

Tenderers should submit proposals on the control strategy they intend to adopt and the type of control they would intend to use by completing the form provided in Section 3: Part 7 of this ITT. The cost of this control should be included within the main Tender price.

Tenderers should also indicate how they intend to facilitate driver changeovers and meal reliefs for this route.

Further information is provided in Section 2.11 of Part A of the Guide for Tenderers.

12. OPERATIONAL CONSIDERATIONS

Tenderers should note the following operating considerations affecting Route No. 183:

- Route No. 183 can suffer from unpredictable delays from in the Harrow, Hendon and Golders Green areas.
- A high level of trading takes place on Sundays in the Golders Green area.

Tenderers should also note the following factors/events which may have an impact on Route No. 183 in the foreseeable future:

- It is anticipated that Cashless Boarding will be extended throughout London at some stage during the lifetime of this contract. **This is expected to lead to significant savings in running and recovery times to bus routes, and, therefore, potential resource (cycle time and PVR) savings are expected. Tenderers are required to identify and submit the level of savings per vehicle that could be achieved by reducing peak vehicle requirement, and/or how reliability targets could be revised when the Scheme is introduced.**

The above factors have been included to assist Tenderers and represents the information currently available to the Corporation. Tenderers should make their own enquiries about events which may impact upon the route and should form their own views about their likely effect upon it.

13. STOPPING ARRANGEMENTS

Buses operating on Route No. 183 must serve all stops on the line of route designated for the route. There are two types of bus stop:

- Compulsory (white stop flag): where all buses must stop.
- Request (red stop flag): where buses are only required to stop if a passenger rings the bell or an intending passenger signals to the driver.

Tenderers should note that there are proposals (subject to consultation) to remove the distinction between compulsory and request stops. If approved, the successful Tenderer will be advised of these changes in detail.

14. TIMING POINTS & MILEAGES

Timing Points

Buses should be timed at the following points:

Route No. 183

Towards Golders Green Station Forecourt

Pinner Love Lane

North Harrow *Post Office*

Harrow Bus Garage

Harrow *Bus Station*

Kenton Station

Kenton Road *Kenton Lane*

Kingsbury Station

Kingsbury *Roe Green*

The Hyde *Red Lion*

West Hendon Broadway *Herbert Road*

Hendon *Quadrant*

Hendon *Bell*

Golders Green Station Forecourt

Towards Pinner, Love Lane

Golders Green Station Forecourt

Hendon *Bell*

Hendon *Quadrant*

West Hendon Broadway *Herbert Road*

The Hyde *Red Lion*

Kingsbury *Roe Green*

Kingsbury Station

Kenton Road *Kenton Lane*

Kenton Station

Harrow *Bus Station*

Harrow Bus Garage

North Harrow *Post Office*

Pinner Love Lane

For the Mondays to Fridays afternoon Schoolday journey from Jews Free School to Golders Green Station Forecourt, timing point 'Kingsbury, Jews Free School' should be used and then timing points as above from Kingsbury Station to Golders Green Station Forecourt.

14. TIMING POINTS & MILEAGES - continued

Mileages for Route No. 183

Pinner, Love Lane to Golders Green Station Forecourt	10.8 miles
Golders Green Station Forecourt to Pinner, Love Lane	10.8 miles
Kingsbury, Jews Free School to Golders Green Station Forecourt	5.6 miles

Tenderers should note that:

- these measurements are believed to be accurate to within 0.5 miles, but no warranty or representation as to accuracy is given;
- out of service stand workings have not been measured and are not included within the above measurements;
- if alternative or additional measurements are used by the Tenderer, these must be stated in the tender submission;
- point to point measurements pertaining to recognised curtailment points or alternative terminals will be agreed with the successful Tenderer once the contract has been awarded.

15. VEHICLE LIVERY

All vehicles to be used on Route No. 183 from the commencement of the new Route Agreement must be in a livery that is exclusively Corporation red. The paint should be matched accurately to the colour as defined by the following manufacturer's specifications:

ICI London Bus Red P498 FPF 3

Other manufacturers should also be able to produce this specification from the ICI colour chart.

This requirement does not include the lower panels which may be in a different colour but which shall not exceed 50cm in height, or the rooftop which should be painted white so as to reduce temperatures inside the vehicle during the summer months.

The positioning and size of Operators' logos are to be agreed between the Operator and the Corporation and, where possible, these should be above the front doors on the nearside of the vehicles and above the drivers' offside cab windows.

All livery proposals must be submitted to the Contracts Tendering Manager for approval.

APPENDIX A: ROUTE RECORD

ROUTE No. 183: GOLDERS GREEN STATION FORECOURT - PINNER, LOVE LANE

STREETS TRAVERSED

Towards Pinner, Love Lane: Golders Green Bus Station Forecourt, North End Road, Finchley Road, Golders Green Road, Brent Street, The Quadrant, Church Road, The Burroughs, Station Road, West Hendon Broadway, The Hyde, Kingsbury Road, Kingsbury Circle, Kenton Road, Shepcote Road, Gayton Road, Station Road, College Road, Headstone Road, Greenhill Way, Pinner Road, Marsh Road, Bridge Street.

Towards Golders Green Station Forecourt: Bridge Street, Marsh Road, Pinner Road, College Road, Headstone Road, Kymberley Road, Harrow Bus Station, College Road, Station Road, Shepcote Road, Kenton Road, Kingsbury Circle, Kingsbury Road, The Hyde, West Hendon Broadway, Herbert Road, Wilberforce Road, Station Road, The Burroughs, Church Road, The Quadrant, Brent Street, Golders Green Road, North End Road, Golders Green Bus Station Forecourt.

School journey from Jews Free School (towards Golders Green Station):

On Mondays to Fridays schooldays afternoons, buses operate from Private road in Jews Free School grounds via The Mall to Kingsbury Circle to join line of routeing.

STANDS, TURNING POINTS AND DESTINATION BLINDS

Tenderers should note that under normal circumstances, the specific restrictions relating to each stand will apply to the whole stand at all times. Any variation to such standing arrangements must be agreed by the Corporation. In addition, Tenderers should note the following general requirements:

- 1) Drivers MUST switch off engines during layover periods at bus stations or on stands.
- 2) No meal reliefs may be taken on any stand (on or off line of route) without the permission of the Corporation.
- 3) No crew ferry vehicles may enter any stand (on or off line of route) without the permission of the Corporation.
- 4) Destination blind displays to be used are shown under each stand description. Tenderers may suggest, within their bids, alternative blind displays.
- 5) The intermediate (also known as via) blind display to be used on the nearside of the vehicle is shown in the box below:

183 via Harrow

For further information, please refer to Annex C of the Framework Agreement: General Conditions relating to the use of London Buses' Bus Stations and Stands.

GOLDERS GREEN STATION FORECOURT, STAND GH

Private stand for 3 buses at stop GB in Golders Green Bus Station on north side of North End Road. When stand is full buses should use overflow stand opposite stops GI and GH. Buses proceed from Golders Green Bus Station Forecourt direct to stand, departing to Golders Green Bus Station Forecourt. Set down and pick up in Golders Green Bus Station Forecourt, at stop GH.

AVAILABILITY: At any time.
OPERATING RESTRICTIONS: No more than **2** vehicles on Route No. 183 should be scheduled to stand at any one time.
MEAL RELIEFS: No meal relief vehicles to stand at any time.
FERRY VEHICLES: No ferry vehicles to park on stand at any time.
OTHER INFORMATION: London Buses toilet facilities available 24 hours a day.
BLIND DISPLAY: Golders Green

HENDON, BELL (from Pinner, Love Lane)

Public stand on east side of slip road connecting Brent Street and Brent Green, commencing 6 metres north of centre of Brent Green and extending 10 metres northward. Buses proceed from Brent Street via Brook Water Lane to stand, departing via Brook Water Lane, Brent Green and Queen's Road to Brent Street. Set down in Brent Street, at stop W and pick up in Brent Street, at stop X.

AVAILABILITY: At any time.
OPERATING RESTRICTIONS: To be used for unscheduled curtailments only.
MEAL RELIEFS: No meal relief vehicles to stand at any time.
FERRY VEHICLES: No ferry vehicles to park on stand at any time.
BLIND DISPLAY: Hendon, Queens Road

WEST HENDON, PERRYFIELD WAY

Public stand on west side of Perryfield Way, commencing 35 metres north of a point opposite the centre of Telford Road and extending 22 metres south.

From Golders Green Station Forecourt

Buses proceed from Station Road via West Hendon Broadway and Perryfield Way to stand, departing via Perryfield Way, West Hendon Broadway, Herbert Road and Wilberforce Road to Station Road. Set down in Station Road, at stop HE and pick up in Station Road, at stop HD.

From Pinner, Love Lane

Buses proceed from West Hendon Broadway via Perryfield Way to stand, departing via Perryfield Way to West Hendon Broadway. Set down in West Hendon Broadway, at stop HC and pick up in West Hendon Broadway, at stop HM.

AVAILABILITY: At any time.
OPERATING RESTRICTIONS: To be used for unscheduled curtailments only.
MEAL RELIEFS: No meal relief vehicles to stand at any time.
FERRY VEHICLES: No ferry vehicles to park on stand at any time.
BLIND DISPLAY: West Hendon

NORTHWICK PARK STATION (from Golders Green Station Forecourt)

Buses proceed from Kenton Road via Rushout Avenue and Northwick Avenue departing to Kenton Road. Set down in Kenton Road, at stop II and pick up in Kenton Road, at stop GG.

AVAILABILITY: At any time.
OPERATING RESTRICTIONS: **Turning Point Only - Buses must not stand.**
BLIND DISPLAY: Northwick Park Station

HARROW BUS STATION

Private stand in Harrow Bus Station.

From Golders Green Station Forecourt

Buses proceed from College Road via Harrow Bus Station to stand, departing via Harrow Bus Station and College Road to Harrow Bus Station. Set down and pick up in Harrow Bus Station, at stop E.

From Pinner, Love Lane

Buses proceed from Harrow Bus Station direct to stand, departing via Harrow Bus Station to College Road. Set down in Harrow Bus Station, at stop E and pick up in College Road, at stop D.

AVAILABILITY: At any time.
OPERATING RESTRICTIONS: To be used for unscheduled curtailments only.
MEAL RELIEFS: No meal relief vehicles to stand at any time.
FERRY VEHICLES: No ferry vehicles to park on stand at any time.
BLIND DISPLAY: Harrow

PINNER, LOVE LANE

Public stand on west side of Bridge Street, commencing at No. 21 and extending 20 metres south.

Buses proceed from Bridge Street direct to stand, departing to Bridge Street. Set down in Bridge Street, at stop Z1 and pick up in Bridge Street, at stop C.

AVAILABILITY: At any time.
OPERATING RESTRICTIONS: No more than **2** vehicles on Route No. 183 should be scheduled to stand at any one time.
MEAL RELIEFS: No meal relief vehicles to stand at any time.
FERRY VEHICLES: No ferry vehicles to park on stand at any time.
OTHER INFORMATION: Toilet facilities available (0630-1700 daily).
BLIND DISPLAY: Pinner

APPENDIX B: SAMPLE RUNNING TIMES FOR ROUTE No. 183
(based on current schedule)

MONDAYS TO FRIDAYS1. Golders Green Station Forecourt to Pinner, Love Lane

	Typical early morning	Longest morning peak	Typical interpeak	Longest afternoon peak	Typical evening	Typical late evening
Golders Green Station Forecourt	0524	0801	1233	1651	2005	2305
Hendon <i>Bell</i>	0529	0809	1241	1700	2011	2310
Hendon <i>Quadrant</i>	0531	0812	1245	1704	2014	2312
West Hendon Broadway <i>Herbert Road</i>	0536	0822	1253	1714	2021	2317
The Hyde <i>Red Lion</i>	0537	0823	1254	1715	2022	2318
Kingsbury <i>Roe Green</i>	0541	0829	1300	1721	2026	2322
Kingsbury Station	0543	0833	1305	1726	2029	2324
Kenton Station	0549	0848	1317	1739	2037	2330
Harrow <i>Bus Station</i>	0554	0856	1324	1747	2042	2335
Harrow Bus Garage	0558	0901	1329	1753	2046	2339
North Harrow <i>Post Office</i>	0559	0903	1330	1755	2047	2340
Pinner Love Lane	0604	0910	1336	1803	2052	2345
	40 minutes	69 minutes	63 minutes	72 minutes	47 minutes	40 minutes

MONDAYS TO FRIDAYS - continued2. Pinner, Love Lane to Golders Green Station

	Typical early morning	Longest morning peak	Typical interpeak	Longest afternoon peak	Typical evening	Typical late evening
Pinner Love Lane	0536	0803	1213	1703	2005	2305
North Harrow <i>Post Office</i>	0540	0811	1219	1710	2009	2309
Harrow Bus Garage	0541	0813	1221	1712	2010	2310
Harrow <i>Bus Station</i>	0545	0820	1226	1717	2014	2314
Kenton Station	0550	0830	1233	1725	2019	2319
Kingsbury Station	0556	0844	1245	1738	2027	2325
Kingsbury <i>Roe Green</i>	0558	0847	1249	1742	2029	2327
The Hyde <i>Red Lion</i>	0602	0855	1256	1749	2034	2331
West Hendon Broadway <i>Herbert Road</i>	0603	0856	1257	1750	2035	2332
Hendon <i>Quadrant</i>	0608	0907	1305	1800	2042	2337
Hendon <i>Bell</i>	0610	0911	1309	1804	2045	2339
Golders Green Station Forecourt	0617	0922	1320	1815	2052	2345
	41 minutes	79 minutes	67 minutes	72 minutes	47 minutes	40 minutes

Service Specification for Route No. 183 - 15/09/2008

SATURDAYS

1. Golders Green Station to Pinner, Love Lane

	Typical early morning	Typical late AM shopping period	Typical PM shopping period	Typical evening	Typical late evening
Golders Green Station Forecourt	0524	1037	1509	2005	2305
Hendon <i>Bell</i>	0529	1045	1517	2011	2310
Hendon <i>Quadrant</i>	0531	1048	1521	2014	2312
West Hendon Broadway <i>Herbert Road</i>	0536	1055	1529	2021	2317
The Hyde <i>Red Lion</i>	0537	1056	1530	2022	2318
Kingsbury <i>Roe Green</i>	0541	1102	1536	2026	2322
Kingsbury Station	0543	1105	1541	2029	2324
Kenton Station	0549	1117	1553	2037	2330
Harrow <i>Bus Station</i>	0554	1124	1601	2042	2335
Harrow Bus Garage	0558	1129	1606	2046	2339
North Harrow <i>Post Office</i>	0559	1130	1607	2047	2340
Pinner Love Lane	0604	1136	1613	2052	2345
	40 minutes	59 minutes	64 minutes	47 minutes	40 minutes

2. Pinner, Love Lane to Golders Green Station

	Typical early morning	Typical late AM shopping period	Typical PM shopping period	Typical evening	Typical late evening
Pinner Love Lane	0536	1027	1501	2005	2305
North Harrow <i>Post Office</i>	0540	1033	1507	2009	2309
Harrow Bus Garage	0541	1035	1509	2010	2310
Harrow <i>Bus Station</i>	0545	1040	1514	2014	2314
Kenton Station	0550	1047	1522	2019	2319
Kingsbury Station	0556	1058	1533	2027	2325
Kingsbury <i>Roe Green</i>	0558	1101	1537	2029	2327
The Hyde <i>Red Lion</i>	0602	1108	1544	2034	2331
West Hendon Broadway <i>Herbert Road</i>	0603	1109	1545	2035	2332
Hendon <i>Quadrant</i>	0608	1117	1553	2042	2337
Hendon <i>Bell</i>	0610	1121	1557	2045	2339
Golders Green Station Forecourt	0616	1130	1608	2052	2345
	40 minutes	63 minutes	67 minutes	47 minutes	40 minutes

SUNDAYS

1. Golders Green Station Forecourt to Pinner, Love Lane

	Typical early morning	Typical late AM shopping period	Typical PM shopping period	Typical evening	Typical late evening
Golders Green Station Forecourt	0609	1038	1505	2005	2305
Hendon <i>Bell</i>	0614	1044	1513	2011	2310
Hendon <i>Quadrant</i>	0616	1047	1517	2014	2312
West Hendon Broadway <i>Herbert Road</i>	0621	1054	1525	2021	2317
The Hyde <i>Red Lion</i>	0622	1055	1526	2022	2318
Kingsbury <i>Roe Green</i>	0626	1101	1532	2026	2322
Kingsbury Station	0628	1104	1536	2029	2324
Kenton Station	0634	1113	1546	2037	2330
Harrow <i>Bus Station</i>	0639	1119	1552	2042	2335
Harrow Bus Garage	0643	1124	1557	2046	2339
North Harrow <i>Post Office</i>	0644	1125	1558	2047	2340
Pinner <i>Love Lane</i>	0649	1131	1604	2052	2345
	40 minutes	53 minutes	59 minutes	47 minutes	40 minutes

SUNDAYS - continued

2. Pinner, Love Lane to Golders Green Station Forecourt

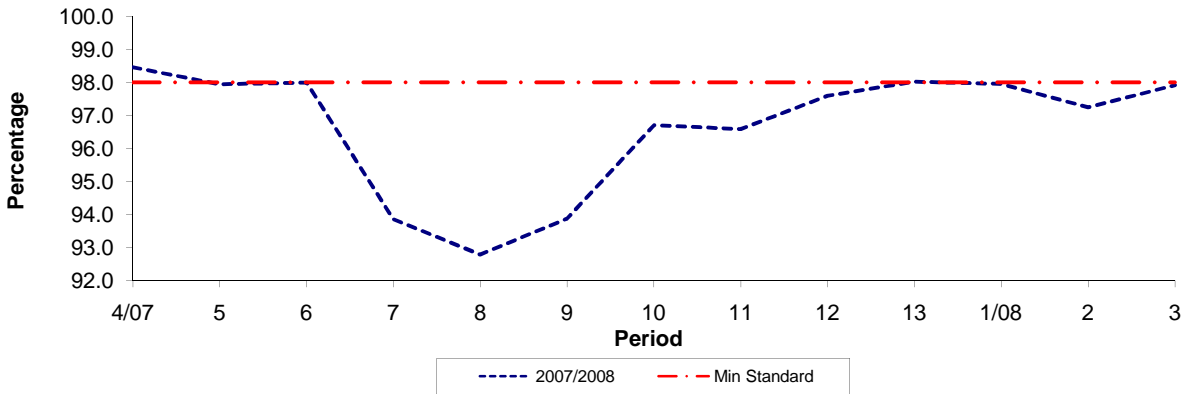
	Typical early morning	Typical late AM shopping period	Typical PM shopping period	Typical evening	Typical late evening
Pinner Love Lane	0611	1038	1505	2005	2305
North Harrow Post Office	0615	1043	1510	2009	2309
Harrow Bus Garage	0616	1044	1511	2010	2310
Harrow Bus Station	0620	1049	1516	2014	2314
Kenton Station	0625	1055	1523	2019	2319
Kingsbury Station	0631	1103	1532	2027	2325
Kingsbury Roe Green	0633	1106	1536	2029	2327
The Hyde Red Lion	0637	1112	1542	2034	2331
West Hendon Broadway Herbert Road	0638	1113	1543	2035	2332
Hendon Quadrant	0643	1120	1551	2042	2337
Hendon Bell	0645	1123	1555	2045	2339
Golders Green Station Forecourt	0651	1131	1605	2052	2345
	40 minutes	53 minutes	60 minutes	47 minutes	40 minutes

The above tables have been included to assist Tenderers. They represent the information currently available to the Corporation. Tenderers should form their own views about what is appropriate in terms of running times. (See Section 8.)

PART B - PERFORMANCE STATISTICS

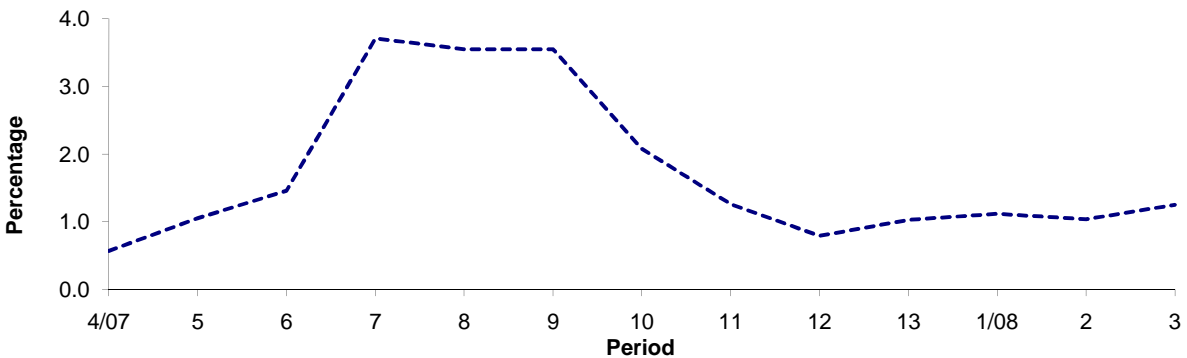
Route 183

Mileage Operated



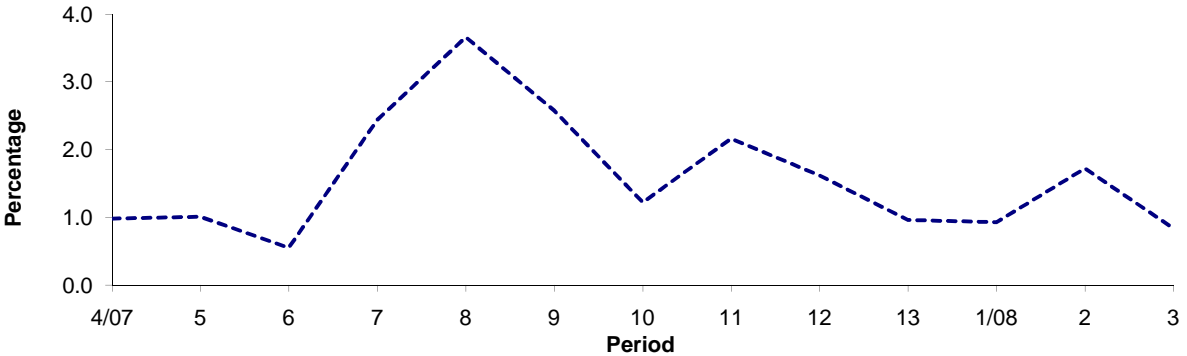
Period	4/07	5	6	7	8	9	10	11	12	13	1/08	2	3
2007/2008	98.45	97.94	97.99	93.85	92.79	93.87	96.70	96.58	97.59	98.01	97.95	97.24	97.91
Min Standard	98.00	98.00	98.00	98.00	98.00	98.00	98.00	98.00	98.00	98.00	98.00	98.00	98.00

Deductible Mileage



Period	4/07	5	6	7	8	9	10	11	12	13	1/08	2	3
2007/2008	0.57	1.05	1.46	3.71	3.55	3.55	2.08	1.26	0.79	1.03	1.12	1.04	1.25

Non Deductible Mileage

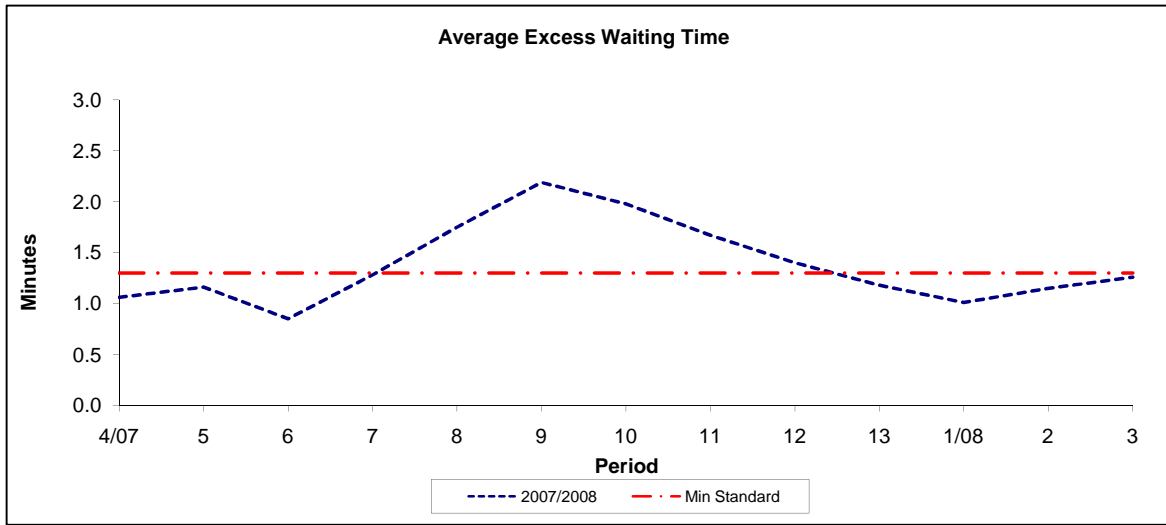


Period	4/07	5	6	7	8	9	10	11	12	13	1/08	2	3
2007/2008	0.98	1.01	0.55	2.44	3.66	2.58	1.22	2.16	1.62	0.96	0.93	1.72	0.84

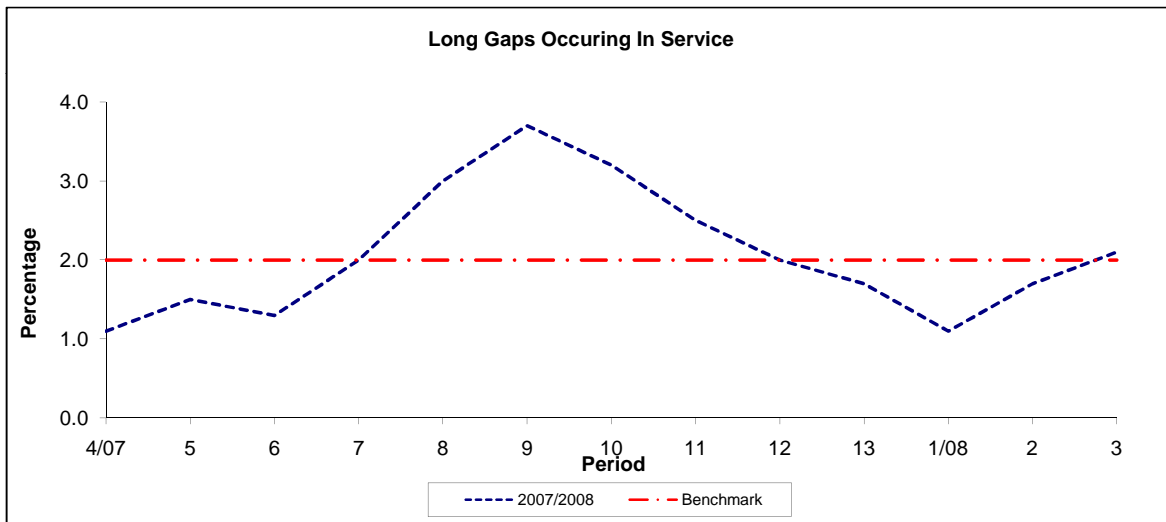
Note : Mileage is based on 4 weeks data

PART B - PERFORMANCE STATISTICS

Route 183



Period	4/07	5	6	7	8	9	10	11	12	13	1/08	2	3
2007/2008	1.06	1.16	0.85	1.28	1.75	2.19	1.98	1.67	1.40	1.18	1.01	1.15	1.26
Min Standard	1.30	1.30	1.30	1.30	1.30	1.30	1.30	1.30	1.30	1.30	1.30	1.30	1.30



Period	4/07	5	6	7	8	9	10	11	12	13	1/08	2	3
2007/2008	1.10	1.50	1.30	2.00	3.00	3.70	3.20	2.50	2.00	1.70	1.10	1.70	2.10
Benchmark	2.00	2.00	2.00	2.00	2.00	2.00	2.00	2.00	2.00	2.00	2.00	2.00	2.00

Note : Reliability is based on 12 weeks rolling data