

SECTION 2: PART A

SERVICE SPECIFICATION FOR ROUTE No. 48

CONTENTS

| | Page |
|--|------|
| 1. Tenders Required | 2 |
| 2. Proposed Changes | 2 |
| 3. Terminals | 2 |
| 4. Days of Operation | 2 |
| 5. Vehicle Type | 3 |
| 6. Frequencies | 4 |
| 7. Minimum Performance Standards | 9 |
| 8. Running Times | 10 |
| 9. Layovers | 10 |
| 10. Timing Constraints | 10 |
| 11. Control Strategy | 11 |
| 12. Operational Considerations | 11 |
| 13. Stopping Arrangements | 12 |
| 14. Timing Points and Mileages | 12 |
| 15. Vehicle Livery | 12 |
| <u>Appendices</u> | |
| A. Route Record | 13 |
| B. Sample Running Times for Route No. 48 | 17 |

This document should be read in conjunction with the Corporation's Guide for Tenderers (Part A: Explanatory Notes - Service Requirements). Where appropriate, reference is made to the relevant section.

1. TENDERS REQUIRED

This document describes the service for which the Corporation requires Tenders and Tenderers **must** submit a fully compliant bid. In addition, Tenderers **may** wish to draw upon their local knowledge to submit alternative bids which offer improved value for money in meeting passenger needs. These might incorporate, for example, different timings, frequencies, route structures and / or vehicles. The Corporation will welcome such bids and give them careful consideration.

For more information, please refer to Section 2.1 of Part A of the Guide for Tenderers.

2. PROPOSED CHANGES

At this time, the Corporation expects to implement a change to the existing service prior to the commencement of the new Route Agreement for Route No. 48:

- From 8th December 2008, temporary stopping and standing arrangements were implemented for Route No. 48 at London Bridge Bus Station due to building work. Buses are setting down at stop BP2618 (stop D) and standing at stand D. No change to pick up stop (at stop F). Temporary stopping and standing arrangements are expected to be in operation until December 2009, and are unlikely to affect the new contract.

Tenderers should note that the following alterations (subject to consultation) are proposed as part of this Service Specification for introduction with the new Route Agreement:

- First departure ex Walthamstow Central Station at 0521 on Saturdays and Sundays is re-timed to 0515 to be consistent with Mondays to Fridays.

3. TERMINALS

Route No. 48 will operate between Walthamstow Central Station and London Bridge Bus Station, Bay F.

Full details of the route to be followed, the permitted terminal workings and the available stands are shown at Appendix A. Tenderers should particularly note the information relating to the shared usage of stands, the taking of meal reliefs and the use of ferry vehicles.

4. DAYS OF OPERATION

One timetable must be offered for Route No. 48 which will operate as follows:

| DAY OF OPERATION | |
|-------------------------|----------------|
| Mondays to Fridays | Section 6.1 |
| Saturdays & Good Friday | Section 6.2 |
| Sundays | Section 6.3 |
| Christmas Day | No service |
| Boxing Day | Section 6.4 |
| Other Public Holidays | Sunday service |

5. VEHICLE TYPE

Please refer to Section 2.5 of Part A of the Guide for Tenderers.

Route No. 48 is currently approved for vehicles which are a maximum of 10.5 metres long and 2.55 metres wide. A formal route test will be required for vehicles which exceed these dimensions. This will be arranged with the successful Tenderer.

The service requirement set out in Section 6 assumes that dual door, double deck buses with a minimum capacity of 87, of which approximately 60 should be seated, will be used on this route. Luggage space should also be provided.

Tenderers must submit proposals based on new vehicles. These must be of a low floor design and be accessible to wheelchairs by means of a powered ramp.

Bids for both conventional diesel powered vehicles and diesel-electric hybrid vehicles should be submitted and separate prices for both types are required.

Bids based on a mix of hybrid and conventional vehicles would be welcomed, subject to a minimum of 10 hybrid powered vehicles being offered for this route (full hybrid operation should be offered for routes with a vehicle requirement of less than 10).

Tenderers should refer to the vehicle design (including accessibility) features contained in Schedule II to Annex B of the Framework Agreement and Section 2 Part B of the Master ITT (Version 2 issued June 2005).

Tenderers may also submit bids based on using existing vehicles. Tenderers are asked to specify what refurbishment would be carried out on existing buses and the expected timescale of those works. See Master ITT (Version 2 issued June 2005).

6. FREQUENCIES

The level of service (e.g. every 15 minutes) required by the Corporation is described in terms of the interval between departures. Whilst a completely regular service at the specified frequency should be possible at most times, occasionally a bus may be timetabled to depart up to five minutes earlier or later than the regular time.

Tenderers should note that when the specified frequency changes (e.g. between the peak and midday periods), the scheduled interval between buses should never be greater than that provided by the lower of the two frequencies **AT ANY POINT ON THE ROUTE**.

Tenderers should note that unless otherwise stated **all** journeys should operate between the terminal points defined in each direction.

6.1 Mondays to Fridays

1. Walthamstow Central Station to London Bridge Bus Station, Bay F

| | |
|-------------|-------------------------------------|
| 0510 - 0605 | Every 12 minutes |
| 0606 - 0635 | Every 10 minutes |
| 0636 - 1830 | Every 7½ minutes (8 buses per hour) |
| 1831 - 1930 | Every 10 minutes |
| 1931 - 0030 | Every 12 minutes |

First departure from Walthamstow Central Station no later than 0515.
Last departure from Walthamstow Central Station no earlier than 0025.

Tenderers should ensure that buses are scheduled to be no more than 7½ minutes apart at Shoreditch Church between 0715 and 0915 and between 1500 and 1630.

2. London Bridge Bus Station, Bay F to Walthamstow Central Station

| | |
|-------------|-------------------------------------|
| 0545 - 0625 | Every 12 minutes |
| 0626 - 0655 | Every 10 minutes |
| 0656 - 1905 | Every 7½ minutes (8 buses per hour) |
| 1906 - 2005 | Every 10 minutes |
| 2006 - 0105 | Every 12 minutes |

First departure from London Bridge Bus Station, Bay F no later than 0550.
Last departure from London Bridge Bus Station, Bay F no earlier than 0100.

Tenderers should ensure that buses are scheduled to be no more than 10 minutes apart at Leyton, Lea Bridge Road/Markhouse Road between 0700 and 0740 and no more than 7½ minutes apart between 0741 and 0855.

6.2 Saturdays & Good Friday

1. Walthamstow Central Station to London Bridge Bus Station, Bay F

| | |
|-------------|-------------------------------------|
| 0510 - 0615 | Every 15 minutes |
| 0616 - 0850 | Every 12 minutes |
| 0851 - 0930 | Every 10 minutes |
| 0931 - 1730 | Every 7½ minutes (8 buses per hour) |
| 1731 - 1830 | Every 10 minutes |
| 1831 - 0030 | Every 12 minutes |

First departure from Walthamstow Central Station no later than 0515.
Last departure from Walthamstow Central Station no earlier than 0025.

Tenderers should ensure that buses are scheduled to be no more than 10 minutes apart at Shoreditch Church between 0920 and 1000 and no more than 7½ minutes apart between 1001 and 1100.

2. London Bridge Bus Station, Bay F to Walthamstow Central Station

| | |
|-------------|-------------------------------------|
| 0545 - 0705 | Every 15 minutes |
| 0706 - 0805 | Every 12 minutes |
| 0806 - 0925 | Every 10 minutes |
| 0926 - 1805 | Every 7½ minutes (8 buses per hour) |
| 1806 - 1905 | Every 10 minutes |
| 1906 - 0105 | Every 12 minutes |

First departure from London Bridge Bus Station, Bay F no later than 0550.
Last departure from London Bridge Bus Station, Bay F no earlier than 0100.

Tenderers should ensure that buses are scheduled to be no more than 10 minutes apart at Leyton, Lea Bridge Road/Markhouse Road between 0920 and 1000 and no more than 7½ minutes apart between 1000 and 1100.

6.3 Sundays

1. Walthamstow Central Station to London Bridge Bus Station, Bay F

0510 - 0745 Every 15 minutes
0746 - 0030 Every 12 minutes

First departure from Walthamstow Central Station no later than 0515.
Last departure from Walthamstow Central Station no earlier than 0025.

Tenderers should ensure that buses are scheduled to be no more than 12 minutes apart at Shoreditch Church between 1030 and 1130.

2. London Bridge Bus Station, Bay F to Walthamstow Central Station

0545 - 0805 Every 15 minutes
0806 - 0105 Every 12 minutes

First departure from London Bridge Bus Station, Bay F no later than 0550.
Last departure from London Bridge Bus Station, Bay F no earlier than 0100.

Tenderers should ensure that buses are scheduled to be no more than 12 minutes apart at Leyton, Lea Bridge Road/Markhouse Road between 1030 and 1130.

6.4 Boxing Day

1. Walthamstow Central Station to London Bridge Bus Station, Bay F

0815 - 0030 Every 12 minutes

First departure from Walthamstow Central Station no later than 0820.
Last departure from Walthamstow Central Station no earlier than 0025.

Tenderers should ensure that buses are scheduled to be no more than 12 minutes apart at Shoreditch Church between 1030 and 1130.

2. London Bridge Bus Station, Bay F to Walthamstow Central Station

0805 - 0105 Every 12 minutes

First departure from London Bridge Bus Station, Bay F no later than 0810.
Last departure from London Bridge Bus Station, Bay F no earlier than 0100.

Tenderers should ensure that buses are scheduled to be no more than 12 minutes apart at Leyton, Lea Bridge Road/Markhouse Road between 1030 and 1130.

7. MINIMUM PERFORMANCE STANDARDS

Please refer to Section 2.7 of Part A of the Guide for Tenderers.

Tenderers should note that the objective of the Operator of Route No. 48 shall be to operate all scheduled mileage and adhere **fully** to the published timetable. The Operator must use its best endeavours to achieve this.

The **minimum** standards of acceptable performance for Route No. 48 shall be:

| | |
|---------------------------|---------------------------|
| Average Excess Wait Time: | No more than 1.30 minutes |
| Minimum Operated Mileage: | No less than 98.00% |

or as notified by the Corporation from time to time. The Operator will be required to achieve or better the standards.

QSI Thresholds

The QSI threshold is the standard of performance to be achieved by the operator in order to qualify for an automatic contract extension (in accordance with Schedule IX of the Framework Agreement).

Average Excess Wait Time Threshold = 1.15 minutes

Summary of proposed QSI coverage: Route No. 48

Note: While London Buses undertakes to carry out QSI surveys at the times and locations specified below, it may prove impossible to rearrange a survey cancelled or nullified at short notice.

Survey locations

Towards London Bridge Bus Station, Bay F

Walthamstow Central
Clapton Pond
Shoreditch \$

Towards Walthamstow Central Station

London Bridge
Shoreditch \$
Hackney Central

Total scheduled manual QSI surveys per quarter = 96.

\$ - Observed simultaneously in both directions. Counted as two surveys.

8. RUNNING TIMES

Extracts from the public timetable with sample running times for Route No. 48 are attached at Appendix B. This gives an indication of the time required to travel the route. Attention is drawn to the variations in running times at different times of the day. Please refer to Section 2.8 of Part A of the Guide for Tenderers for further information.

Tenderers should carefully check the existing running times to ensure that they are appropriate in present traffic conditions. Tenderers should particularly check the existing running times for the Mondays to Fridays PM peak and the early evening, Saturday afternoon shopping period and the Sunday shopping period.

It is expected that any changes to these running times can be accommodated within existing cycle times.

When reviewing existing, and devising new, running times Tenderers should refer to:

- the minimum performance standards for Route No. 48 in Section 7 above;
- the historical performance data provided in Section 1 Part B of the introduction to this ITT;
- the paragraph in Section 12 referring to the proposed extension of the Cashless Boarding zone throughout the whole of the London area.

Tenderers may consider if school summer holiday schedules, incorporating running time reductions, are desirable for this route. In this event, schedules and costs must be submitted separately.

9. LAYOVERS

Under normal circumstances, layover time on stands and at bus stations should be restricted to that required to provide a reliable service. Longer layovers for any other purpose may only be taken with the permission of the Corporation.

10. TIMING CONSTRAINTS

Route No. 48 should interwork with Route No. 26 between Cambridge Heath Station and Liverpool Street, Bishopsgate during the Mondays to Fridays peaks and all evenings.

Route No. 48 should be separated from Route No. N26 between Cambridge Heath Station and Liverpool Street, Bishopsgate, where possible.

Tenderers submitting bids should bear this requirement in mind when compiling schedules. This requirement will be negotiated with the successful Tenderer for this route to ensure that optimal interworking/separation is delivered within its schedules.

11. CONTROL STRATEGY

Route No. 48 can suffer from the effects of traffic congestion, making some form of route control essential in order to achieve or better the minimum performance standards for this route.

Tenderers should submit proposals on the control strategy they intend to adopt and the type of control they would intend to use by completing the form provided in Section 3: Part 7 of this ITT. The cost of this control should be included within the main Tender price.

Tenderers should also indicate how they intend to facilitate driver changeovers and meal reliefs for this route.

Further information is provided in Section 2.11 of Part A of the Guide for Tenderers.

12. OPERATIONAL CONSIDERATIONS

Tenderers should note the following operating considerations affecting Route No. 48:

- Route No. 48 can suffer from unpredictable traffic delays in the City of London area on Monday to Fridays, particularly during peak periods.

Tenderers should also note the following factors/events which may have an impact on Route No. 48 in the foreseeable future:

- Proposals exist for large scale office development in the Bishopsgate area.
- The ongoing Thames Water main replacement works programme in central London will continue to affect these and other bus routes.
- The East London Line Extension may affect demand on Route No. 48. The East London Line will be extended in two phases. Phase One will extend the East London Line north to Dalston Junction and south to New Cross, Crystal Palace and West Croydon. A further extension to Highbury & Islington from Dalston Junction will open by February 2011. The expected opening for the East London Line is summer 2010.
- The construction of the new East London line station in Shoreditch High Street may cause delays to the service.
- It is anticipated that Cashless Boarding will be extended throughout London at some stage during the lifetime of this contract. **This is expected to lead to significant savings in running and recovery times to bus routes, and, therefore, potential resource (cycle time and PVR) savings are expected. Tenderers are required to identify and submit the level of savings per vehicle that could be achieved by reducing peak vehicle requirement, and/or how reliability targets could be revised when the Scheme is introduced.**

The above factors have been included to assist Tenderers and represents the information currently available to the Corporation. Tenderers should make their own enquiries about events which may impact upon the route and should form their own views about their likely effect upon it.

13. STOPPING ARRANGEMENTS

Buses operating on Route No. 48 must serve all stops on the line of route designated for the route.

14. TIMING POINTS & MILEAGES

Timing Points

The required timing points (and codes) are shown in Caesar.

Mileages for Route No. 48

| | |
|---|-----------|
| Walthamstow Central Station to London Bridge Bus Station, Bay F | 7.6 miles |
| London Bridge Bus Station, Bay F to Walthamstow Central Station | 8.0 miles |

Tenderers should note that:

- these measurements are believed to be accurate to within 0.5 miles, but no warranty or representation as to accuracy is given;
- out of service stand workings have not been measured and are not included within the above measurements;
- if alternative or additional measurements are used by the Tenderer, these must be stated in the tender submission;
- point to point measurements pertaining to recognised curtailment points or alternative terminals will be agreed with the successful Tenderer once the contract has been awarded.

15. VEHICLE LIVERY

All vehicles to be used on Route No. 48 from the commencement of the new Route Agreement must be in a livery that is exclusively Corporation red. The paint should be matched accurately to the colour as defined by the following manufacturer's specifications:

ICI London Bus Red P498 FPF 3

Other manufacturers should also be able to produce this specification from the ICI colour chart.

This requirement does not include the lower panels which may be in a different colour but which shall not exceed 50cm in height, or the rooftop which should be painted white so as to reduce temperatures inside the vehicle during the summer months.

The positioning and size of Operators' logos are to be agreed between the Operator and the Corporation and, where possible, these should be above the front doors on the nearside of the vehicles and above the drivers' offside cab windows.

All livery proposals must be submitted to the Contracts Tendering Manager for approval.

APPENDIX A: ROUTE RECORD

ROUTE No. 48: WALTHAMSTOW CENTRAL STATION - LONDON BRIDGE BUS STATION, BAY F

STREETS TRAVERSED

Towards London Bridge Bus Station, Bay F: Walthamstow Central Bus Station, Selborne Road, Hoe Street, Lea Bridge Road, Kenninghall Road roundabout, Lower Clapton Road, Mare Street, Cambridge Heath Road, Hackney Road, Shoreditch High Street, Norton Folgate, Bishopsgate, Gracechurch Street, King William Street, London Bridge, Borough High Street, Railway Approach, London Bridge Bus Station, Bay F.

Towards Walthamstow Central Station: London Bridge Bus Station, Bay F, London Bridge Street, Borough High Street, London Bridge, King William Street, Gracechurch Street, Bishopsgate, Norton Folgate, Shoreditch High Street, Hackney Road, Cambridge Heath Road, Mare Street, Amhurst Road, Dalston Lane, Lower Clapton Road, Kenninghall Road roundabout, Lea Bridge Road, Hoe Street, Selborne Road, Walthamstow Central Bus Station.

STANDS, TURNING POINTS AND DESTINATION BLINDS

Tenderers should note that under normal circumstances, the specific restrictions relating to each stand will apply to the whole stand at all times. Any variation to such standing arrangements must be agreed by the Corporation. In addition, Tenderers should note the following general requirements:

- 1) Drivers MUST switch off engines during layover periods at bus stations or on stands.
- 2) No meal reliefs may be taken on any stand (on or off line of route) without the permission of the Corporation.
- 3) No crew ferry vehicles may enter any stand (on or off line of route) without the permission of the Corporation.
- 4) Destination blind displays to be used are shown under each stand description. Tenderers may suggest, within their bids, alternative blind displays.
- 5) The intermediate (also known as via) blind display to be used on the nearside of the vehicle is shown in the box below:

| |
|-------------------------|
| 48 via Liverpool Street |
|-------------------------|

For further information, please refer to Annex C of the Framework Agreement: General Conditions relating to the use of London Buses' Bus Stations and Stands.

WALTHAMSTOW CENTRAL STATION

Private stand for 13 buses in marked bays on east side of Walthamstow Central Bus Station on north side of Selborne Road. Overflow offside stand for 1 bus on west side of bus station in lay-by opposite stop A.

Buses proceed from Walthamstow Central Bus Station direct to stand, departing to Walthamstow Central Bus Station. Set down in Walthamstow Central Bus Station, at alighting point and pick up in Walthamstow Central Bus Station, at stop C.

| | |
|-------------------------|--|
| AVAILABILITY: | At any time. |
| OPERATING RESTRICTIONS: | No more than 2 vehicles on Route No. 48 should be scheduled to stand at any one time. |
| MEAL RELIEFS: | No meal relief vehicles to stand at any time. |
| FERRY VEHICLES: | No ferry vehicles to park on stand at any time. |
| OTHER INFORMATION: | Toilet facilities available 24 hours a day. |
| BLIND DISPLAY: | Walthamstow Central |

LEYTON, BAKERS ARMS (from London Bridge Station)

Buses proceed from Lea Bridge Road via Bromley Road, Capworth Street and High Road Leyton departing to Lea Bridge Road. Set down in Lea Bridge Road, at stop EC and pick up in Lea Bridge Road, at stop WH.

| | |
|-------------------------|---|
| AVAILABILITY: | At any time. |
| OPERATING RESTRICTIONS: | Turning Point Only - Buses must not stand. |
| BLIND DISPLAY: | Leyton, Bakers Arms |

CLAPTON POND, LOWER CLAPTON ROAD (from London Bridge Station)

Public stand on west side of Lower Clapton Road, commencing 20 metres south of the roundabout at Kenninghall Road and extending 20 metres south.

Buses proceed from Lower Clapton Road direct to stand, departing via Lower Clapton Road and Kenninghall Road roundabout to Lower Clapton Road. Set down in Lower Clapton Road, at stop L and pick up in Lower Clapton Road, at stop E.

| | |
|-------------------------|--|
| AVAILABILITY: | To be used before 0700 and after 1900 on Mondays to Saturdays and at any time on Sundays. Buses on Route No. 48 must not use this stand outside these times. |
| OPERATING RESTRICTIONS: | To be used for unscheduled curtailments only. |
| MEAL RELIEFS: | No meal relief vehicles to stand at any time. |
| FERRY VEHICLES: | No ferry vehicles to park on stand at any time. |
| BLIND DISPLAY: | Clapton Pond |

CLAPTON POND (from London Bridge Station)

Public stand in 2 portions on north and east sides of Clapton Pond.

1. For 4 buses on the west side of Lower Clapton Road (eastern arm) commencing at a point 10 metres south of Newick Road and extending 48 metres south.
2. For 1 bus on the south side of Newick Road, between the two arms of Lower Clapton Road, commencing at a point 12 metres east of Lower Clapton Road and extending 19 metres east.

Buses proceed from Lower Clapton Road via Kenninghall Road roundabout and Lower Clapton Road to stand, departing to Lower Clapton Road. Set down in Lower Clapton Road, at stop L and pick up in Lower Clapton Road, at stop G.

| | |
|-------------------------|--|
| AVAILABILITY: | Available until 1900 on Mondays to Saturdays. |
| OPERATING RESTRICTIONS: | To be used for unscheduled curtailments only. If the stand is full, buses should proceed to the overflow stand south of Kenninghall Road roundabout (see above). |
| MEAL RELIEFS: | No meal relief vehicles to stand at any time. |
| FERRY VEHICLES: | No ferry vehicles to park on stand at any time. |
| BLIND DISPLAY: | Clapton Pond |

SHOREDITCH, CURTAIN ROAD

Public stand for 1 bus on west side of Curtain Road, opposite Nos. 110/112.

From Walthamstow Central Station

Buses proceed from Shoreditch High Street via Great Eastern Street and Curtain Road to stand, departing via Curtain Road and Old Street to Hackney Road. Set down in Shoreditch High Street, at stop L and pick up in Hackney Road, at stop R.

From London Bridge Bus Station, Bay F

Buses proceed from Shoreditch High Street via Great Eastern Street and Curtain Road to stand, departing via Curtain Road and Old Street to Shoreditch High Street. Set down in Shoreditch High Street, at stop F and pick up in Shoreditch High Street, at stop N.

| | |
|-------------------------|---|
| AVAILABILITY: | At any time. |
| OPERATING RESTRICTIONS: | To be used for unscheduled curtailments only. |
| MEAL RELIEFS: | No meal relief vehicles to stand at any time. |
| FERRY VEHICLES: | No ferry vehicles to park on stand at any time. |
| BLIND DISPLAY: | Shoreditch |

LIVERPOOL STREET STATION, BISHOPSGATE (from Walthamstow Central Station)

Buses proceed from Bishopsgate departing via Wormwood Street, Old Broad Street, Liverpool Street, Blomfield Street, London Wall and Wormwood Street to Bishopsgate. Set down in Bishopsgate, at stop K and pick up in Bishopsgate, at stop F.

| | |
|-------------------------|---|
| AVAILABILITY: | At any time. |
| OPERATING RESTRICTIONS: | Turning Point Only - Buses must not stand. |
| BLIND DISPLAY: | Liverpool Street |

LONDON BRIDGE BUS STATION, STAND F

Private stand for up to 7 buses in Bay F on London Bridge Station forecourt.

Buses proceed from London Bridge Bus Station, Bay F direct to stand, departing to London Bridge Bus Station, Bay F. Set down in London Bridge Bus Station, Bay F, at stop F and pick up in London Bridge Bus Station, Bay F, at stop F.

| | |
|-------------------------|--|
| AVAILABILITY: | At any time. |
| OPERATING RESTRICTIONS: | No more than 2 vehicles on Route No. 48 should be scheduled to stand at any one time. |
| MEAL RELIEFS: | No meal relief vehicles to stand at any time. |
| FERRY VEHICLES: | No ferry vehicles to park on stand at any time. |
| OTHER INFORMATION: | Network Rail automated toilet facilities available. Mondays to Fridays: 0500-0100, Saturdays: 0630-0100 and Sundays 0700-0100. |
| BLIND DISPLAY: | London Bridge |

APPENDIX B: SAMPLE RUNNING TIMES FOR ROUTE No. 48

(based on current schedule)

MONDAYS TO FRIDAYS1. Walthamstow Central Station to London Bridge Bus Station, Bay F

| | Typical early morning | Longest morning peak | Typical interpeak | Longest afternoon peak | Typical early evening | Typical late evening |
|--------------------------------------|-----------------------------|----------------------------|----------------------|------------------------------|-----------------------------|----------------------------|
| Walthamstow Central Station | 0516 | 0817 | 1219 | 1711 | 2011 | 2301 |
| <i>Leyton Bakers Arms, Lea</i> | | | | | | |
| <i>Bridge Road, West of Junction</i> | 0521 | 0826 | 1228 | 1720 | 2017 | 2306 |
| <i>Leyton Lea Bridge</i> | | | | | | |
| <i>Road/Markhouse Road</i> | 0523 | 0832 | 1232 | 1724 | 2020 | 2309 |
| <i>Clapton Kenninghall</i> | | | | | | |
| <i>Road/Thistlewaite Road</i> | 0528 | 0841 | 1239 | 1731 | 2026 | 2315 |
| <i>Hackney Central Station Mare</i> | | | | | | |
| <i>Street</i> | 0533 | 0849 | 1246 | 1739 | 2033 | 2321 |
| <i>Cambridge Heath Station</i> | 0540 | 0857 | 1255 | 1747 | 2041 | 2328 |
| <i>Shoreditch Church</i> | 0544 | 0904 | 1302 | 1754 | 2047 | 2333 |
| <i>Liverpool Street Bishopsgate</i> | 0549 | 0909 | 1307 | 1759 | 2052 | 2338 |
| London Bridge Bus Station | | | | | | |
| <i>Bay F</i> | 0555 | 0919 | 1317 | 1810 | 2100 | 2344 |
| | 39 minutes | 62 minutes | 58 minutes | 59 minutes | 49 minutes | 43 minutes |

2. London Bridge Bus Station, Bay F to Walthamstow Central Station

| | Typical early morning | Longest morning peak | Typical interpeak | Longest afternoon peak | Typical early evening | Typical late evening |
|--------------------------------------|-----------------------------|----------------------------|----------------------|------------------------------|-----------------------------|----------------------------|
| London Bridge Bus Station | | | | | | |
| <i>Bay F</i> | 0550 | 0810 | 1209 | 1708 | 2010 | 2313 |
| <i>Liverpool Street Bishopsgate</i> | 0556 | 0820 | 1218 | 1717 | 2018 | 2321 |
| <i>Shoreditch Church</i> | 0601 | 0825 | 1224 | 1723 | 2024 | 2326 |
| <i>Cambridge Heath Station</i> | 0605 | 0831 | 1231 | 1731 | 2030 | 2331 |
| <i>Hackney Central Station</i> | | | | | | |
| <i>Amhurst Road</i> | 0611 | 0840 | 1240 | 1740 | 2037 | 2337 |
| <i>Clapton Kenninghall</i> | | | | | | |
| <i>Road/Thistlewaite Road</i> | 0616 | 0849 | 1249 | 1751 | 2044 | 2342 |
| <i>Leyton Lea Bridge</i> | | | | | | |
| <i>Road/Markhouse Road</i> | 0622 | 0856 | 1256 | 1800 | 2050 | 2348 |
| <i>Leyton Bakers Arms, Lea</i> | | | | | | |
| <i>Bridge Road, West of Junction</i> | 0624 | 0900 | 1301 | 1805 | 2053 | 2350 |
| Walthamstow Central Station | 0630 | 0907 | 1308 | 1812 | 2059 | 2355 |
| | 40 minutes | 57 minutes | 59 minutes | 64 minutes | 49 minutes | 42 minutes |

SATURDAYS1. Walthamstow Central Station to London Bridge Bus Station, Bay F

| | Typical early morning | Typical late AM shopping period | Typical PM shopping period | Typical early evening | Typical late evening |
|--|-----------------------------|--|-------------------------------------|-----------------------------|----------------------------|
| Walthamstow Central Station | 0521 | 1032 | 1502 | 2012 | 2313 |
| <i>Leyton Bakers Arms, Lea Bridge Road, West of Junction</i> | 0526 | 1042 | 1512 | 2018 | 2318 |
| <i>Leyton Lea Bridge Road/Markhouse Road</i> | 0528 | 1045 | 1515 | 2021 | 2321 |
| <i>Clapton Kenninghall Road/Thistlewaite Road</i> | 0533 | 1052 | 1522 | 2027 | 2327 |
| <i>Hackney Central Station Mare Street</i> | 0538 | 1058 | 1528 | 2033 | 2333 |
| <i>Cambridge Heath Station</i> | 0545 | 1106 | 1536 | 2040 | 2340 |
| <i>Shoreditch Church</i> | 0549 | 1111 | 1541 | 2045 | 2345 |
| <i>Liverpool Street Bishopsgate</i> | 0554 | 1116 | 1546 | 2050 | 2350 |
| London Bridge Bus Station Bay F | 0600 | 1124 | 1554 | 2057 | 2356 |
| | 39 minutes | 52 minutes | 52 minutes | 45 minutes | 43 minutes |

2. London Bridge Bus Station, Bay F to Walthamstow Central Station

| | Typical early morning | Typical late AM shopping period | Typical PM shopping period | Typical early evening | Typical late evening |
|--|-----------------------------|--|-------------------------------------|-----------------------------|----------------------------|
| London Bridge Bus Station Bay F | 0550 | 1032 | 1509 | 2022 | 2301 |
| <i>Liverpool Street Bishopsgate</i> | 0556 | 1040 | 1517 | 2030 | 2309 |
| <i>Shoreditch Church</i> | 0601 | 1046 | 1523 | 2036 | 2314 |
| <i>Cambridge Heath Station</i> | 0605 | 1051 | 1528 | 2041 | 2319 |
| <i>Hackney Central Station Amhurst Road</i> | 0611 | 1058 | 1535 | 2047 | 2325 |
| <i>Clapton Kenninghall Road/Thistlewaite Road</i> | 0616 | 1105 | 1542 | 2053 | 2330 |
| <i>Leyton Lea Bridge Road/Markhouse Road</i> | 0622 | 1113 | 1550 | 2059 | 2336 |
| <i>Leyton Bakers Arms, Lea Bridge Road, West of Junction</i> | 0624 | 1116 | 1553 | 2102 | 2338 |
| Walthamstow Central Station | 0629 | 1126 | 1603 | 2108 | 2343 |
| | 39 minutes | 54 minutes | 54 minutes | 46 minutes | 42 minutes |

SUNDAYS1. Walthamstow Central Station to London Bridge Bus Station, Bay F

| | Typical early morning | Typical late AM shopping period | Typical PM shopping period | Typical early evening | Typical late evening |
|--|-----------------------------|--|-------------------------------------|-----------------------------|----------------------------|
| Walthamstow Central Station | 0521 | 1027 | 1517 | 2012 | 2301 |
| <i>Leyton Bakers Arms, Lea Bridge Road, West of Junction</i> | 0526 | 1034 | 1524 | 2018 | 2306 |
| <i>Leyton Lea Bridge Road/Markhouse Road</i> | 0528 | 1037 | 1527 | 2021 | 2309 |
| <i>Clapton Kenninghall Road/Thistlewaite Road</i> | 0533 | 1044 | 1534 | 2027 | 2315 |
| <i>Hackney Central Station Mare Street</i> | 0538 | 1051 | 1541 | 2033 | 2321 |
| <i>Cambridge Heath Station</i> | 0545 | 1100 | 1550 | 2040 | 2328 |
| <i>Shoreditch Church</i> | 0549 | 1107 | 1555 | 2045 | 2333 |
| <i>Liverpool Street Bishopsgate</i> | 0554 | 1117 | 1600 | 2050 | 2338 |
| London Bridge Bus Station Bay F | 0600 | 1126 | 1608 | 2057 | 2344 |
| | 39 minutes | 59 minutes | 51 minutes | 45 minutes | 43 minutes |

2. London Bridge Bus Station, Bay F to Walthamstow Central Station

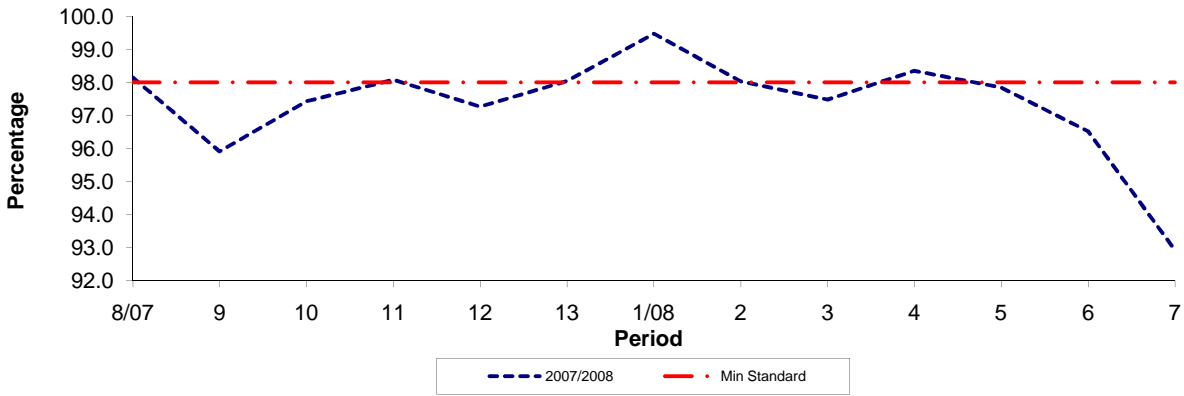
| | Typical early morning | Typical late AM shopping period | Typical PM shopping period | Typical early evening | Typical late evening |
|--|-----------------------------|--|-------------------------------------|-----------------------------|----------------------------|
| London Bridge Bus Station Bay F | 0550 | 1036 | 1510 | 2010 | 2301 |
| <i>Liverpool Street Bishopsgate</i> | 0556 | 1045 | 1519 | 2018 | 2309 |
| <i>Shoreditch Church</i> | 0601 | 1054 | 1528 | 2024 | 2314 |
| <i>Cambridge Heath Station</i> | 0605 | 1101 | 1535 | 2029 | 2319 |
| <i>Hackney Central Station Amhurst Road</i> | 0611 | 1108 | 1541 | 2035 | 2325 |
| <i>Clapton Kenninghall Road/Thistlewaite Road</i> | 0616 | 1115 | 1547 | 2041 | 2330 |
| <i>Leyton Lea Bridge Road/Markhouse Road</i> | 0622 | 1123 | 1553 | 2047 | 2336 |
| <i>Leyton Bakers Arms, Lea Bridge Road, West of Junction</i> | 0624 | 1126 | 1556 | 2050 | 2338 |
| Walthamstow Central Station | 0629 | 1132 | 1602 | 2056 | 2343 |
| | 39 minutes | 56 minutes | 52 minutes | 46 minutes | 42 minutes |

The above tables have been included to assist Tenderers. They represent the information currently available to the Corporation. Tenderers should form their own views about what is appropriate in terms of running times. (See Section 8.)

PART B - PERFORMANCE STATISTICS

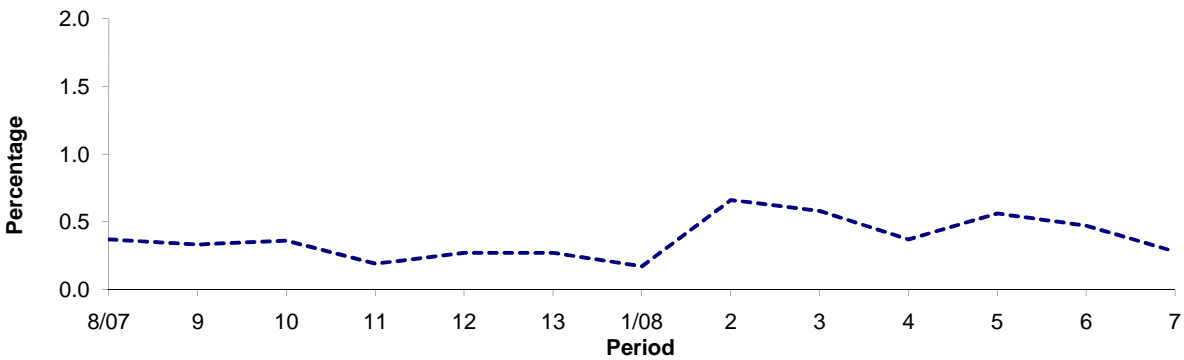
Route 48

Mileage Operated



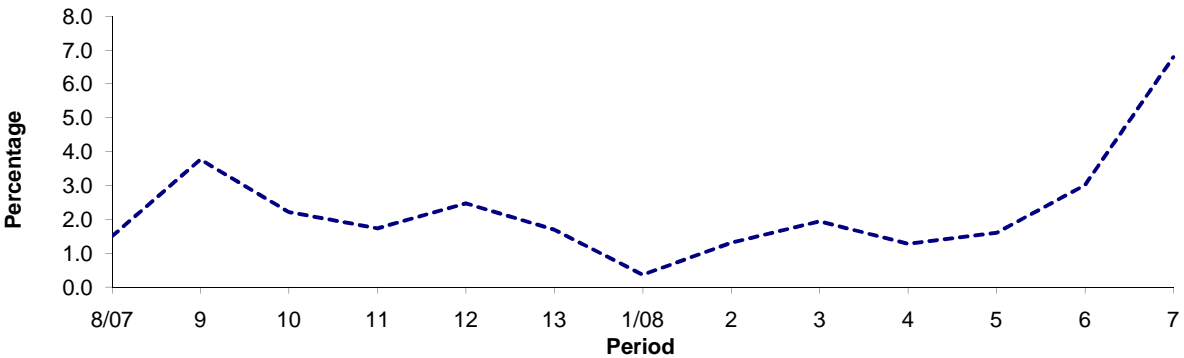
| Period | 8/07 | 9 | 10 | 11 | 12 | 13 | 1/08 | 2 | 3 | 4 | 5 | 6 | 7 |
|--------------|-------|-------|-------|-------|-------|-------|-------|-------|-------|-------|-------|-------|-------|
| 2007/2008 | 98.14 | 95.91 | 97.43 | 98.08 | 97.26 | 98.04 | 99.47 | 98.03 | 97.48 | 98.35 | 97.84 | 96.52 | 92.93 |
| Min Standard | 98.00 | 98.00 | 98.00 | 98.00 | 98.00 | 98.00 | 98.00 | 98.00 | 98.00 | 98.00 | 98.00 | 98.00 | 98.00 |

Deductible Mileage



| Period | 8/07 | 9 | 10 | 11 | 12 | 13 | 1/08 | 2 | 3 | 4 | 5 | 6 | 7 |
|-----------|------|------|------|------|------|------|------|------|------|------|------|------|------|
| 2007/2008 | 0.37 | 0.33 | 0.36 | 0.19 | 0.27 | 0.27 | 0.17 | 0.66 | 0.58 | 0.37 | 0.56 | 0.47 | 0.28 |

Non Deductible Mileage

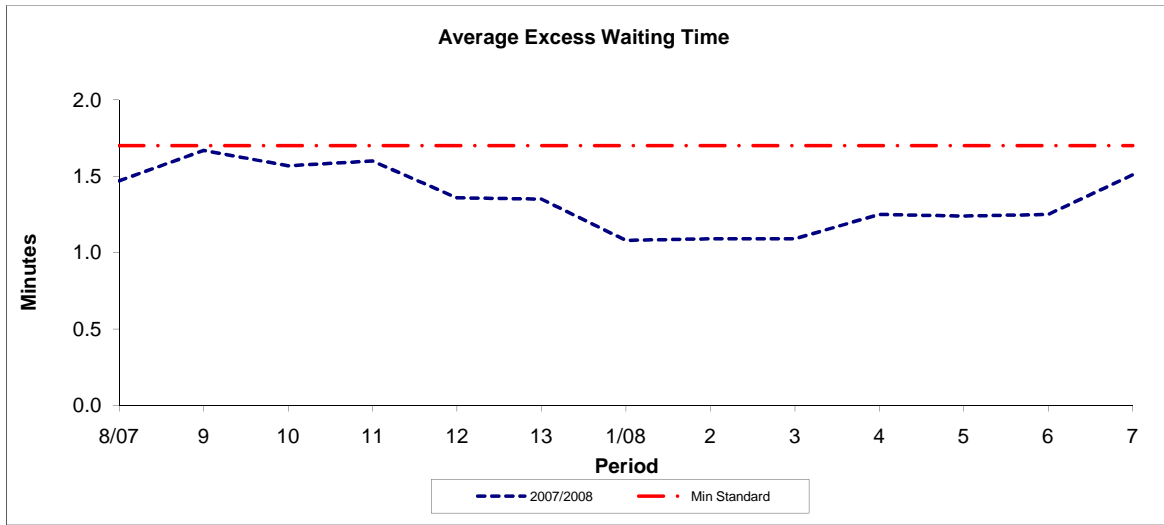


| Period | 8/07 | 9 | 10 | 11 | 12 | 13 | 1/08 | 2 | 3 | 4 | 5 | 6 | 7 |
|-----------|------|------|------|------|------|------|------|------|------|------|------|------|------|
| 2007/2008 | 1.49 | 3.76 | 2.21 | 1.73 | 2.47 | 1.69 | 0.36 | 1.31 | 1.94 | 1.28 | 1.60 | 3.01 | 6.79 |

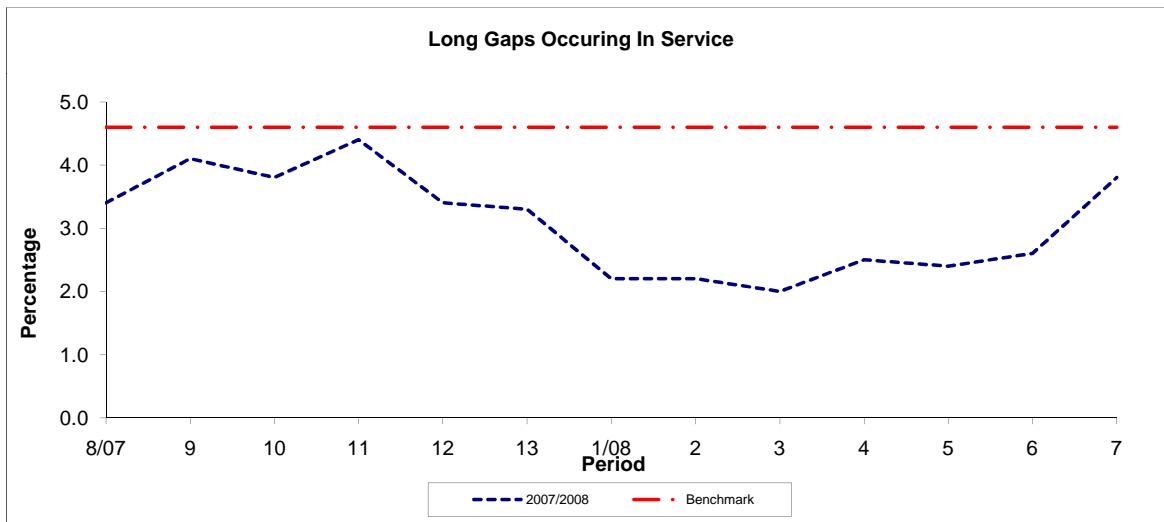
Note : Mileage is based on 4 weeks data

PART B - PERFORMANCE STATISTICS

Route 48



| Period | 8/07 | 9 | 10 | 11 | 12 | 13 | 1/08 | 2 | 3 | 4 | 5 | 6 | 7 |
|--------------|------|------|------|------|------|------|------|------|------|------|------|------|------|
| 2007/2008 | 1.47 | 1.67 | 1.57 | 1.60 | 1.36 | 1.35 | 1.08 | 1.09 | 1.09 | 1.25 | 1.24 | 1.25 | 1.51 |
| Min Standard | 1.70 | 1.70 | 1.70 | 1.70 | 1.70 | 1.70 | 1.70 | 1.70 | 1.70 | 1.70 | 1.70 | 1.70 | 1.70 |



| Period | 8/07 | 9 | 10 | 11 | 12 | 13 | 1/08 | 2 | 3 | 4 | 5 | 6 | 7 |
|-----------|------|------|------|------|------|------|------|------|------|------|------|------|------|
| 2007/2008 | 3.40 | 4.10 | 3.80 | 4.40 | 3.40 | 3.30 | 2.20 | 2.20 | 2.00 | 2.50 | 2.40 | 2.60 | 3.80 |
| Benchmark | 4.60 | 4.60 | 4.60 | 4.60 | 4.60 | 4.60 | 4.60 | 4.60 | 4.60 | 4.60 | 4.60 | 4.60 | 4.60 |

Note : Reliability is based on 12 weeks rolling data