

7. Service Specification

Route: 40

Contract Reference: QC51502

This Service Specification forms section 7 of the ITT and should be read in conjunction with the ITT document, Version 1 dated 29 September 2011.

You are formally invited to tender for the provision of the bus service detailed below and in accordance with this Service Specification. Tenderers must ensure that a Compliant Tender is submitted and this will only be considered for evaluation if all parts of the Tender documents, as set out in section 11, have been received by the Corporation by the Date of Tender. The Tender must be fully completed in the required format, in accordance with the Instructions to Tenderers. A Compliant Tender must comply fully with the requirements of the Framework Agreement; adhere to the requirements of the Service Specification; and reflect the price of operating the Services with new vehicles.

Route Number	40
Terminus Points	Dulwich Library and Aldgate Station
Contract Basis	Incentivised
Commencement Date	30 th April 2016
Vehicle Type	87 capacity, dual door, double deck buses
Current Maximum Approved Dimensions	10.1 metres long and 2.55 metres wide
New Vehicles Mandatory	Yes
Hybrid Price Required	Yes
Sponsored Route	No
Advertising Rights	Operator
Minimum Performance Standard	Average Excess Wait Time - No more than 1.00 minutes
Extension Threshold	Average Excess Wait Time Threshold - 0.90 minutes
Minimum Operated Mileage Standard	No less than 98.00%

The Date of Tender for this ITT is: No later than 12 Noon on Tuesday 26th May 2015

Tenderers should refer to section 3 of Part A for the Service Specification Explanatory Notes and Appendix B of section 5 for the Example Service Specification of the ITT document.

SERVICE SPECIFICATION

- 1) SERVICE SPEC - ROUTE SPECIFICATION INFORMATION
- 2) NOTES
- 3) SCHEDULE REQUIREMENTS & PINCHPOINTS
- 4) OPERATIONAL CONSIDERATIONS
- 5) ROUTE RECORD, CURRENT PERFORMANCE, QSI BY TIME OF DAY, IBUS MILEAGE & QSI POINTS

2) NOTES

Proposed Changes:

At this time, no changes are proposed to the existing service for introduction prior to the commencement of the new Route Agreement for Route No. 40.

Tenderers should note that the following alterations (subject to consultation) are proposed as part of this Service Specification for introduction with the new Route Agreement:

- Ex Dulwich, Library, one Mondays to Fridays AM peak flow journey is withdrawn.
- The two remaining existing Mondays to Fridays AM peak flow journeys which currently operate between 0638 and 0841 are re-timed to operate between 0710 and 0810.
- **From Autumn 2016**, as a result of the removal of Aldgate gyratory (See Section 4.4), Route No. 40 is re-routed in Aldgate.
- Ex Dulwich Library, Route No. 40 is re-routed from Aldgate via Aldgate High Street and Middlesex Street to St. Botolph Street.
- Minories is withdrawn.
- Ex Aldgate Station, Route No. 40 will operate from St. Botolph Street via Middlesex Street to Aldgate High Street to re-join line of routing.
- Aldgate Bus Station is withdrawn.
- **Please see Section 5 for a full list of streets traversed and standing arrangements.**
- **Tenderers should refer to the schedules dated 15th March 2014 which will provide a better guide rather than the temporary emergency schedules.**

Tenderers are also encouraged to offer two axle vehicles with a longer wheelbase and increased capacity, subject to route constraints. Tenders offering such vehicles will be welcomed and carefully considered by the Corporation. Triaxle vehicles are not being considered by the Corporation at this time.

Operators should provide the following prices:

- 1. Annual diesel price - based on minimum 5 year contract.**
- 2. Annual hybrid price - based on minimum 5 year contract.**
- 3. Annual hybrid price - with upfront payment of capital difference between diesel and hybrid for 5 year contract.**

3) SCHEDULE REQUIREMENTS & PINCHPOINTS

3.1) MONDAY TO FRIDAY SCHEDULE REQUIREMENTS & PINCHPOINTS

Dulwich, Library to Aldgate Station			Dulwich, Library to Aldgate Station		
First departure no later than 0400.			First departure no later than 0435.		
0355 - 0500	Every 15 minutes		0430 - 0550	Every 15 minutes	
0501 - 0600	Every 12 minutes		0551 - 0625	Every 12 minutes	
0601 - 0640	Every 10 minutes		0626 - 0655	Every 10 minutes	
0641 - 0710	Every 8 minutes		0656 - 1645	Every 8 minutes	
0711 - 0810	Every 6-7 minutes (9 buses per hour)		1646 - 1745	Every 7 minutes (8½ buses per hour)	
0811 - 1805	Every 8 minutes		1746 - 1910	Every 8 minutes	
1806 - 1905	Every 10 minutes		1911 - 2000	Every 10 minutes	
1906 - 1955	Every 12 minutes		2001 - 2025	Every 12 minutes	
1956 - 2400	Every 15 minutes		2026 - 2400	Every 15 minutes	
Last departure no earlier than 2355.			Last departure no earlier than 2355.		
Pinchpoints					
Elephant & Castle, Tabernacle	0710 - 0740	8 minutes	Camberwell Green, Denmark Hill	0720 - 0920	8 minutes
	0741 - 0840	7 minutes		1500 - 1630	8 minutes
	0841 - 0910	8 minutes		1720 - 1820	7 minutes
	1500 - 1630	8 minutes			

3.2) SATURDAY AND GOOD FRIDAY SCHEDULE REQUIREMENTS & PINCHPOINTS

Dulwich, Library to Aldgate Station			Dulwich, Library to Aldgate Station		
First departure no later than 0400.			First departure no later than 0435.		
0355 - 0500	Every 30 minutes		0430 - 0605	Every 30 minutes	
0501 - 0600	Every 20 minutes		0606 - 0645	Every 20 minutes	
0601 - 0745	Every 15 minutes		0646 - 0815	Every 15 minutes	
0746 - 0820	Every 12 minutes		0816 - 0840	Every 12 minutes	
0821 - 1805	Every 10 minutes		0841 - 1900	Every 10 minutes	
1806 - 1840	Every 12 minutes		1901 - 1925	Every 12 minutes	
1841 - 2400	Every 15 minutes		1926 - 2400	Every 15 minutes	
Last departure no earlier than 2355.			Last departure no earlier than 2355.		
Pinchpoints					
Elephant & Castle, Tabernacle	0845 - 1105	10 minutes	Camberwell Green, Denmark Hill	0905 - 1135	10 minutes

3) SCHEDULE REQUIREMENTS & PINCHPOINTS - continued

3.3) SUNDAY AND PUBLIC HOLIDAYS (EXCEPT GOOD FRIDAY AND CHRISTMAS DAY) SCHEDULE REQUIREMENTS & PINCHPOINTS

Dulwich, Library to Aldgate Station			Dulwich, Library to Aldgate Station		
First departure no later than 0525.			First departure no later than 0600.		
0520 - 0555	Every 30 minutes		0555 - 0700	Every 30 minutes	
0556 - 0755	Every 20 minutes		0701 - 0840	Every 20 minutes	
0756 - 2400	Every 15 minutes		0841 - 2400	Every 15 minutes	
Last departure no earlier than 2355.			Last departure no earlier than 2355.		
Pinchpoints					
Elephant & Castle, Tabernacle	0950 - 1205	15 minutes	Camberwell Green, Denmark Hill	0950 - 1150	15 minutes

Tenderers must identify the cost of the Boxing Day element of this service separately.

4) OPERATIONAL CONSIDERATIONS

- 4.1) Route No. 40 should interwork with Route No. 35 between Camberwell Green, Denmark Hill and London Bridge Station, Southwark Cathedral during Saturdays and Sundays daytimes and all evenings.
- 4.2) Route No. 40 can suffer from unpredictable traffic delays in the Elephant & Castle and Aldgate areas.
- 4.3) Route No. 40 serves several markets in the Camberwell, East Street and Aldgate area. Traffic conditions will therefore have a severe impact on Route No. 40 on market days. Tenderers should bear this in mind when devising schedules.
- 4.4) Works are currently underway to remove the gyratory at Aldgate which are expected to be completed in Autumn 2016. The scheme involves making St. Botolph Street, most of Aldgate High Street and Minories two way. The western section of Aldgate High Street between Duke's Place and Minories will be pedestrianised. This will create a traffic free space between the Sir John Cass's Foundation Primary School and St. Botolph Church. Mansell Street, Houndsditch and Duke's Place will all remain one way as now. The junction of Goodman's Yard and Minories will also be altered to allow northbound traffic to enter Minories.

4) OPERATIONAL CONSIDERATIONS - continued

- 4.5) Crossrail will connect the City, Canary Wharf, the West End and Heathrow Airport to commuter areas east and west of the capital. Major construction of the railway began in 2010, with services expected to commence in 2018. The construction impacts of Crossrail could affect Route No. 40 and it is anticipated that some passenger demand for Route No. 40 may shift to this line when it opens. Route No. 40 will be reviewed closer to the opening date.

5) ROUTE RECORD, CURRENT PERFORMANCE, QSI BY TIME OF DAY, IBUS MILEAGE & QSI POINTS

- 5.1) ROUTE RECORD
As per Busnet printout.
- 5.2) CURRENT PERFORMANCE
As per current print out.
- 5.3) QSI BY TIME OF DAY
As per current print out.
- 5.4) IBUS MILEAGE & QSI POINTS
As per current print out.

LONDON BUSES - ROUTE DESCRIPTION

ROUTE 40: Dulwich, Library - Aldgate Station

Date of Structural Change: 30 April 2016.

Date of Service Change: 30 April 2016.

Reason for Issue: New Tender.

STREETS TRAVERSED

Towards Aldgate Station: Etherow Street, Barry Road, Lordship Lane, Grove Vale, Dog Kennel Hill, Grove Lane, Champion Park, Denmark Hill, Camberwell Green (West Side), Camberwell Road, Walworth Road, Elephant And Castle, Newington Causeway, Borough High Street, London Bridge, King William Street, Gracechurch Street, Fenchurch Street, Aldgate, Aldgate High Street, St Botolph Street.

Towards Dulwich, Library: St Botolph Street, Aldgate High Street, Aldgate, Fenchurch Street, Gracechurch Street, King William Street, London Bridge, Borough High Street, Newington Causeway, Elephant And Castle, Walworth Road, Camberwell Road, Camberwell Green (West Side), Denmark Hill, Champion Park, Grove Lane, Dog Kennel Hill, Grove Vale, Lordship Lane.

AUTHORISED STANDS, CURTAILMENT POINTS, & BLIND DESCRIPTIONS

Please note that only stands, curtailment points, & blind descriptions as detailed in this contractual document may be used.

DULWICH, ETHEROW STREET

Public stand for three buses in Etherow Street commencing 11 metres south east of a point opposite western wall of no. 259 Barry Road and extending 31.5 metres south eastwards. Buses proceed from Lordship Lane via Friern Road and Etherow Street to stand, departing to Etherow Street. Set down in Lordship Lane, at Stop DE (BP601 - Dulwich Library, Last Stop on LOR: BP601 - Dulwich Library) and pick up in Etherow Street, at Stop DA (29386 - Dulwich / The Plough, First Stop on LOR: 29386 - Dulwich / The Plough).

AVAILABILITY:	At any time.
OPERATING RESTRICTIONS:	No more than 2 buses on Route 40 should be scheduled to stand at any one time.
MEAL RELIEFS:	No meal relief vehicles to stand at any time.
FERRY VEHICLES:	No ferry vehicles to park on stand at any time.
BLIND DISPLAY:	Dulwich Library.
OTHER INFORMATION:	Toilets available (24 hours). A maximum scheduled stand time of 10 minutes is allowed between 0740 and 1800 (Mon-Fri) and 1030 and 1800 (Sat and Sun).

EAST DULWICH, GOOSE GREEN (from ALDGATE STATION)

Buses proceed from Grove Vale departing to Grove Vale. Set down in Grove Vale, at Stop F (BP574 - Ondine Road, Last Stop on LOR: BP574 - Ondine Road) and pick up in Grove Vale, at Stop A (13380 - Elsie Road, First Stop on LOR: 13380 - Elsie Road).

AVAILABILITY:	At any time.
OPERATING RESTRICTIONS:	Turning Point Only - Buses must not stand
BLIND DISPLAY:	East Dulwich.

ELEPHANT & CASTLE, SOUTHWARK BRIDGE ROAD (from Dulwich, Library)

Buses proceed from Newington Causeway via Southwark Bridge Road and Gaunt Street departing to Newington Causeway. Set down in Newington Causeway, at stop F (33624 - Elephant & Castle / Newington Causeway, Last Stop on LOR: 33624 - Elephant & Castle / Newington Causeway) and pick up in Newington Causeway, at stop G (33625 - Elephant & Castle / Newington Causeway, First Stop on LOR: 33625 - Elephant & Castle / Newington Causeway).

AVAILABILITY:	At any time.
OPERATING RESTRICTIONS:	Turning Point Only - Buses must not stand
BLIND DISPLAY:	Elephant & Castle.

LONDON BRIDGE STATION (from Dulwich, Library)

Buses proceed from Borough High Street via Railway Approach, London Bridge Bus Station and London Bridge Street departing to Borough High Street. Set down in Borough High Street, at Stop G (BP851 - Union Street, Last Stop on LOR: BP851 - Union Street) and pick up in Borough High Street (BP4481 - Southwark Street, First Stop on LOR: BP4481 - Southwark Street).

AVAILABILITY: At any time.
OPERATING RESTRICTIONS: **Turning Point Only - Buses must not stand**
BLIND DISPLAY: London Bridge.

HOUNDSDITCH STAND

Temporary stand on north east side of Houndsditch, commencing 7 metres south east of Barbon Alley and extending 20 metres south east.

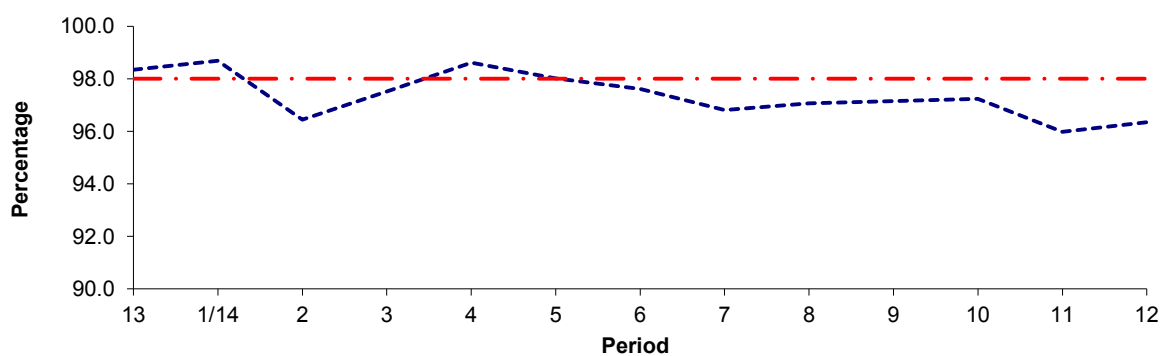
Buses proceed from St Botolph Street via Duke's Place, Bevis Marks, Camomile Street, Outwich Street and Houndsditch to stand, departing via Houndsditch to St Botolph Street. Set down in St Botolph Street, at Stop B (34190 - St Botolph Street, Last Stop on LOR: 34190 - St Botolph Street) and pick up in St Botolph Street, at Stop A (34190 - St Botolph Street, First Stop on LOR: 104 - Fenchurch Street Station #).

AVAILABILITY: At any time.
OPERATING RESTRICTIONS: No more than 2 buses on Route 40 should be scheduled to stand at any one time.
MEAL RELIEFS: No meal relief vehicles to stand at any time.
FERRY VEHICLES: No ferry vehicles to park on stand at any time.
BLIND DISPLAY: Aldgate.

PART B - PERFORMANCE STATISTICS

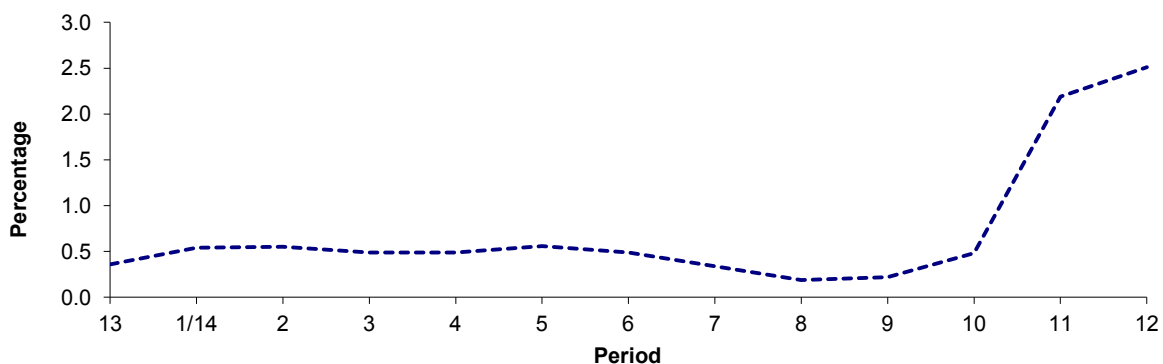
Route 40

Mileage Operated



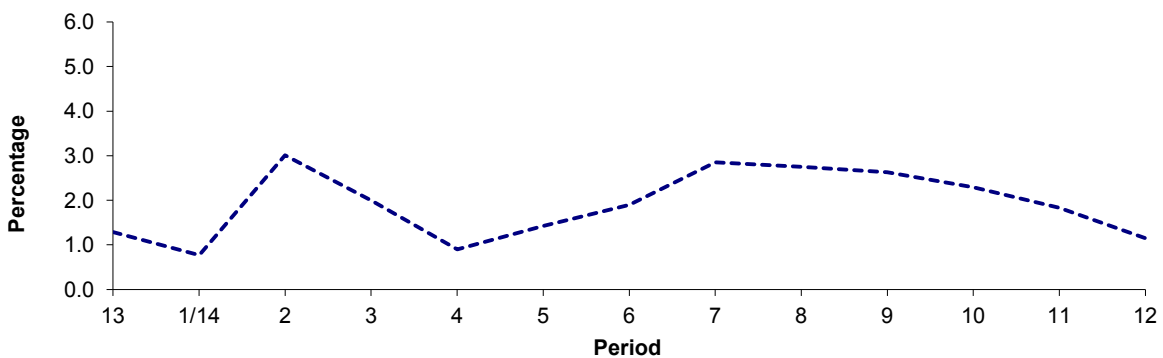
Period	13	1/14	2	3	4	5	6	7	8	9	10	11	12
2013/2014	98.35	98.69	96.44	97.51	98.61	98.02	97.61	96.81	97.06	97.15	97.23	95.98	96.34
Min Standard	98.00	98.00	98.00	98.00	98.00	98.00	98.00	98.00	98.00	98.00	98.00	98.00	98.00

Deductible Mileage



Period	13	1/14	2	3	4	5	6	7	8	9	10	11	12
2013/2014	0.36	0.54	0.55	0.49	0.49	0.56	0.49	0.34	0.19	0.22	0.48	2.19	2.51

Non Deductible Mileage

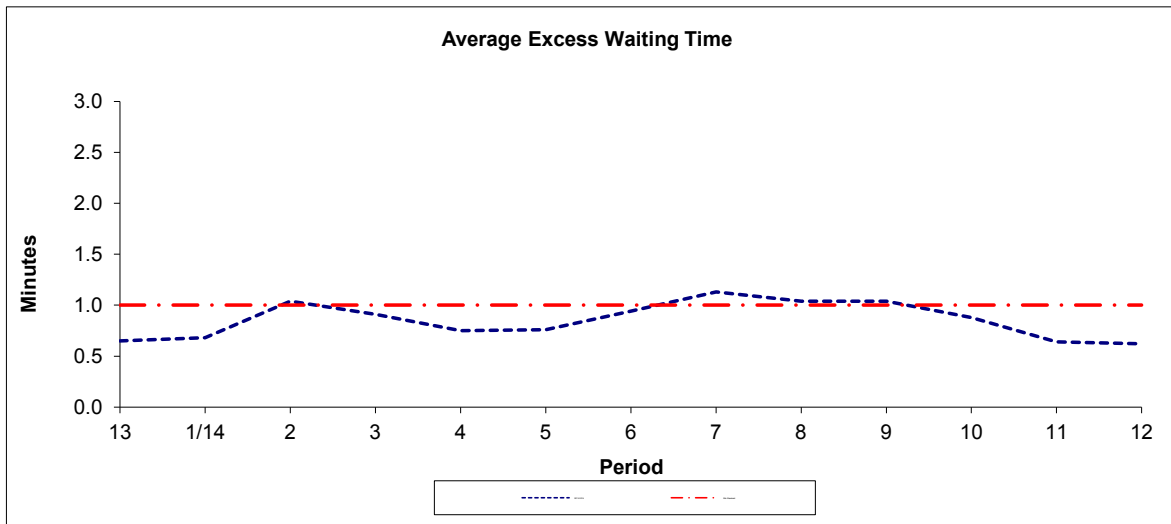


Period	13	1/14	2	3	4	5	6	7	8	9	10	11	12
2013/2014	1.29	0.77	3.01	2.00	0.90	1.42	1.90	2.85	2.75	2.63	2.29	1.83	1.15

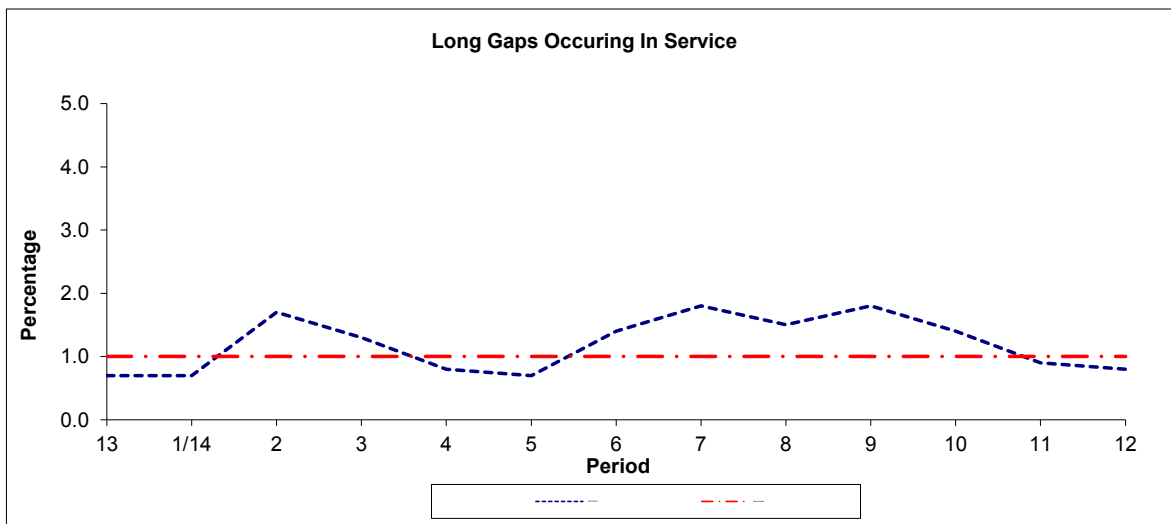
Note : Mileage is based on 4 weeks data
Deductible mileage performance adversely affected by industrial action by drivers in periods 11 and 12.

PART B - PERFORMANCE STATISTICS

Route 40



Period	13	1/14	2	3	4	5	6	7	8	9	10	11	12
2013-2014	0.65	0.68	1.04	0.91	0.75	0.76	0.94	1.13	1.04	1.04	0.88	0.64	0.62
Min Standard	1.00	1.00	1.00	1.00	1.00	1.00	1.00	1.00	1.00	1.00	1.00	1.00	1.00



Period	13	1/14	2	3	4	5	6	7	8	9	10	11	12
2013-2014	0.7	0.7	1.7	1.3	0.8	0.7	1.4	1.8	1.5	1.8	1.4	0.9	0.8
Benchmark	1.0	1.0	1.0	1.0	1.0	1.0	1.0	1.0	1.0	1.0	1.0	1.0	1.0

Note : Reliability is actual performance under full iBus (4 weeks data).
Minimum Standards and Benchmarks are those applicable under the new contract.

ROUTE 40 - FULL IBUS RESULTS BY TIME OF DAY

QUARTER 4 13/14 TO QUARTER 3 14/15 (04/01/14 - 02/01/15)

MONDAY - FRIDAY

Time Period	Expected Buses	On AVL (%)	Scheduled Waiting Time (SWT) (mins)	Excess Waiting Time (EWT) (mins)	Actual Waiting Time (AWT) (mins)	Probability of Waiting < 10 mins (%)	Probability of Waiting 10-20 mins (%)	Probability of Waiting 20-30 mins (%)	Probability of Waiting > 30 mins (%)	Long Gaps (%)	Maximum Gap (mins)
0500 - 0700	24,038.	96.7	6.08	0.45	6.53	80.4	19.2	0.4	0.0	0.1	39
0700 - 1000	58,559.	95.5	3.81	0.82	4.63	92.1	7.7	0.2	0.0	1.2	49
1000 - 1300	54,445.	99.1	4.00	0.74	4.74	92.2	7.5	0.3	0.0	0.9	39
1300 - 1600	54,907.	97.5	4.00	0.71	4.72	92.3	7.4	0.2	0.0	0.8	56
1600 - 1900	55,034.	94.4	3.97	1.17	5.15	88.0	11.2	0.7	0.1	2.4	61
1900 - 2200	36,343.	99.5	5.90	1.03	6.93	73.6	23.2	2.8	0.5	1.6	64
2200 - 2400	19,507.	101.5	7.36	1.11	8.48	64.3	29.9	4.8	1.0	1.1	59
Summary	302,833.	97.3	4.38	0.90	5.28	87.5	11.5	0.8	0.1	1.4	64

SATURDAY

Time Period	Expected Buses	On AVL (%)	Scheduled Waiting Time (SWT) (mins)	Excess Waiting Time (EWT) (mins)	Actual Waiting Time (AWT) (mins)	Probability of Waiting < 10 mins (%)	Probability of Waiting 10-20 mins (%)	Probability of Waiting 20-30 mins (%)	Probability of Waiting > 30 mins (%)	Long Gaps (%)	Maximum Gap (mins)
0500 - 0700	2,832.	96.4	11.27	0.76	12.04	50.6	38.0	10.1	1.3	0.0	64
0700 - 1000	7,547.	98.4	6.03	0.72	6.75	78.6	20.2	1.0	0.2	0.5	82
1000 - 1300	9,162.	95.5	5.06	0.88	5.94	83.4	15.6	0.8	0.1	0.9	48
1300 - 1600	9,180.	95.1	5.00	1.12	6.12	81.8	16.7	1.3	0.1	1.5	51
1600 - 1900	9,112.	97.2	5.06	0.96	6.02	82.7	16.1	1.1	0.1	1.1	40
1900 - 2200	6,631.	101.4	6.86	0.60	7.46	69.3	28.4	2.0	0.2	0.5	44
2200 - 2400	4,156.	98.2	7.41	1.13	8.53	63.0	31.2	4.9	0.9	1.1	46
Summary	48,620.	97.3	5.64	0.91	6.56	78.8	19.4	1.6	0.2	1.0	82

SUNDAY AND BANK HOLIDAYS

Time Period	Expected Buses	On AVL (%)	Scheduled Waiting Time (SWT) (mins)	Excess Waiting Time (EWT) (mins)	Actual Waiting Time (AWT) (mins)	Probability of Waiting < 10 mins (%)	Probability of Waiting 10-20 mins (%)	Probability of Waiting 20-30 mins (%)	Probability of Waiting > 30 mins (%)	Long Gaps (%)	Maximum Gap (mins)
0500 - 0700	1,710.	93.9	13.65	0.30	13.96	54.3	27.6	14.6	3.5	3.7	55
0700 - 1000	5,718.	101.4	8.99	0.34	9.33	59.0	37.1	3.6	0.3	0.1	57
1000 - 1300	6,852.	98.5	7.51	0.45	7.96	65.5	32.8	1.6	0.2	0.2	40
1300 - 1600	6,840.	101.0	7.43	0.53	7.96	66.3	31.5	1.8	0.3	0.3	58
1600 - 1900	6,854.	100.7	7.39	0.59	7.98	66.0	31.4	2.2	0.4	0.4	56
1900 - 2200	6,915.	97.5	7.40	0.88	8.29	64.0	31.8	3.6	0.5	0.6	49
2200 - 2400	4,545.	104.4	7.46	0.52	7.98	67.1	30.7	2.0	0.2	0.2	50
Summary	39,434.	100.0	7.69	0.55	8.24	64.9	32.2	2.5	0.4	0.4	58

ALL DAYS

Time Period	Expected Buses	On AVL (%)	Scheduled Waiting Time (SWT) (mins)	Excess Waiting Time (EWT) (mins)	Actual Waiting Time (AWT) (mins)	Probability of Waiting < 10 mins (%)	Probability of Waiting 10-20 mins (%)	Probability of Waiting 20-30 mins (%)	Probability of Waiting > 30 mins (%)	Long Gaps (%)	Maximum Gap (mins)
0500 - 0700	28,580.	96.5	7.09	0.46	7.55	75.6	21.7	2.3	0.3	0.3	64
0700 - 1000	71,824.	96.3	4.25	0.79	5.04	89.4	10.2	0.4	0.0	1.0	82
1000 - 1300	70,459.	98.6	4.57	0.73	5.30	87.8	11.7	0.5	0.1	0.8	48
1300 - 1600	70,927.	97.6	4.51	0.76	5.26	88.1	11.3	0.6	0.1	0.9	58
1600 - 1900	71,000.	95.4	4.42	1.09	5.51	85.3	13.7	0.9	0.1	2.1	61
1900 - 2200	49,889.	99.5	6.19	0.96	7.15	72.0	24.8	2.8	0.4	1.3	64
2200 - 2400	28,208.	101.5	7.38	1.03	8.41	64.5	30.2	4.4	0.9	0.9	59
Summary	390,887.	97.6	4.85	0.87	5.72	84.3	14.5	1.1	0.2	1.2	82

Transport for London - QSI Points and Live Mileage List

Route 40
 Service change 34401
 Date 15/03/2014

Reason for Issue

QSI Points are highlighted.

OUT DIRECTION				
Timing Point Code	Stop Number	Stop Name	Metres	Miles
DULWLB	29386	Dulwich / The Plough	0	0
	26036	Dulwich / The Plough	179	0.11
	26037	Crystal Palace Road	205	0.13
	26039	Heber Road	241	0.15
	26041	East Dulwich Police Station	391	0.24
	26043	North Cross Road	188	0.12
EDULGG	26046	Goose Green	234	0.15
	13380	Elsie Road	343	0.21
	26047	East Dulwich Station	158	0.10
	26050	Champion Hill	466	0.29
	26051	Champion Grove	216	0.13
	26054	Denmark Hill Station	424	0.26
	26057	King's College Hospital	317	0.20
	2013	Coldharbour Lane	216	0.13
CAMGDH	263	Denmark Hill / Camberwell Green	214	0.13
CAMGWS	26060	Camberwell Green	177	0.11
	2616	Medlar Street	183	0.11
	2614	Wyndham Road	216	0.13
	2613	Bowyer Place	233	0.14
	658	Camberwell Road / Albany Road	121	0.08
	656	Westmoreland Road	334	0.21
	2608	East Street	322	0.20
	BP4962	Larcom Street	376	0.23
	2602	Hampton Street	217	0.13
ELEFTN	33619	Elephant & Castle Station	276	0.17
	33624	Elephant & Castle / Newington Causeway	351	0.22
	2137	Southwark Police Station	282	0.18
	26352	Borough Station	354	0.22
	BP851	Union Street	303	0.19
LONBSC	978	London Bridge	491	0.31
	2123	Monument Station	324	0.20
	871	Gracechurch Street / Monument Station	263	0.16
	8566	Rood Lane	253	0.16
	8568	Fenchurch Street Station	208	0.13
ALDGSN		St Botolph Street (New Stop B)	650	0.40
HDS DCH S		HOUNDSDITCH	480	0.30
(DEAD MILEAGE ABOVE NOT INCLUDED IN FINAL TOTAL)				

Total Route Mileage - Out Direction	9726	6.04
	Metres	Miles

Mileage in red font is a planning estimates & not an ibus calculation

Mileage in green font is dead mileage

FINAL MILEAGE TO BE CONFIRMED

TRANCHE 515

End of Fenchurch Street diversion

BACK DIRECTION				
Timing Point Code	Stop Number	Stop Name	Metres	Miles
HSDSCH S		HOUNSDITCH		
ALDGSN		St Botolph Street (New Stop A)	419	0.26
<i>(DEAD MILEAGE ABOVE NOT INCLUDED IN FINAL TOTAL)</i>				
		Aldgate Station (New Stop D)	175	0.11
	104	Fenchurch Street Station	440	0.27
	8567	Rood Lane	158	0.10
	37676	Fenchurch Street	274	0.17
	BP140	Monument Station	268	0.17
LONBLBY	BP892	London Bridge	313	0.19
	BP4481	Southwark Street	368	0.23
	2135	Union Street	204	0.13
	26353	Borough Station	251	0.16
	91531	Borough Police Station	313	0.19
	33625	Elephant & Castle / Newington Causeway	233	0.14
ELEFTN	33614	Elephant & Castle Station	385	0.24
	26063	Larcom Street	480	0.30
	47001	East Street	365	0.23
	657	Westmoreland Road	290	0.18
	2612	Camberwell Road / Albany Road	399	0.25
	2615	Bowyer Place	185	0.11
CAMBNH	34460	Medlar Street	266	0.17
CAMGDH	256	Denmark Hill / Camberwell Green	435	0.27
	26058	Coldharbour Lane	281	0.17
	26056	King's College Hospital	315	0.20
	26053	Denmark Hill Station	263	0.16
	BP3226	Grove Lane / Champion Park	234	0.15
	26052	Champion Grove	216	0.13
	26049	Champion Hill	190	0.12
	BP3227	Quorn Road	267	0.17
	BP4398	East Dulwich Station	184	0.11
	BP574	Ondine Road	278	0.17
EDULGG	26045	Goose Green	283	0.18
	R0884	North Cross Road	209	0.13
	26042	East Dulwich Police Station	248	0.15
	26040	Heber Road	288	0.18
	26038	Crystal Palace Road	254	0.16
DULWLB	BP601	Dulwich Library	263	0.16
Total Route Mileage - Back Direction			9575	5.95
			Metres	Miles

Mileages in red font are planning estimates & not ibus calculations

Mileage in green font is dead mileage

FINAL MILEAGE TO BE CONFIRMED

SECTION 2: PART A

SERVICE SPECIFICATION FOR ROUTE No. 40

CONTENTS

	Page
1. Tenders Required	2
2. Proposed Changes	2
3. Terminals	2
4. Days of Operation	2
5. Vehicle Type	3
6. Frequencies	4
7. Minimum Performance Standards	9
8. Running Times	10
9. Layovers	10
10. Timing Constraints	10
11. Control Strategy	11
12. Operational Considerations	11
13. Stopping Arrangements	12
14. Timing Points and Mileages	12
15. Vehicle Livery	13

Appendices

A. Route Record	14
B. Sample Running Times for Route No. 40	17

This document should be read in conjunction with the Corporation's Guide for Tenderers (Part A: Explanatory Notes - Service Requirements). Where appropriate, reference is made to the relevant section.

1. TENDERS REQUIRED

This document describes the service for which the Corporation requires Tenders and Tenderers **must** submit a fully compliant bid. In addition, Tenderers **may** wish to draw upon their local knowledge to submit alternative bids which offer improved value for money in meeting passenger needs. These might incorporate, for example, different timings, frequencies, route structures and / or vehicles. The Corporation will welcome such bids and give them careful consideration.

For more information, please refer to Section 2.1 of Part A of the Guide for Tenderers.

2. PROPOSED CHANGES

At this time, no changes are proposed to the existing service for introduction prior to the commencement of the new Route Agreement for Route No. 40.

Tenderers should note that the following alterations (subject to consultation) are proposed as part of this Service Specification for introduction with the new Route Agreement:

- Saturday shopping period frequencies are increased from every 12 minutes to every 10 minutes.
- Boxing Day frequencies are specified at Sunday frequency levels but with a later start. **Tenderers must include the cost of the Boxing Day element of this service within Section 4.1 of their tender bid. Tenderers must also identify the cost of the Boxing Day element of this service separately.**

3. TERMINALS

Route No. 40 will operate between Dulwich, Library and Aldgate Station.

Full details of the route to be followed, the permitted terminal workings and the available stands are shown at Appendix A. Tenderers should particularly note the information relating to the shared usage of stands, the taking of meal reliefs and the use of ferry vehicles.

4. DAYS OF OPERATION

One timetable must be offered for Route No. 40 which will operate as follows:

DAY OF OPERATION	
Mondays to Fridays	Section 6.1
Saturdays & Good Friday	Section 6.2
Sundays	Section 6.3
Christmas Day	No service
Boxing Day	Section 6.4
Other Public Holidays	Sunday service

5. VEHICLE TYPE

Please refer to Section 2.5 of Part A of the Guide for Tenderers.

Route No. 40 is currently approved for vehicles which are a maximum of 10.0 metres long and 2.55 metres wide. A formal route test will be required for vehicles which exceed these dimensions. This will be arranged with the successful Tenderer.

The service requirement set out in Section 6 assumes that dual door, double deck buses with a minimum capacity of 87 of which approximately 60 should be seated, will be used on this route. Luggage space should also be provided.

Tenderers must submit proposals based on new vehicles. These must be of a low floor design and be accessible to wheelchairs by means of a powered ramp.

Tenderers should refer to the vehicle design (including accessibility) features contained in Schedule II to Annex B of the Framework Agreement and Section 2 Part B of the Master ITT (Version 2 issued June 2005).

Tenderers may also submit bids based on using existing vehicles. Tenderers are asked to specify what refurbishment would be carried out on existing buses and the expected timescale of those works. See Master ITT (Version 2 issued June 2005).

6. FREQUENCIES

The level of service (e.g. every 15 minutes) required by the Corporation is described in terms of the interval between departures. Whilst a completely regular service at the specified frequency should be possible at most times, occasionally a bus may be timetabled to depart up to five minutes earlier or later than the regular time.

Tenderers should note that when the specified frequency changes (e.g. between the peak and midday periods), the scheduled interval between buses should never be greater than that provided by the lower of the two frequencies **AT ANY POINT ON THE ROUTE**.

Tenderers should note that unless otherwise stated **all** journeys should operate between the terminal points defined in each direction.

6.1 Mondays to Fridays

1. Dulwich, Library to Aldgate Station

0355 - 0500	Every 15 minutes
0501 - 0600	Every 12 minutes
0601 - 0640	Every 10 minutes
0641 - 0740	Every 8 minutes
0741 - 0840	Every 7 minutes (8½ buses per hour)
0841 - 1800	Every 8 minutes
1801 - 1900	Every 10 minutes
1901 - 2000	Every 12 minutes
2001 - 2400	Every 15 minutes

First departure from Dulwich, Library no later than 0400.

Last departure from Dulwich, Library no earlier than 2355.

Tenderers should ensure that buses are scheduled to be no more than 8 minutes apart at Elephant & Castle between 0730 and 0815, no more than 7 minutes apart between 0815 and 0900 and no more than 8 minutes between 1530 and 1630.

2. Aldgate Bus Station to Dulwich, Library

0430 - 0530	Every 15 minutes
0531 - 0630	Every 12 minutes
0631 - 0700	Every 10 minutes
0701 - 1645	Every 8 minutes
1646 - 1745	Every 7 minutes (8½ buses per hour)
1746 - 1900	Every 8 minutes
1901 - 1940	Every 10 minutes
1941 - 2030	Every 12 minutes
2031 - 2400	Every 15 minutes

First departure from Aldgate Bus Station no later than 0435.

Last departure from Aldgate Bus Station no earlier than 2355.

Tenderers should ensure that buses are scheduled to be no more than 8 minutes apart at Camberwell Green, Denmark Hill between 0725 and 0845 and between 1530 and 1630.

Tenderers should note that crew reliefs at bus stops in the vicinity of Camberwell Green can lead to significant passenger disbenefit. Tenderers should separately identify costs, where appropriate, for carrying out crew changes at one end of the route.

6.2 Saturdays

1. Dulwich, Library to Aldgate Station

0355 - 0500	Every 30 minutes
0501 - 0600	Every 20 minutes
0601 - 0745	Every 15 minutes
0746 - 0815	Every 12 minutes
0816 - 1745	Every 10 minutes
1746 - 1815	Every 12 minutes
1816 - 2400	Every 15 minutes

First departure from Dulwich, Library no later than 0400.

Last departure from Dulwich, Library no earlier than 2355.

Tenderers should ensure that buses are scheduled to be no more than 10 minutes apart at Elephant & Castle between 0900 and 1030.

2. Aldgate Bus Station to Dulwich, Library

0430 - 0600	Every 30 minutes
0601 - 0700	Every 20 minutes
0701 - 0815	Every 15 minutes
0816 - 0845	Every 12 minutes
0846 - 1845	Every 10 minutes
1846 - 1915	Every 12 minutes
1916 - 2400	Every 15 minutes

First departure from Aldgate Bus Station no later than 0435.

Last departure from Aldgate Bus Station no earlier than 2355.

Tenderers should ensure that buses are scheduled to be no more than 10 minutes apart at Camberwell Green, Denmark Hill between 0900 and 1030.

Tenderers should note that crew reliefs at bus stops in the vicinity of Camberwell Green can lead to significant passenger disbenefit. Tenderers should separately identify costs, where appropriate, for carrying out crew changes at one end of the route.

6.3 Sundays

1. Dulwich, Library to Aldgate Station

0525 - 0600	Every 30 minutes
0601 - 0900	Every 20 minutes
0901 - 2400	Every 15 minutes

First departure from Dulwich, Library no later than 0530.

Last departure from Dulwich, Library no earlier than 2355.

Tenderers should ensure that buses are scheduled to be no more than 15 minutes apart at Elephant & Castle between 0930 and 1130.

2. Aldgate Bus Station to Dulwich, Library

0600 - 0700	Every 30 minutes
0701 - 0940	Every 20 minutes
0941 - 2400	Every 15 minutes

First departure from Aldgate Bus Station no later than 0605.

Last departure from Aldgate Bus Station no earlier than 2355.

Tenderers should ensure that buses are scheduled to be no more than 15 minutes apart at Camberwell Green, Denmark Hill between 1000 and 1200.

Tenderers should note that crew reliefs at bus stops in the vicinity of Camberwell Green can lead to significant passenger disbenefit. Tenderers should separately identify costs, where appropriate, for carrying out crew changes at one end of the route.

6.4 Boxing Day

1. Dulwich, Library to Aldgate Station

0755 - 0900	Every 20 minutes
0901 - 2400	Every 15 minutes

First departure from Dulwich, Library no later than 0800.
Last departure from Dulwich, Library no earlier than 2355.

2. Aldgate Bus Station to Dulwich, Library

0755 - 0940	Every 20 minutes
0941 - 2400	Every 15 minutes

First departure from Aldgate Bus Station no later than 0800.
Last departure from Aldgate Bus Station no earlier than 2355.

Tenderers must indicate costs for this element of the service separately.

Tenderers should note that crew reliefs at bus stops in the vicinity of Camberwell Green can lead to significant passenger disbenefit. Tenderers should separately identify costs, where appropriate, for carrying out crew changes at one end of the route.

7. MINIMUM PERFORMANCE STANDARDS

Please refer to Section 2.7 of Part A of the Guide for Tenderers.

Tenderers should note that the objective of the Operator of Route No. 40 shall be to operate all scheduled mileage and adhere **fully** to the published timetable. The Operator must use its best endeavours to achieve this.

The **minimum** standards of acceptable performance for Route No. 40 shall be:

Average Excess Wait Time:	No more than 0.90 minutes
Minimum Operated Mileage:	No less than 98.00%

or as notified by the Corporation from time to time. The Operator will be required to achieve or better the standards.

QSI Thresholds

The QSI threshold is the standard of performance to be achieved by the operator in order to qualify for an automatic contract extension (in accordance with Schedule IX of the Framework Agreement).

Average Excess Wait Time Threshold = 0.80 minutes

Summary of proposed QSI coverage: Route No. 40

Note: While London Buses undertakes to carry out QSI surveys at the times and locations specified below, it may prove impossible to rearrange a survey cancelled or nullified at short notice.

Survey locations

Towards Aldgate

East Dulwich
Camberwell Green
London Bridge

Towards Dulwich

London Bridge
Elephant and Castle
Camberwell Green

Total scheduled manual QSI surveys per quarter = 96.

8. RUNNING TIMES

Extracts from the public timetable with sample running times for Route No. 40 are attached at Appendix B. This gives an indication of the time required to travel the route. Attention is drawn to the variations in running times at different times of the day. Please refer to Section 2.8 of Part A of the Guide for Tenderers for further information.

Tenderers should carefully check the existing running times to ensure that they are appropriate in present traffic conditions.

It is expected that any changes to these running times can be accommodated within existing cycle times.

When reviewing existing, and devising new, running times Tenderers should refer to:

- the minimum performance standards for Route No. 40 in Section 7 above;
- the historical performance data provided in Section 1 Part B of the introduction to this ITT;
- the paragraph in Section 12 referring to the proposed extension of the Cashless Boarding zone throughout the whole of the London area.

Tenderers may consider if school summer holiday schedules, incorporating running time reductions, are desirable for this route. In this event, schedules and costs must be submitted separately.

9. LAYOVERS

Under normal circumstances, layover time on stands and at bus stations should be restricted to that required to provide a reliable service. Longer layovers for any other purpose may only be taken with the permission of the Corporation.

10. TIMING CONSTRAINTS

Route No. 40 should interwork with other bus services where possible.

11. CONTROL STRATEGY

Route No. 40 can suffer from the effects of traffic congestion, making some form of route control essential in order to achieve or better the minimum performance standards for this route.

Tenderers should submit proposals on the control strategy they intend to adopt and the type of control they would intend to use by completing the form provided in Section 3: Part 7 of this ITT. The cost of this control should be included within the main Tender price.

Tenderers should also indicate how they intend to facilitate driver changeovers and meal reliefs for this route.

Further information is provided in Section 2.11 of Part A of the Guide for Tenderers.

12. OPERATIONAL CONSIDERATIONS

Tenderers should note the following operating considerations affecting Route No. 40:

- Route No. 40 may suffer from unpredictable traffic delays in the Elephant & Castle and Aldgate areas.
- Route No. 40 can suffer from traffic delays in the Camberwell, East Street and Aldgate area on market days. Tenderers should bear this in mind when devising schedules.

Tenderers should also note the following factors which may have an impact on Route No. 40 in the foreseeable future:

- The upgrade of Thameslink is expected to progress during the lifetime of the contract.
- The upgrade to the East London Line is expected to be finished during the lifetime of the contract.
- A major redevelopment of the Elephant & Castle area is proposed, including a new transport interchange, bus station and major highway modifications to replace the existing roundabouts.
- The Cross River Tram Scheme (CRT) - is a proposed tram route running from Kings Cross and Camden, via Euston and Waterloo, to Peckham and Brixton. Work on this may start during the life of the contract.
- It is anticipated that Cashless Boarding will be extended throughout London at some stage during the lifetime of this contract. **This is expected to lead to significant savings in running and recovery times to bus routes, and, therefore, potential resource (cycle time and PVR) savings are expected. Tenderers are required to identify and submit the level of savings per vehicle that could be achieved by reducing peak vehicle requirement, and/or how reliability targets could be revised when the Scheme is introduced.**

The above factors have been included to assist Tenderers and represents the information currently available to the Corporation. Tenderers should make their own enquiries about events which may impact upon the route and should form their own views about their likely effect upon it.

13. STOPPING ARRANGEMENTS

Buses operating on Route No. 40 must serve all stops on the line of route designated for the route. There are two types of bus stop:

- Compulsory (white stop flag): where all buses must stop.
- Request (red stop flag): where buses are only required to stop if a passenger rings the bell or an intending passenger signals to the driver.

Tenderers should note that there are proposals (subject to consultation) to remove the distinction between compulsory and request stops. If approved, the successful Tenderer will be advised of these changes in detail.

14. TIMING POINTS & MILEAGES

Buses should be timed at the following points:

Dulwich Library

East Dulwich *Goose Green*

Camberwell Green *Denmark Hill*

Camberwell *Nags Head*

Elephant and Castle *Tabernacle*

London Bridge Station *Southwark Cathedral*

Aldgate Station

Aldgate Bus Station

London Bridge Station *London Bridge Stop Y*

Elephant and Castle *Tabernacle*

Camberwell *Nags Head*

Camberwell Green *Denmark Hill*

East Dulwich *Goose Green*

Dulwich Library

Mileages for Route No. 40

Dulwich, Library to Aldgate Station 6.2 miles

Aldgate Bus Station to Dulwich, Library 6.0 miles

Tenderers should note that:

- these measurements are believed to be accurate to within 0.5 miles, but no warranty or representation as to accuracy is given;
- out of service stand workings have not been measured and are not included within the above measurements;
- if alternative or additional measurements are used by the Tenderer, these must be stated in the tender submission;
- point to point measurements pertaining to recognised curtailment points or alternative terminals will be agreed with the successful Tenderer once the contract has been awarded.

15. VEHICLE LIVERY

All vehicles to be used on Route No. 40 from the commencement of the new Route Agreement must be in a livery that is exclusively Corporation red. The paint should be matched accurately to the colour as defined by the following manufacturer's specifications:

ICI London Bus Red P498 FPF 3

Other manufacturers should also be able to produce this specification from the ICI colour chart.

This requirement does not include the lower panels which may be in a different colour but which shall not exceed 50cm in height, or the rooftop which should be painted white so as to reduce temperatures inside the vehicle during the summer months.

The positioning and size of Operators' logos are to be agreed between the Operator and the Corporation and, where possible, these should be above the front doors on the nearside of the vehicles and above the drivers' offside cab windows.

All livery proposals must be submitted to the Contracts Tendering Manager for approval.

ROUTE No. 40: DULWICH, LIBRARY - ALDGATE STATION

STREETS TRAVERSED

Towards Aldgate Station: Etherow Street, Barry Road, Lordship Lane, Grove Vale, Dog Kennel Hill, Grove Lane, Champion Park, Denmark Hill, Camberwell Green (West Side), Camberwell Road, Walworth Road, Elephant & Castle, Newington Causeway, Borough High Street, London Bridge, King William Street, Gracechurch Street, Fenchurch Street, Aldgate, Houndsditch, St Botolph Street, Middlesex Street, Aldgate High Street, Minories.

Towards Dulwich, Library: Aldgate Bus Station, Aldgate High Street, Aldgate, Fenchurch Street, Gracechurch Street, King William Street, London Bridge, Borough High Street, Newington Causeway, Elephant & Castle, Walworth Road, Camberwell Road, Camberwell Green (West Side), Denmark Hill, Champion Park, Grove Lane, Dog Kennel Hill, Grove Vale, Lordship Lane.

STANDS, TURNING POINTS AND DESTINATION BLINDS

Tenderers should note that under normal circumstances, the specific restrictions relating to each stand will apply to the whole stand at all times. Any variation to such standing arrangements must be agreed by the Corporation. In addition, Tenderers should note the following general requirements:

- 1) Drivers MUST switch off engines during layover periods at bus stations or on stands.
- 2) No meal reliefs may be taken on any stand (on or off line of route) without the permission of the Corporation.
- 3) No crew ferry vehicles may enter any stand (on or off line of route) without the permission of the Corporation.
- 4) Destination blind displays to be used are shown under each stand description. Tenderers may suggest, within their bids, alternative blind displays.
- 5) The intermediate (also known as via) blind display to be used on the nearside of the vehicle is shown in the box below:

40 via Camberwell

For further information, please refer to Annex C of the Framework Agreement: General Conditions relating to the use of London Buses' Bus Stations and Stands.

DULWICH, ETHEROW STREET

Public stand in Etherow Street commencing 11 metres south east of a point opposite western wall of no. 259 Barry Road and extending 31.5 metres south eastwards.

Buses proceed from Lordship Lane via Friern Road and Etherow Street to stand, departing to Etherow Street. Set down in Lordship Lane, at stop DE and pick up in Etherow Street, at stop DA.

AVAILABILITY:	At any time.
OPERATING RESTRICTIONS:	No more than 2 vehicles on Route No. 40 should be scheduled to stand at any one time.
MEAL RELIEFS:	No meal relief vehicles to stand at any time.
FERRY VEHICLES:	No ferry vehicles to park on stand at any time.
OTHER INFORMATION:	261 Barry House toilet facilities available between 0600 and 2200 daily.
BLIND DISPLAY:	Dulwich Library

ELEPHANT & CASTLE, SOUTHWARK BRIDGE RD (from Dulwich, Library)

Public stand on the west side of Southwark Bridge Road, commencing 10 metres north of the centre of Keyworth Street and extending 54 metres north.

Buses proceed from Newington Causeway via Southwark Bridge Road to stand, departing via Southwark Bridge Road and Gaunt Street to Newington Causeway. Set down in Newington Causeway, at stop F and pick up in Newington Causeway, at stop G.

AVAILABILITY:	At any time.
OPERATING RESTRICTIONS:	Unscheduled curtailments only.
MEAL RELIEFS:	No meal relief vehicles to stand at any time.
FERRY VEHICLES:	No ferry vehicles to park on stand at any time.
BLIND DISPLAY:	Elephant & Castle

LONDON BRIDGE STATION

Private stand in bus station on forecourt of National Railway station.

From Dulwich, Library

Buses proceed from Borough High Street via Railway Approach and London Bridge Bus Station to stand, departing via London Bridge Bus Station and London Bridge Street to Borough High Street. Set down in Borough High Street, at stop G and pick up in Borough High Street.

From Aldgate Station

Buses proceed from London Bridge via Borough High Street, Railway Approach and London Bridge Bus Station to stand, departing via London Bridge Bus Station, London Bridge Street and Borough High Street to London Bridge. Set down in London Bridge, at stop Y and pick up in London Bridge, at stop M.

AVAILABILITY:	At any time.
OPERATING RESTRICTIONS:	Unscheduled curtailments only.
MEAL RELIEFS:	No meal relief vehicles to stand at any time.
FERRY VEHICLES:	No ferry vehicles to park on stand at any time.
BLIND DISPLAY:	London Bridge

ALDGATE BUS STATION

Private stand in bus station on south side of Aldgate High Street.

Buses proceed from Minories via Aldgate Bus Station to stand, departing to Aldgate Bus Station. Set down in Minories, at stop H and pick up in Aldgate Bus Station, at stop L.

AVAILABILITY:	At any time.
OPERATING RESTRICTIONS:	No more than 2 vehicles on Route No. 40 should be scheduled to stand at any one time.
MEAL RELIEFS:	No meal relief vehicles to stand at any time.
FERRY VEHICLES:	No ferry vehicles to park on stand at any time.
OTHER INFORMATION:	LBSL toilet facilities available 24 hours daily/.
BLIND DISPLAY:	Aldgate

APPENDIX B: SAMPLE RUNNING TIMES FOR ROUTE No. 40
(based on current schedule)

MONDAYS TO FRIDAYS

1. Dulwich, Library to Aldgate Station

	Typical early morning	Longest morning peak	Typical interpeak	Longest afternoon peak	Typical late evening
Dulwich Library	0521	0802	1206	1702	2308
East Dulwich Goose Green	0525	0811	1212	1708	2314
Camberwell Green					
<i>Denmark Hill</i>	0532	0824	1222	1717	2322
<i>Camberwell Nags Head</i>	0535	0827	1225	1720	2325
Elephant & Castle	0541	0839	1237	1730	2332
London Bridge Station					
<i>Southwark Cathedral</i>	0548	0850	1246	1739	2339
Aldgate Station	0553	0900	1255	1749	2344
	32 minutes	58 minutes	49 minutes	47 minutes	36 minutes

2. Aldgate Station to Dulwich, Library

	Typical early morning	Longest morning peak	Typical interpeak	Longest afternoon peak	Typical late evening
Aldgate Station	0450	0800	1204	1706	2310
London Bridge Station					
<i>Southwark Cathedral</i>	0456	0810	1213	1715	2316
Elephant & Castle	0502	0819	1221	1725	2323
<i>Camberwell Nags Head</i>	0509	0829	1234	1739	2330
Camberwell Green					
<i>Denmark Hill</i>	0510	0831	1236	1741	2332
East Dulwich Goose Green	0516	0839	1247	1753	2339
Dulwich Library	0520	0845	1253	1801	2344
	30 minutes	45 minutes	49 minutes	55 minutes	34 minutes

SATURDAYS1. Dulwich, Library to Aldgate Station

	Typical early morning	Typical late AM shopping period	Typical PM shopping period	Typical late evening
Dulwich Library	0512	1102	1302	2308
East Dulwich <i>Goose Green</i>	0516	1108	1308	2314
Camberwell Green				
<i>Denmark Hill</i>	0523	1118	1318	2322
Camberwell <i>Nags Head</i>	0526	1121	1321	2325
Elephant & Castle	0532	1130	1330	2332
London Bridge Station <i>Southwark Cathedral</i>	0539	1137	1337	2339
Aldgate Station	0544	1144	1344	2344
	32 minutes	42 minutes	42 minutes	36 minutes

2. Aldgate Station to Dulwich, Library

	Typical early morning	Typical late AM shopping period	Typical PM shopping period	Typical late evening
Aldgate Station	0505	1055	1255	2310
London Bridge Station <i>Southwark Cathedral</i>	0511	1102	1302	2316
Elephant & Castle	0517	1109	1309	2323
Camberwell <i>Nags Head</i>	0524	1121	1321	2330
Camberwell Green				
<i>Denmark Hill</i>	0525	1123	1323	2332
East Dulwich <i>Goose Green</i>	0531	1133	1333	2339
Dulwich Library	0535	1139	1339	2344
	30 minutes	44 minutes	44 minutes	34 minutes

SUNDAYS**1. Dulwich, Library to Aldgate Station**

	Typical early morning	Typical late AM shopping period	Typical PM shopping period	Typical late evening
Dulwich Library	0523	1101	1301	2308
East Dulwich <i>Goose Green</i>	0527	1107	1307	2314
Camberwell Green				
<i>Denmark Hill</i>	0534	1115	1315	2322
Camberwell <i>Nags Head</i>	0537	1118	1318	2325
Elephant & Castle	0543	1127	1327	2332
London Bridge Station <i>Southwark</i>				
<i>Cathedral</i>	0550	1134	1334	2339
Aldgate Station	0555	1144	1344	2344
	32 minutes	43 minutes	43 minutes	36 minutes

2. Aldgate Station to Dulwich, Library

	Typical early morning	Typical late AM shopping period	Typical PM shopping period	Typical late evening
Aldgate Station	0600	1055	1310	2255
London Bridge Station <i>Southwark</i>				
<i>Cathedral</i>	0606	1102	1317	2301
Elephant & Castle	0612	1109	1324	2308
Camberwell <i>Nags Head</i>	0619	1120	1335	2315
Camberwell Green				
<i>Denmark Hill</i>	0620	1122	1337	2317
East Dulwich <i>Goose Green</i>	0626	1130	1345	2325
Dulwich Library	0630	1135	1350	2330
	30 minutes	40 minutes	40 minutes	35 minutes

The above tables have been included to assist Tenderers. They represent the information currently available to the Corporation. Tenderers should form their own views about what is appropriate in terms of running times. (See Section 8.)