

CONTRACT SPECIFICATION

Tenders are requested for the following contract to operate a bus service.

Contract Reference	QC37801
Route Number	19/N19
Terminus Points	Route No. 19 - Finsbury Park Station to Battersea Bridge Route No. N19 - Finsbury Park Station to Clapham Junction, St Johns Hill
Contract Basis	Incentivised
Commencement Date	31 st March 2012
Vehicle Type	87 capacity, dual door, double deck vehicles
Maximum Approved Dimensions	10.3 metres long and 2.55 metres wide
Advertising Rights	Operator
Sponsored Route	No
Minimum Performance Std - Route No. 19	Average Excess Wait Time - No more than 1.30 minutes
Extension Threshold - Route No. 19	Average Excess Wait Time Threshold - 1.15 minutes
Minimum Operated Mileage - Route No. 19	No less than 98.00%
Departing on Time - Route No. N19	Departing on Time Threshold - 85.00%
Minimum Operated Mileage - Route No. N19	No less than 99.00%

Tender Return Date: No later than 12 o'clock on 4th April 2011

SERVICE SPECIFICATION

CONTENTS

- 1) NOTES
- 2) SCHEDULE REQUIREMENTS & PINCHPOINTS
- 3) QSI POINTS & MILEAGE
- 4) OPERATIONAL CONSIDERATIONS
- 5) CURRENT PERFORMANCE, ROUTE RECORD & IBUS MILEAGE

1) NOTES

Proposed Changes:

At this time, the Corporation expects to implement a change to the existing service prior to the commencement of the new Route Agreement for Route Nos. 19 & N19.

- From 26th February 2011, due to the closure of the new and existing contraflow bus lanes at Piccadilly, Route Nos 19 & N19 are diverted ex Finsbury Park Station from Shaftesbury Avenue via Great Windmill Street, Haymarket, Pall Mall and St James Street to Piccadilly to rejoin the normal line of routeing. This diversion is expected to end on 28th May 2011.

Tenderers should note that the following alterations (subject to consultation) are proposed as part of this Service Specification for introduction with the new Route Agreement:

- Mondays to Fridays AM peak frequencies are reduced from every 6 minutes to every 7-8 minutes (8 buses per hour).
- Mondays to Fridays interpeak frequencies are reduced from every 6-7 minutes (9 buses per hour) to every 7-8 minutes (8 buses per hour).
- Mondays to Fridays PM peak frequencies are reduced from every 6-7 minutes (9 buses per hour) to every 7-8 minutes (8 buses per hour).
- Ex Finsbury Park Station, two peak flow journeys are specified during Mondays to Fridays AM peak to provide a frequency of every 6 minutes between 0745 and 0845.
- Weekend night frequencies are increased from every 30 minutes to every 20 minutes.
- **Tenderers must identify the cost of the Nightly element of this service separately.**

2) SCHEDULE REQUIREMENTS & PINCHPOINTS

2.1) MONDAY TO FRIDAY SCHEDULE REQUIREMENTS & PINCHPOINTS

Finsbury Park Station to Battersea Bridge			Battersea Bridge to Finsbury Park Station		
First departure no later than 0525.			First departure no later than 0530.		
0520 - 0625	Every 10 minutes		0525 - 0540	Every 10 minutes	
0626 - 0650	Every 8 minutes		0541 - 0610	Every 8 minutes	
0651 - 0745	Every 7-8 minutes (8 buses per hour)		0611 - 1915	Every 7-8 minutes	
0746 - 0845	Every 6 minutes		1916 - 1945	Every 8 minutes	
0846 - 2050	Every 7-8 minutes (8 buses per hour)		1946 - 0025	Every 10 minutes	
2051 - 2140	Every 8 minutes				
2141 - 2350	Every 10 minutes				
2351 - 0030	Every 12 minutes				
Last departure no earlier than 0025.			Last departure no earlier than 0020.		
Pinchpoints					
Cambridge Circus, Shaftesbury Avenue	0730 - 0825	8 minutes	Bloomsbury Square	0720 - 0920	8 minutes
	0826 - 0900	6 minutes		1450 - 1650	8 minutes
	1515 - 1715	8 minutes			

2.2) SATURDAY AND GOOD FRIDAY SCHEDULE REQUIREMENTS & PINCHPOINTS

Finsbury Park Station to Battersea Bridge			Battersea Bridge to Finsbury Park Station		
First departure no later than 0525.			First departure no later than 0530.		
0520 - 0800	Every 12 minutes		0525 - 0620	Every 12 minutes	
0801 - 0900	Every 10 minutes		0621 - 0750	Every 10 minutes	
0901 - 2020	Every 7-8 minutes (8 buses per hour)		0751 - 1835	Every 7-8 minutes (8 buses per hour)	
2021 - 2350	Every 10 minutes		1836 - 0025	Every 10 minutes	
2351 - 0030	Every 12 minutes				
Last departure no earlier than 0025.			Last departure no earlier than 0020.		
Pinchpoints					
Cambridge Circus, Shaftesbury Avenue	0930 - 1130	8 minutes	Bloomsbury Square	0925 - 1105	8 minutes

2.3) SUNDAY AND PUBLIC HOLIDAY SCHEDULE REQUIREMENTS & PINCHPOINTS

Finsbury Park Station to Battersea Bridge			Battersea Bridge to Finsbury Park Station		
First departure no later than 0525.			First departure no later than 0530.		
0520 - 1000	Every 15 minutes		0525 - 0800	Every 15 minutes	
1001 - 2350	Every 10 minutes		0801 - 0850	Every 12 minutes	
2351 - 0030	Every 12 minutes		0851 - 0025	Every 10 minutes	
Last departure no earlier than 0025.			Last departure no earlier than 0020.		
Pinchpoints					
Cambridge Circus, Shaftesbury Avenue	1040 - 1140	10 minutes	Bloomsbury Square	1025 - 1125	10 minutes

2.4) BOXING DAY SCHEDULE REQUIREMENTS & PINCHPOINTS

Finsbury Park Station to Battersea Bridge			Battersea Bridge to Finsbury Park Station		
First departure no later than 0825.			First departure no later than 0800.		
0820 - 1000	Every 15 minutes		0755 - 0850	Every 12 minutes	
1001 - 2350	Every 10 minutes		0851 - 0025	Every 10 minutes	
2351 - 0030	Every 12 minutes				
Last departure no earlier than 0025.			Last departure no earlier than 0020.		
Pinchpoints					
Cambridge Circus, Shaftesbury Avenue	1040 - 1140	10 minutes	Bloomsbury Square	1025 - 1125	10 minutes

2.5) SUNDAY NIGHTS/MONDAY MORNINGS TO THURSDAY NIGHTS/FRIDAY MORNINGS SCHEDULE REQUIREMENTS & PINCHPOINTS

Finsbury Park Station to Clapham Junction, St Johns Hill		Clapham Junction, St Johns Hill to Finsbury Park Station	
First departure no later than 0040.		First departure no later than 0040.	
0035 - 0515	Every 30 minutes	0035 - 0515	Every 30 minutes
Last departure no earlier than 0510.		Last departure no earlier than 0510.	

Tenderers must identify the cost of the Nightly element of this service separately.

2.6) FRIDAY NIGHTS/SATURDAY MORNINGS TO SATURDAY NIGHTS/SUNDAY MORNINGS SCHEDULE REQUIREMENTS & PINCHPOINTS

Finsbury Park Station to Clapham Junction, St Johns Hill		Clapham Junction, St Johns Hill to Finsbury Park Station	
First departure no later than 0045.		First departure no later than 0030.	
0040 - 0510	Every 20 minutes	0025 - 0515	Every 20 minutes
Last departure no earlier than 0505.		Last departure no earlier than 0510.	

Tenderers must identify the cost of the Nightly element of this service separately.

3) QSI POINTS & MILEAGE

It is intended Route No. 19 will have 128 surveys per quarter at the following locations:

QSI POINTS	
<i>Towards Battersea Bridge</i>	<i>Towards Finsbury Park</i>
Finsbury Park	Battersea Bridge
Angel Islington	Hyde Park Corner
Tottenham Court Road	Tottenham Court Road
Sloane Square	Angel Islington
MILEAGE: See Attached iBus Sheets	

\$ This location observed simultaneously in both directions - counted as two surveys.

It is unlikely that the minimum number of QSI surveys for Threshold measurement will be conducted on Route No. N19 at present. However, this may change at a later date when a Threshold figure may be published.

4) OPERATIONAL CONSIDERATIONS

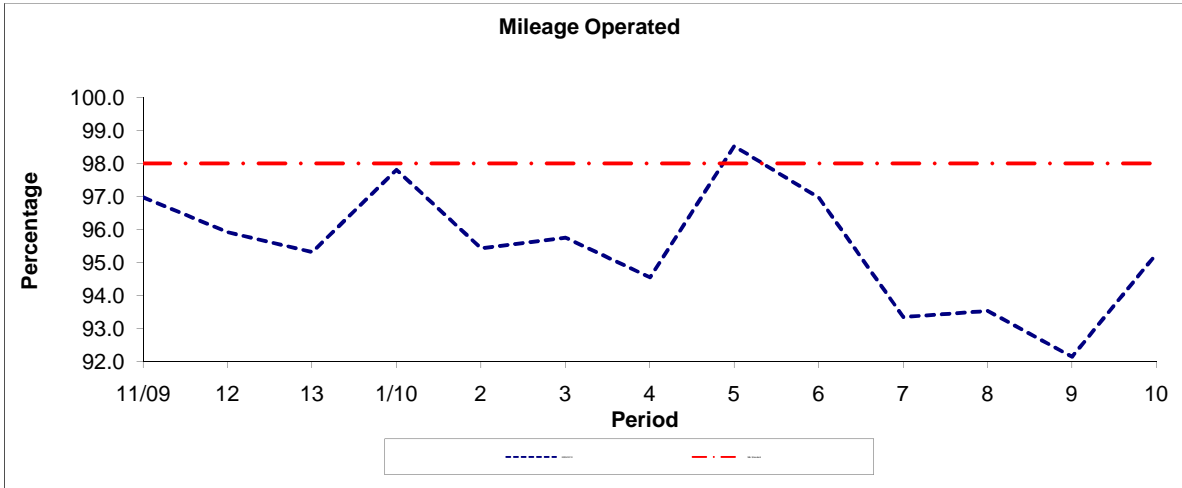
- 4.1) Route No. 19 should interwork with Route No. N19 to form a seamless service between Finsbury Park Station and Battersea Bridge.
- 4.2) When compiling schedules Tenderers are asked to consider passengers making connections to other services at the following location/s:
Finsbury Park Station.
- 4.3) Route Nos. 19 & N19 can suffer from unpredictable delays throughout the length of the routes, particularly during peak periods.
- 4.4) Route No. 19 can suffer from major disruptions in the Finsbury Park area during home matches of Arsenal Football Club.
- 4.5) **Under no circumstances must double deck buses be taken along Stroud Green Road south of the junction with Morris Place due to a low railway bridge. Buses must not turn right out of Finsbury Park Bus Station.**
- 4.6) Crossrail will connect the City, Canary Wharf, the West End and Heathrow Airport to commuter areas east and west of the capital. Major construction of the railway began in 2010, with services expected to commence in 2018. The construction impacts of Crossrail could affect Route Nos. 19 & N19 and it is anticipated that some passenger demand for Route Nos. 19 & N19 would shift to this line when it opens. Route Nos. 19 & N19 will be reviewed closer to the opening date.
- 4.7) The 2012 Olympic Games open on Friday 27th July and close on Sunday 12th August. The 2012 Paralympic Games start on Wednesday 29th August and close on Sunday 9th September. The Games will result in additional passenger demand across the network, requiring additional capacity on some routes. There will also be a number of road closures in the event areas resulting in route diversions. Operators should be aware there will be implications to them during this time. Full details and any extra resource required will be negotiated with the operator at a later date.

5) CURRENT PERFORMANCE, ROUTE RECORD & IBUS MILEAGE

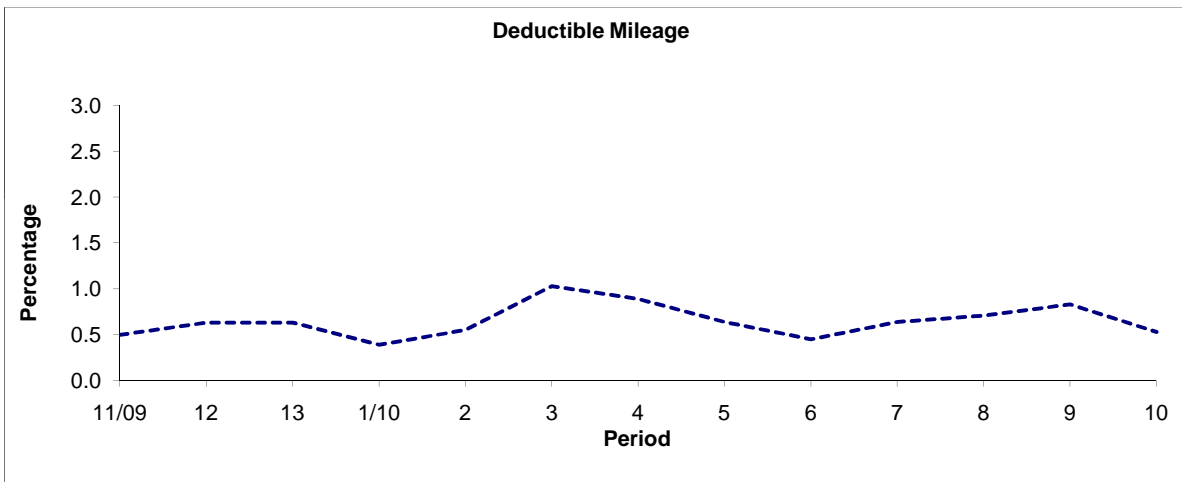
- 5.1) CURRENT PERFORMANCE
As per current print out.
- 5.2) ROUTE RECORD
As per Busnet Printout.
- 5.3) IBUS MILEAGE
As per current print out.

PART B - PERFORMANCE STATISTICS

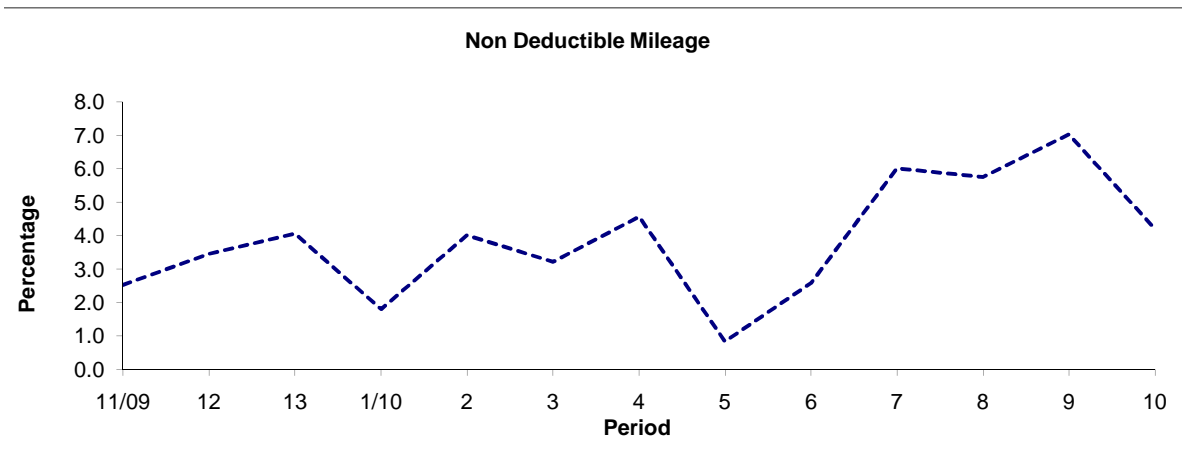
Route 19



Period	11/09	12	13	1/10	2	3	4	5	6	7	8	9	10
2009/2010	96.97	95.91	95.31	97.80	95.43	95.75	94.54	98.52	96.96	93.34	93.53	92.14	95.26
Min Standard	98.00	98.00	98.00	98.00	98.00	98.00	98.00	98.00	98.00	98.00	98.00	98.00	98.00



Period	11/09	12	13	1/10	2	3	4	5	6	7	8	9	10
2009/2010	0.50	0.63	0.63	0.39	0.55	1.03	0.89	0.64	0.45	0.64	0.71	0.83	0.53

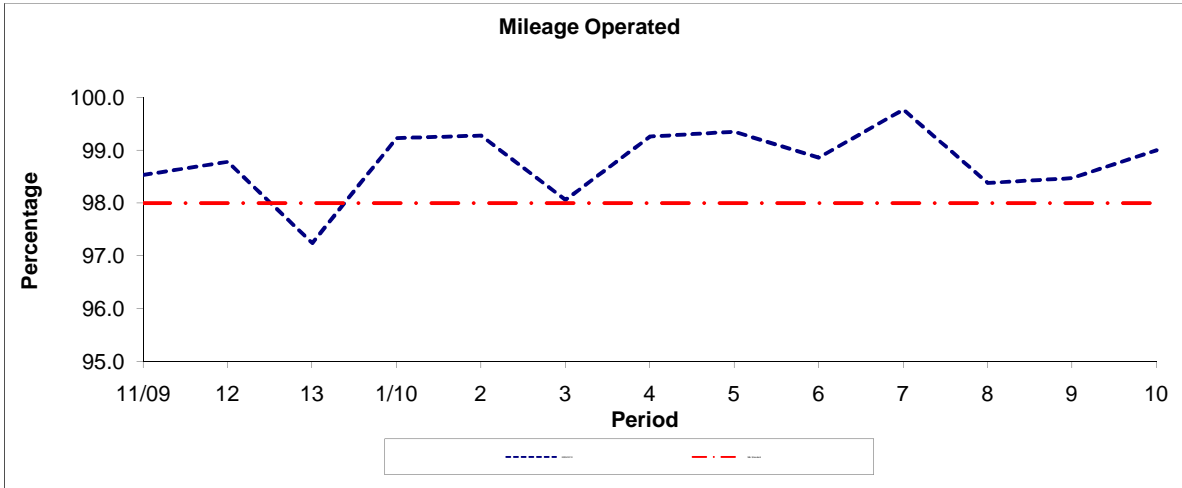


Period	11/09	12	13	1/10	2	3	4	5	6	7	8	9	10
2009/2010	2.53	3.46	4.06	1.81	4.02	3.22	4.57	0.84	2.59	6.02	5.76	7.03	4.21

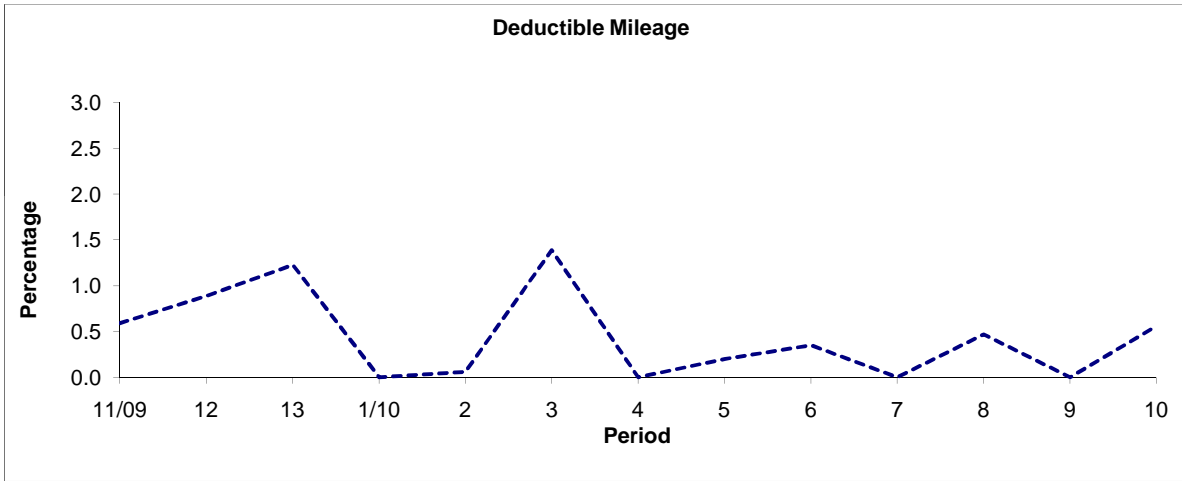
Note : Mileage is based on 4 weeks data

PART B - PERFORMANCE STATISTICS

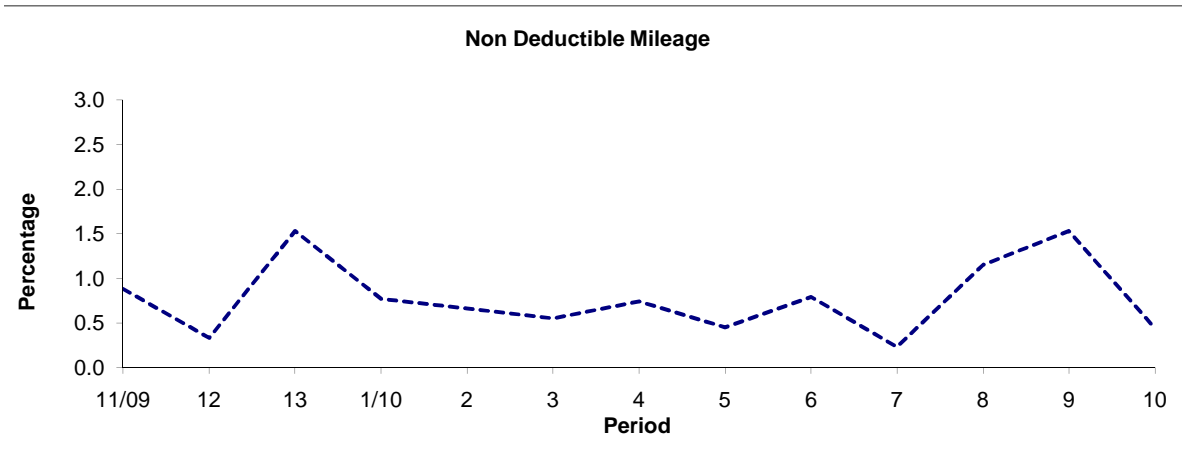
Route N19



Period	11/09	12	13	1/10	2	3	4	5	6	7	8	9	10
2009/2010	98.53	98.78	97.24	99.23	99.28	98.06	99.26	99.35	98.86	99.77	98.38	98.47	99.00
Min Standard	98.00	98.00	98.00	98.00	98.00	98.00	98.00	98.00	98.00	98.00	98.00	98.00	98.00



Period	11/09	12	13	1/10	2	3	4	5	6	7	8	9	10
2009/2010	0.59	0.89	1.23	0.00	0.06	1.39	0.00	0.20	0.35	0.00	0.47	0.00	0.56

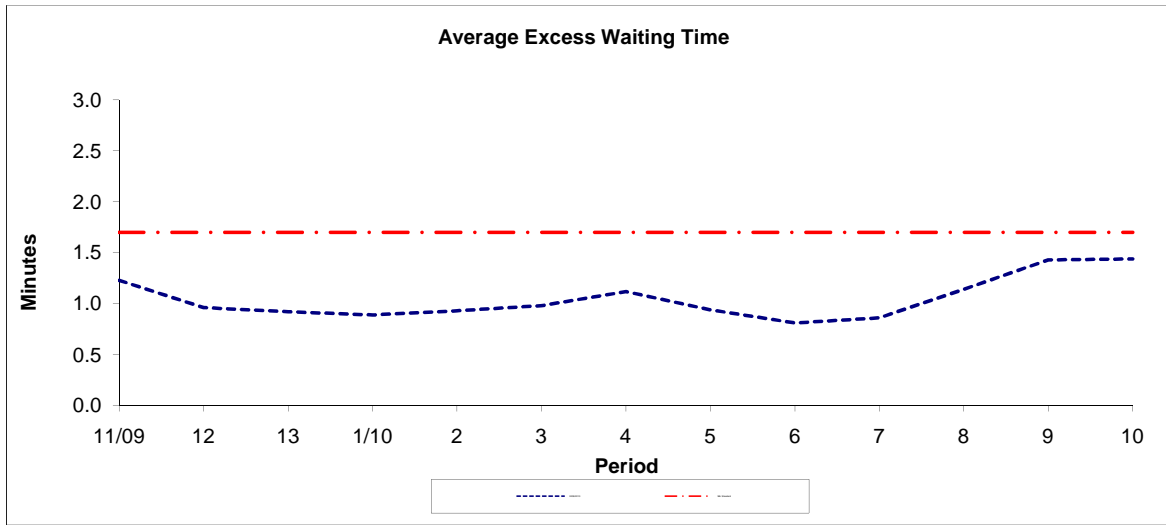


Period	11/09	12	13	1/10	2	3	4	5	6	7	8	9	10
2009/2010	0.88	0.33	1.53	0.77	0.66	0.55	0.74	0.45	0.79	0.23	1.15	1.53	0.44

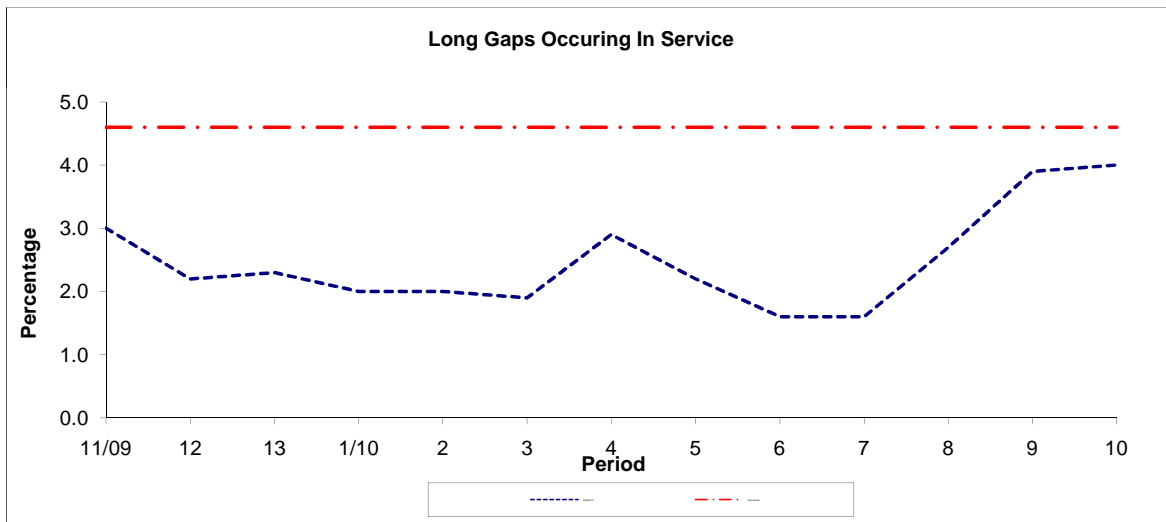
Note : Mileage is based on 4 weeks data

PART B - PERFORMANCE STATISTICS

Route 19



Period	11/09	12	13	1/10	2	3	4	5	6	7	8	9	10
2009/2010	1.23	0.96	0.92	0.89	0.93	0.98	1.12	0.94	0.81	0.86	1.14	1.43	1.44
Min Standard	1.70	1.70	1.70	1.70	1.70	1.70	1.70	1.70	1.70	1.70	1.70	1.70	1.70

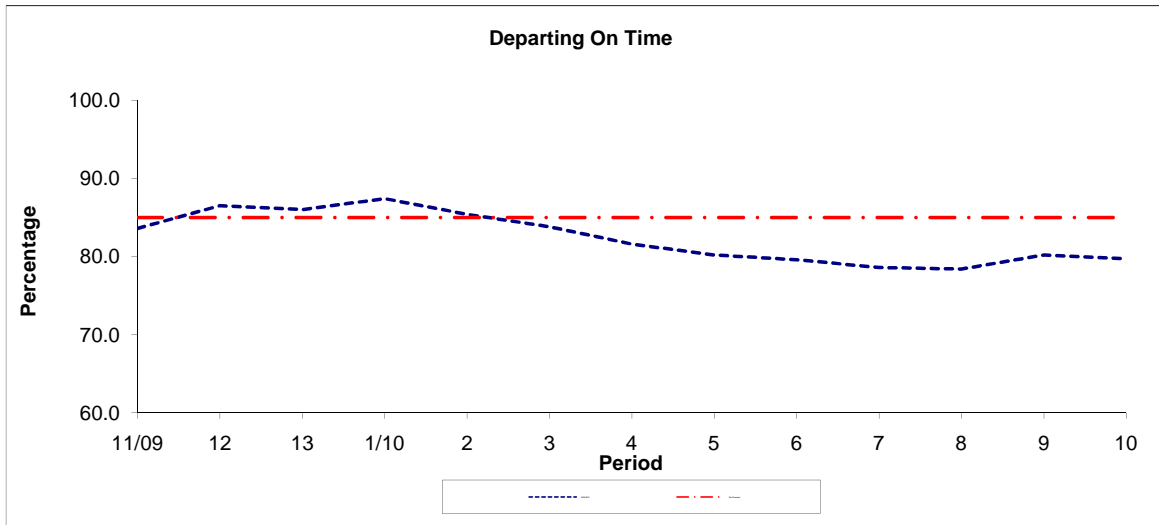


Period	11/09	12	13	1/10	2	3	4	5	6	7	8	9	10
2009/2010	3.00	2.20	2.30	2.00	2.00	1.90	2.90	2.20	1.60	1.60	2.70	3.90	4.00
Benchmark	4.60	4.60	4.60	4.60	4.60	4.60	4.60	4.60	4.60	4.60	4.60	4.60	4.60

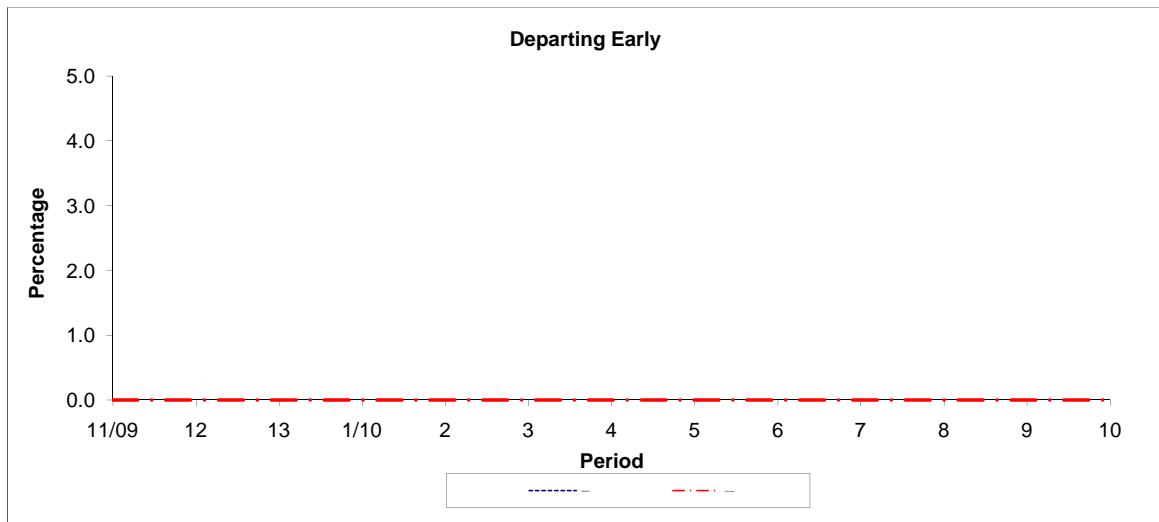
Note : Reliability is based on 12 weeks rolling data

PART B - PERFORMANCE STATISTICS

Route N19



Period	11/09	12	13	1/10	2	3	4	5	6	7	8	9	10
2009/2010	83.60	86.50	86.00	87.40	85.40	83.80	81.60	80.20	79.60	78.60	78.40	80.20	79.70
Min Standard	85.00	85.00	85.00	85.00	85.00	85.00	85.00	85.00	85.00	85.00	85.00	85.00	85.00



Period	11/09	12	13	1/10	2	3	4	5	6	7	8	9	10
2009/2010													
Benchmark	0.00	0.00	0.00	0.00	0.00	0.00	0.00	0.00	0.00	0.00	0.00	0.00	0.00

Note : Reliability is based on 12 weeks rolling data

LONDON BUSES - ROUTE DESCRIPTION

ROUTE 19: Finsbury Park Station - Battersea Bridge

Date of Structural Change: 3 March 2012.

Date of Service Change: 3 March 2012.

Reason for Issue: New Tender.

STREETS TRAVERSED

Towards Battersea Bridge: Station Place, Stroud Green Road, Seven Sisters Road, Blackstock Road, Highbury Park, Highbury Grove, St Paul's Road, Highbury Corner, Upper Street, Islington High Street, St John Street, Rosebery Avenue, Clerkenwell Road, Theobald's Road, Theobald's Road Contra-Flow Bus Lane, Bloomsbury Way Contra-Flow Bus Lane, New Oxford Street, Shaftesbury Avenue, High Holborn, Shaftesbury Avenue, Shaftesbury Avenue Contra-Flow Bus Lane, Piccadilly Contra-Flow Bus Lane, Piccadilly, Duke Of Wellington Place, Grosvenor Place, Knightsbridge, Sloane Street, Sloane Square, King's Road, Beaufort Street, Battersea Bridge, Battersea Bridge Road.

Towards Finsbury Park Station: Battersea Bridge Road, Battersea Bridge, Beaufort Street, King's Road, Sloane Square (West And North Sides), Sloane Street, Knightsbridge, Hyde Park Corner, Piccadilly, Piccadilly Circus, Shaftesbury Avenue, Charing Cross Road, New Oxford Street, Bloomsbury Way, Vernon Place, Theobald's Road, Clerkenwell Road, Rosebery Avenue, St John Street, Islington High Street, Upper Street, Highbury Corner, St Paul's Road, Highbury Grove, Highbury Park, Blackstock Road, Rock Street, St Thomas's Road, Station Place.

STANDING AND TURNING POINTS

FINSBURY PARK STATION, STATION PLACE, CENTRE STAND

Private stand for 3 buses in marked bay in centre of Station Place commencing opposite and 5 metres north of passenger entrance to National Rail Station and extending 33.4 metres south.

Buses proceed from Station Place direct to stand, departing to Station Place. Set down in Station Place, at Alighting Point and pick up in Station Place, at Stop G.

AVAILABILITY:	At any time.
OPERATING RESTRICTIONS:	No more than 3 buses on Route 19 should be scheduled to stand at any one time.
MEAL RELIEFS:	No meal relief vehicles to stand at any time.
FERRY VEHICLES:	No ferry vehicles to park on stand at any time.
DISPLAY:	Finsbury Park Station.
OTHER INFORMATION:	Toilet facilities available in LUL Station.

HIGHBURY BARN (from BATTERSEA BRIDGE)

Public stand for one bus on the east side of Highbury Hill, commencing at a point 6 metres north of the lamp post in line with the north building line of Christ Church and extending 12 metres north.

Buses proceed from Highbury Grove via Highbury Hill to stand, departing via Highbury Hill and Leigh Road to Highbury Grove. Set down in Highbury Grove, at Stop CX and pick up in Highbury Grove, at Stop EE.

AVAILABILITY:	At any time.
OPERATING RESTRICTIONS:	Unscheduled curtailments only.
MEAL RELIEFS:	No meal relief vehicles to stand at any time.
FERRY VEHICLES:	No ferry vehicles to park on stand at any time.
DISPLAY:	Highbury Barn.

HIGHBURY & ISLINGTON STATION (from BATTERSEA BRIDGE)

Buses proceed from Upper Street via Highbury Corner departing to Upper Street. Set down in Upper Street, at Stop F and pick up in Upper Street, at Stop G.

AVAILABILITY:	At any time.
OPERATING RESTRICTIONS:	Turning Point Only - Buses must not stand
DISPLAY:	Highbury & Islington.

ISLINGTON GREEN, ESSEX ROAD (from BATTERSEA BRIDGE)

Buses proceed from Upper Street via Islington Green, Essex Road and Cross Street departing to Upper Street. Set down in Islington Green, at stop AP and pick up in Upper Street, at stop N.

AVAILABILITY: At any time.
OPERATING RESTRICTIONS: **Turning Point Only - Buses must not stand**
DISPLAY: Islington Green.

ROSEBERY AVENUE

Public stand for one bus on south side of Green Terrace, commencing 15 metres west of Gloucester Way and extending 12 metres east.

From Battersea Bridge.

Buses proceed from Rosebery Avenue via Gloucester Way and Green Terrace to stand, departing via Green Terrace to Rosebery Avenue. Set down in Rosebery Avenue, at Stop UA and pick up in Rosebery Avenue, at Stop UD.

From Finsbury Park Station.

Buses proceed from Rosebery Avenue via Gloucester Way and Green Terrace to stand, departing via Green Terrace to Rosebery Avenue. Set down in Rosebery Avenue, at Stop UC and pick up in Rosebery Avenue, at Stop UA.

AVAILABILITY: Available from 08:00 until 18:30 only. Buses on Route 19 must not use this stand outside these times.
OPERATING RESTRICTIONS: Unscheduled curtailments only.
MEAL RELIEFS: No meal relief vehicles to stand at any time.
FERRY VEHICLES: No ferry vehicles to park on stand at any time.
DISPLAY: Rosebery Avenue.

BLOOMSBURY (from BATTERSEA BRIDGE)

Buses proceed from Bloomsbury Way via Vernon Place, Theobald's Road, Drake Street and Procter Street departing to High Holborn. Set down in Bloomsbury Way, at stop X and pick up in High Holborn, at stop Q.

AVAILABILITY: At any time.
OPERATING RESTRICTIONS: **Turning Point Only - Buses must not stand**
DISPLAY: Holborn.

HOLBORN, PROCTER STREET [WEST SIDE] (from Finsbury Park Station)

Public stand for three buses on west side (offside) of Procter Street commencing 2 metres north of Fisher Street. extending 39 metres north.

Buses proceed from Theobald's Road via Drake Street and Procter Street to stand, departing via Procter Street, High Holborn, Southampton Row and Vernon Place to Theobald's Road. Set down in Theobald's Road, at Stop A and pick up in Theobald's Road, at Stop G.

AVAILABILITY: At any time.
OPERATING RESTRICTIONS: Unscheduled curtailments only
MEAL RELIEFS: No meal relief vehicles to stand at any time.
FERRY VEHICLES: No ferry vehicles to park on stand at any time.
DISPLAY: Holborn.

PICCADILLY CIRCUS, WATERLOO PLACE, ST JAMES

Public stand for two buses on west side of Waterloo Place, commencing 9 metres south of lamp standard No.3 and extending 25 metres south.

From Battersea Bridge.

Buses proceed from Piccadilly via Piccadilly Circus, Haymarket, Pall Mall and Waterloo Place to stand, departing via Waterloo Place and Regent Street to Piccadilly. Set down in Piccadilly, at Stop B and pick up in Piccadilly Contra-flow Bus Lane, at Stop S.

From Finsbury Park Station.

Buses proceed from Shaftesbury Avenue via Great Windmill Street, Haymarket, Pall Mall and Waterloo Place to stand, departing via Waterloo Place, Regent Street and Piccadilly Circus to Shaftesbury Avenue. Set down in Shaftesbury Avenue, at Stop K and pick up in Shaftesbury Avenue, at Stop H.

AVAILABILITY: At any time.
OPERATING RESTRICTIONS: Unscheduled curtailments only.
MEAL RELIEFS: No meal relief vehicles to stand at any time.
FERRY VEHICLES: No ferry vehicles to park on stand at any time.
DISPLAY: Piccadilly Circus.

HYDE PARK CORNER, PICCADILLY (from Finsbury Park Station)

Public stand for one bus in first marked bus stand cage on south side of Piccadilly, westbound carriage way, commencing at a point opposite Nos. 128/134 Piccadilly and extending 18.5 metres east.

Drivers should take care not to use the tour bus stands forward of this stand. Buses proceed from Piccadilly direct to stand, departing via Piccadilly, Duke Of Wellington Place, Grosvenor Place and Hyde Park Corner to Piccadilly. Set down in Piccadilly, at Stop E and pick up in Piccadilly, at Stop D.

AVAILABILITY: At any time.
OPERATING RESTRICTIONS: Unscheduled curtailments only.
MEAL RELIEFS: No meal relief vehicles to stand at any time.
FERRY VEHICLES: No ferry vehicles to park on stand at any time.
DISPLAY: Hyde Park Corner.

HYDE PARK CORNER, ACHILLES WAY (from BATTERSEA BRIDGE)

Public stand for two buses on the south side (offside) of Achilles Way, commencing 18 metres west of the southbound carriage way of Park Lane and extending 20 metres west. Buses proceed from Knightsbridge via Hyde Park Corner, Park Lane (Northbound) and Achilles Way to stand, departing via Achilles Way, Park Lane (Southbound), Hyde Park Corner, Duke Of Wellington Place and Grosvenor Place to Knightsbridge. Set down in Knightsbridge, at Stop T and pick up in Knightsbridge, at Stop P.

AVAILABILITY: At any time.
OPERATING RESTRICTIONS: Unscheduled curtailments only.
MEAL RELIEFS: No meal relief vehicles to stand at any time.
FERRY VEHICLES: No ferry vehicles to park on stand at any time.
DISPLAY: Hyde Park Corner.

SLOANE SQUARE

From Battersea Bridge.

Buses proceed from King's Road departing to Sloane Square. Set down in King's Road, at Stop E and pick up in Sloane Square, at Stop H.

From Finsbury Park Station.

Buses proceed from Sloane Street via Sloane Square departing to Sloane Street. Set down in Sloane Street, at Stop C and pick up in Sloane Street, at Stop A.

AVAILABILITY: At any time.
OPERATING RESTRICTIONS: **Turning Point Only - Buses must not stand**
DISPLAY: Sloane Square.

BATTERSEA BRIDGE ROAD, ELCHO STREET

Public stand for four buses on west side of Elcho Street, commencing 2 metres south of Howie Street and extending 52 metres south.

Buses proceed from Battersea Bridge Road via Parkgate Road and Elcho Street to stand, departing via Elcho Street and Howie Street to Battersea Bridge Road. Set down in Battersea Bridge Road, at Stop BE and pick up in Battersea Bridge Road, at Stop BL.

AVAILABILITY:	At any time.
OPERATING RESTRICTIONS:	No more than 3 buses on Route 19 should be scheduled to stand at any one time.
MEAL RELIEFS:	No meal relief vehicles to stand at any time.
FERRY VEHICLES:	No ferry vehicles to park on stand at any time.
DISPLAY:	Battersea Bridge, South Side.
OTHER INFORMATION:	No toilet facilities available.

LONDON BUSES - ROUTE DESCRIPTION

ROUTE N19: Finsbury Park Station - Clapham Junction, St Johns Hill

Date of Structural Change: 3 March 2012.

Date of Service Change: 3 March 2012.

Reason for Issue: New Tender.

STREETS TRAVERSED

Towards Clapham Junction, St Johns Hill: Station Place, Stroud Green Road, Seven Sisters Road, Blackstock Road, Highbury Park, Highbury Grove, St Paul's Road, Highbury Corner, Upper Street, Islington High Street, St John Street, Rosebery Avenue, Clerkenwell Road, Theobald's Road, Theobald's Road Contra-Flow Bus Lane, Bloomsbury Way Contra-Flow Bus Lane, New Oxford Street, Shaftesbury Avenue, High Holborn, Shaftesbury Avenue, Shaftesbury Avenue Contra-Flow Bus Lane, Piccadilly Contra-Flow Bus Lane, Piccadilly, Duke Of Wellington Place, Grosvenor Place, Knightsbridge, Sloane Street, Sloane Square, King's Road, Beaufort Street, Battersea Bridge, Battersea Bridge Road, Prince Of Wales Drive, Albert Bridge Road, Battersea Park Road, Falcon Road, St John's Hill.

Towards Finsbury Park Station: Falcon Road, Battersea Park Road, Battersea Bridge Road, Battersea Bridge, Beaufort Street, King's Road, Sloane Square, Sloane Street, Knightsbridge, Hyde Park Corner, Piccadilly, Piccadilly Circus, Shaftesbury Avenue, Charing Cross Road, New Oxford Street, Bloomsbury Way, Vernon Place, Theobald's Road, Clerkenwell Road, Rosebery Avenue, St John Street, Islington High Street, Upper Street, Highbury Corner, St Paul's Road, Highbury Grove, Highbury Park, Blackstock Road, Rock Street, St Thomas's Road, Station Place.

STANDING AND TURNING POINTS

FINSBURY PARK STATION, STATION PLACE, CENTRE STAND

Private stand for 3 buses in marked bay in centre of Station Place commencing opposite and 5 metres north of passenger entrance to National Rail Station and extending 33.4 metres south.

Buses proceed from Station Place direct to stand, departing to Station Place. Set down in Station Place, at Alighting Point and pick up in Station Place, at Stop G.

AVAILABILITY:	At any time.
OPERATING RESTRICTIONS:	No more than 1 bus on Route N19 should be scheduled to stand at any one time.
MEAL RELIEFS:	No meal relief vehicles to stand at any time.
FERRY VEHICLES:	No ferry vehicles to park on stand at any time.
DISPLAY:	Finsbury Park Station.
OTHER INFORMATION:	Toilet facilities available in LUL Station.

HIGHBURY BARN (from CLAPHAM JUNCTION, ST JOHNS HILL)

Public stand for one bus on the east side of Highbury Hill, commencing at a point 6 metres north of the lamp post in line with the north building line of Christ Church and extending 12 metres north.

Buses proceed from Highbury Grove via Highbury Hill to stand, departing via Highbury Hill and Leigh Road to Highbury Grove. Set down in Highbury Grove, at Stop CX and pick up in Highbury Grove, at Stop EE.

AVAILABILITY:	At any time.
OPERATING RESTRICTIONS:	Unscheduled curtailments only.
MEAL RELIEFS:	No meal relief vehicles to stand at any time.
FERRY VEHICLES:	No ferry vehicles to park on stand at any time.
DISPLAY:	Highbury Barn.

HIGHBURY & ISLINGTON STATION (from CLAPHAM JUNCTION, ST JOHNS HILL)

Public stand for two buses on east side of Highbury Corner commencing 37 metres south of the southern kerb line of St Paul's Road and extending 22 metres north.

Buses proceed from Upper Street via Highbury Corner to stand, departing via Highbury Corner to Upper Street. Set down in Upper Street, at Stop F and pick up in Upper Street, at Stop G.

AVAILABILITY:	At any time.
OPERATING RESTRICTIONS:	Unscheduled curtailments only
MEAL RELIEFS:	No meal relief vehicles to stand at any time.
FERRY VEHICLES:	No ferry vehicles to park on stand at any time.
DISPLAY:	Highbury & Islington.

ISLINGTON GREEN, ESSEX ROAD (from CLAPHAM JUNCTION, ST JOHNS HILL)

Buses proceed from Upper Street via Islington Green, Essex Road and Cross Street departing to Upper Street. Set down in Islington Green, at stop AP and pick up in Upper Street, at stop N.

AVAILABILITY: At any time.
OPERATING RESTRICTIONS: **Turning Point Only - Buses must not stand**
DISPLAY: Islington Green.

ROSEBERY AVENUE

Public stand for one bus on south side of Green Terrace, commencing 15 metres west of Gloucester Way and extending 12 metres east.

From Clapham Junction, St Johns Hill.

Buses proceed from Rosebery Avenue via Gloucester Way and Green Terrace to stand, departing via Green Terrace to Rosebery Avenue. Set down in Rosebery Avenue, at Stop UA and pick up in Rosebery Avenue, at Stop UD.

From Finsbury Park Station.

Buses proceed from Rosebery Avenue via Gloucester Way and Green Terrace to stand, departing via Green Terrace to Rosebery Avenue. Set down in Rosebery Avenue, at Stop UC and pick up in Rosebery Avenue, at Stop UA.

AVAILABILITY: Available from 08:00 until 08:30 only. Buses on Route N19 must not use this stand outside these times.
OPERATING RESTRICTIONS: Unscheduled curtailments only.
MEAL RELIEFS: No meal relief vehicles to stand at any time.
FERRY VEHICLES: No ferry vehicles to park on stand at any time.
DISPLAY: Rosebery Avenue.

BLOOMSBURY (from CLAPHAM JUNCTION, ST JOHNS HILL)

Buses proceed from High Holborn via Procter Street, Drake Street, Theobald's Road and Vernon Place departing to Bloomsbury Way. Set down in Bloomsbury Way, at stop X and pick up in High Holborn, at stop Q.

AVAILABILITY: At any time.
OPERATING RESTRICTIONS: **Turning Point Only - Buses must not stand**
DISPLAY: Holborn.

HOLBORN, PROCTER STREET [WEST SIDE] (from Finsbury Park Station)

Public stand for three buses on west side (offside) of Procter Street commencing 2 metres north of Fisher Street. extending 39 metres north.

Buses proceed from Theobald's Road via Drake Street and Procter Street to stand, departing via Procter Street, High Holborn, Southampton Row and Vernon Place to Theobald's Road. Set down in Theobald's Road, at Stop A and pick up in Theobald's Road, at Stop G.

AVAILABILITY:	At any time.
OPERATING RESTRICTIONS:	Unscheduled curtailments only
MEAL RELIEFS:	No meal relief vehicles to stand at any time.
FERRY VEHICLES:	No ferry vehicles to park on stand at any time.
DISPLAY:	Holborn.

PICCADILLY CIRCUS, WATERLOO PLACE, ST JAMES

Public stand for two buses on west side of Waterloo Place, commencing 9 metres south of lamp standard No.3 and extending 25 metres south.

From Clapham Junction, St Johns Hill.

Buses proceed from Piccadilly via Piccadilly Circus, Haymarket, Pall Mall and Waterloo Place to stand, departing via Waterloo Place and Regent Street to Piccadilly. Set down in Piccadilly, at Stop B and pick up in Piccadilly Contra-flow Bus Lane, at Stop S.

From Finsbury Park Station.

Buses proceed from Shaftesbury Avenue via Great Windmill Street, Haymarket, Pall Mall and Waterloo Place to stand, departing via Waterloo Place, Regent Street and Piccadilly Circus to Shaftesbury Avenue. Set down in Shaftesbury Avenue, at Stop K and pick up in Shaftesbury Avenue, at Stop H.

AVAILABILITY:	At any time.
OPERATING RESTRICTIONS:	Unscheduled curtailments only.
MEAL RELIEFS:	No meal relief vehicles to stand at any time.
FERRY VEHICLES:	No ferry vehicles to park on stand at any time.
DISPLAY:	Piccadilly Circus.

HYDE PARK CORNER, PICCADILLY (from Finsbury Park Station)

Public stand for one bus in first marked bus stand cage on south side of Piccadilly, westbound carriage way, commencing at a point opposite Nos. 128/134 Piccadilly and extending 18.5 metres east.

Drivers should take care not to use the tour bus stands forward of this stand. Buses proceed from Piccadilly direct to stand, departing via Piccadilly, Duke Of Wellington Place, Grosvenor Place and Hyde Park Corner to Piccadilly. Set down in Piccadilly, at Stop E and pick up in Piccadilly, at Stop D.

AVAILABILITY: At any time.
OPERATING RESTRICTIONS: Unscheduled curtailments only.
MEAL RELIEFS: No meal relief vehicles to stand at any time.
FERRY VEHICLES: No ferry vehicles to park on stand at any time.
DISPLAY: Hyde Park Corner.

HYDE PARK CORNER, ACHILLES WAY (from CLAPHAM JUNCTION, ST JOHNS HILL)

Public stand for two buses on the south side (offside) of Achilles Way, commencing 18 metres west of the southbound carriage way of Park Lane and extending 20 metres west. Buses proceed from Knightsbridge via Hyde Park Corner, Park Lane (Northbound) and Achilles Way to stand, departing via Achilles Way, Park Lane (Southbound), Hyde Park Corner, Duke Of Wellington Place and Grosvenor Place to Knightsbridge. Set down in Knightsbridge, at Stop T and pick up in Knightsbridge, at Stop P.

AVAILABILITY: At any time.
OPERATING RESTRICTIONS: Unscheduled curtailments only.
MEAL RELIEFS: No meal relief vehicles to stand at any time.
FERRY VEHICLES: No ferry vehicles to park on stand at any time.
DISPLAY: Hyde Park Corner.

SLOANE SQUARE (from CLAPHAM JUNCTION, ST JOHNS HILL)

Buses proceed from King's Road departing to Sloane Square (West And North And East And South Sides). Set down in King's Road, at Stop E and pick up in Sloane Square, at Stop H.

AVAILABILITY: At any time.
OPERATING RESTRICTIONS: **Turning Point Only - Buses must not stand**
DISPLAY: Sloane Square.

SLOANE SQUARE (from Finsbury Park Station)

Buses proceed from Sloane Street via Sloane Square (North And East And South And West Sides) departing to Sloane Street. Set down in Sloane Street, at Stop C and pick up in Sloane Street, at Stop A.

AVAILABILITY: At any time.
OPERATING RESTRICTIONS: **Turning Point Only - Buses must not stand**
DISPLAY: Sloane Square.

BATTERSEA BRIDGE ROAD, ELCHO STREET (from Finsbury Park Station)

Public stand for four buses on west side of Elcho Street, commencing 2 metres south of Howie Street and extending 52 metres south.

Buses proceed from Battersea Bridge Road via Parkgate Road and Elcho Street to stand, departing via Elcho Street and Howie Street to Battersea Bridge Road. Set down in Battersea Bridge Road, at Stop BE and pick up in Battersea Bridge Road, at Stop BL.

AVAILABILITY: At any time.
OPERATING RESTRICTIONS: **Unscheduled curtailments only.**
MEAL RELIEFS: No meal relief vehicles to stand at any time.
FERRY VEHICLES: No ferry vehicles to park on stand at any time.
DISPLAY: Battersea Bridge, South Side.

BATTERSEA BRIDGE ROAD, LATCHMERE (from Finsbury Park Station)

Public stand for two buses on west side of Battersea Bridge Road, commencing outside No. 214 and extending 23 metres south.

Buses proceed from Battersea Park Road via Battersea Bridge Road to stand, departing to Battersea Bridge Road. Set down in Battersea Park Road, at Stop LB and pick up in Battersea Bridge Road, at Stop LV.

AVAILABILITY: At any time.
OPERATING RESTRICTIONS: **Unscheduled curtailments only.**
MEAL RELIEFS: No meal relief vehicles to stand at any time.
FERRY VEHICLES: No ferry vehicles to park on stand at any time.
DISPLAY: Battersea, Latchmere Road.

CLAPHAM JUNCTION, ST JOHNS HILL

Private stand for three buses on forecourt of railway stores office on north side of St John's Hill.

Buses proceed from St John's Hill via Bus Lay-By to stand, departing via Bus Lay-By and St John's Hill to Falcon Road. Set down in St John's Hill, at Stop L and pick up in Falcon Road, at Stop E.

AVAILABILITY:	At any time.
OPERATING RESTRICTIONS:	No more than 1 bus on Route N19 should be scheduled to stand at any one time.
MEAL RELIEFS:	No meal relief vehicles to stand at any time.
FERRY VEHICLES:	No ferry vehicles to park on stand at any time.
DISPLAY:	Clapham Junction.
OTHER INFORMATION:	No toilet facilities available.

Transport for London - Live Mileage List

Route 19
 Service change 24969
 Date 28 August 2010

Reason for Issue

Revised structure at Battersea

OUT DIRECTION				
Timing Point	Code	Stop Number	Stop Name	Miles
	FNPkSPCS	FNPkSPCS	Park Station, Station Place, Centre Stand	
	FNPkSPG	R0003	Finsbury Park Interchange	0.00
		379	Blackstock Road	0.15
		15059	Gillespie Road	0.32
		15061	Riversdale Road	0.14
		1552	The Chestnuts	0.24
	HBRYBN	15063	Highbury Barn / London Metropolitan	0.15
		15065	Aberdeen Park	0.14
		9242	St Paul's Road / Highbury Grove	0.32
		11470	Highbury Corner	0.10
	HYISSN	80001	Upper Street / Laycock Street	0.19
		33092	Islington Town Hall	0.14
		29748	St Mary's Church	0.27
		9995	Islington Green	0.16
	ISLNHS	36602	Angel Station	0.20
		297	St John Street / Goswell Road	0.19
		1045	Sadler's Wells Theatre	0.15
		1802	Tysoe Street	0.16
		616	Mount Pleasant	0.16
		2622	Clerkenwell Road	0.19
		R0078	Gray's Inn Road	0.16
		14682	Red Lion Square	0.20
	BLBYSQ	BP5485	Bloomsbury Way	0.18
		BP5486	Museum Street	0.15
	CAMCSA	BP5172	Cambridge Circus	0.38
		1054	Dean Street / Chinatown	0.14
		37229	Trocadero / Haymarket	0.14
	PCIRPC	34716	Piccadilly Circus	0.16
		34717	Old Bond Street / Royal Academy	0.20
		15192	Green Park Station	0.18
		988	Green Park / Constitution Hill	0.28
	HPCRKB	109	Hyde Park Corner Station	0.37
		20821	Loane Street / Knightsbridge Station	0.37
		1151	Pont Street	0.21
	SLSQSS	3900	Sloane Square	0.33
		894	Sloane Square Station	0.10
		36881	Duke Of York Square	0.18
		25136	Walpole Street	0.10
		11292	Markham Street	0.14
		11293	Chelsea Old Town Hall	0.14
		11295	Carlisle Square / King's College	0.19
		1449	Beaufort Street / Kings Road	0.29
		11300	Cheyne Walk	0.09
	BATBSS	12874	Parkgate Road	0.33
	BATTES S	BATTES S	TERSEA BRIDGE ROAD, ELCHO STREET	0.00
TOTAL ROUTE MILEAGE - OUT DIRECTION			13486 metres	8.38 miles

BACK DIRECTION				
Timing Point	Code	Stop Number	Stop Name	Miles
	BATTES S	BATTES S	TERSEA BRIDGE ROAD, ELCHO STREET	
	BATBSS	12871	Battersea Bridge / Hester Road	0.00
		11298	Cheyne Walk	0.22
		1450	Beaufort Street / Kings Road	0.12
		35905	Old Church Street	0.14
		11294	Carlisle Square / King's College	0.14
		1573	Chelsea Old Town Hall	0.18
		1824	Markham Street	0.12
		11291	Duke Of York Square	0.22
		20968	Cadogan Gardens / Sloane Square	0.13
	SLSQSS	899	Loane Street/Sloane Square Station	0.13
		1150	Pont Street	0.22
		210	Loane Street / Knightsbridge Station	0.29
	HPCRKB	96	Hyde Park Corner Station	0.39
		989	Old Park Lane / Hard Rock Cafe	0.27
		99	Green Park Station	0.30
		36947	Old Bond Street / Royal Academy	0.18
	PCIRPC	37122	Piccadilly Circus	0.18
		161	Trocadero / Haymarket	0.10
		7851	Gerrard Place / Chinatown	0.22
		29684	Denmark Street	0.16
	TCTRNO	BP882	Tottenham Court Road Station	0.23
		29844	Museum Street	0.18
	BLBYSQ	982	Bloomsbury Square	0.12
		33093	Red Lion Square	0.17
		200	Gray's Inn Road	0.22
		197	Rosebery Avenue	0.18
		20684	Mount Pleasant	0.07
		1801	Tysoe Street	0.17
		14237	Hardwick Street	0.14
		1046	Sadler's Wells Theatre	0.12
		1017	St John Street / Goswell Road	0.17
	ISLNHS	25146	Angel Station	0.21
		9996	Theberton Street	0.21
		29792	St.Marys Church	0.15
		26500	Islington Town Hall	0.20
	HYISSN	10002	Highbury Corner	0.21
		11469	St Paul's Road	0.18
		15067	Highbury Grove	0.25
		15066	Aberdeen Park	0.12
	HBRYBN	15064	Highbury Barn	0.25
		BP3222	Lucerne Road	0.17
		15062	Riversdale Road	0.10
		15060	Monsell Road	0.28
		20583	Rock Street	0.28
	FNPkSPA	R0001	Finsbury Park Interchange	0.08
	FNPkSPCS	FNPkSPCS	Highbury Park Station, Station Place, Centre Stand	0.00
TOTAL ROUTE MILEAGE - BACK DIRECTION			13171 metres	8.18 miles

Transport for London - Live Mileage List

Route Number: N019
 Service Change Number: 24057
 Date: 27th March 2010

Reason for Issue

New Bus Lanes in Bloomsbury & Piccadilly

OUT DIRECTION				
Timing Point Code	Stop Number	Stop Name	Metres	Miles
FNPKSPCS	FNPKSPCS	rk Station, Station Place, Centre Stand		
FNPKSPG	R0003	Finsbury Park Interchange	0	0.00
	379	Blackstock Road	236	0.15
	15059	Gillespie Road	511	0.32
	15061	Riversdale Road	232	0.14
	1552	The Chestnuts	387	0.24
HBRYBN	15063	y Barn / London Metropol	247	0.15
	15065	Aberdeen Park	230	0.14
	9242	Paul's Road / Highbury Grc	513	0.32
	11470	Highbury Corner	157	0.10
HYISSN	80001	pper Street / Laycock Strec	310	0.19
	33092	Islington Town Hall	232	0.14
	29748	St Mary's Church	432	0.27
	9995	Islington Green	264	0.16
ISLNHS	36602	Angel Station	315	0.20
	297	t John Street / Goswell Roa	304	0.19
	1045	Sadler's Wells Theatre	234	0.15
	1802	Tysoe Street	264	0.16
	616	Mount Pleasant	261	0.16
	2622	Clerkenwell Road	302	0.19
	R0078	Gray's Inn Road	256	0.16
	14682	Red Lion Square	323	0.20
BLBYSQ	BP5485	Bloomsbury Way	296	0.18
	BP5486	Museum Street	240	0.15
CAMCSA	BP5172	Cambridge Circus	619	0.38
	1054	Dean Street / Chinatown	223	0.14
	37229	Trocadero / Haymarket	221	0.14
PCIRPC	34716	Piccadilly Circus	255	0.16
	34717	Bond Street / Royal Acade	324	0.20
	15192	Green Park Station	291	0.18
	988	reen Park / Constitution Hi	449	0.28
HPCRKB	109	Hyde Park Corner Station	598	0.37
	20821	ie Street / Knightsbridge St	599	0.37
	1151	Pont Street	336	0.21
SLSQSS	3900	Sloane Square	527	0.33
	894	Sloane Square Station	155	0.10
	36881	Duke Of York Square	282	0.18
	25136	Walpole Street	161	0.10
	11292	Markham Street	221	0.14
	11293	Chelsea Old Town Hall	226	0.14
	11295	arlyle Square/King's Colleg	312	0.19
	1449	leaufort Street / Kings Roa	463	0.29
	11300	Cheyne Walk	149	0.09
BATBSS	12874	Parkgate Road	529	0.33
	12878	Petworth Street	347	0.22
	33015	The Latchmere	705	0.44
	R0280	Inworth Street	274	0.17
	398	Battersea High Street	282	0.18
	8953	Falcon Grove	268	0.17
	8957	Meyrick Arms	286	0.18
CJSNSJ	27937	Clapham Junction Station	403	0.25
	CLNSJ S	apham Junction, St Johns F	0	0.00

TOTAL ROUTE MILEAGE - OUT DIRECTION 16051 metres 9.97 miles

BACK DIRECTION				
Timing Point Code	Stop Number	Stop Name	Metres	Miles
CLNSJ S	CLNSJ S	Clapham Junction, St Johns Hill		
CJSNFC	25569	pham Junction Station / Falcon R	0	0.00
	8955	Meyrick Arms	247	0.15
	8950	Ingrave Street	126	0.08
	397	Battersea High Street	265	0.16
	25525	Bullen Street	259	0.16
	248	The Latchmere	359	0.22
	12877	Prince Of Wales Drive	185	0.11
	34835	Battersea Police Station	323	0.20
	12873	Parkgate Road	114	0.07
BATBSS	12871	Battersea Bridge / Hester Road	260	0.16
	11298	Cheyne Walk	358	0.22
	1450	Beaufort Street / Kings Road	196	0.12
	35905	Old Church Street	228	0.14
	11294	Carlyle Square / King's College	223	0.14
	1573	Chelsea Old Town Hall	286	0.18
	1824	Markham Street	198	0.12
	11291	Duke Of York Square	350	0.22
	20968	adogan Gardens / Sloane Square	209	0.13
SLSQSS	899	oane Street/Sloane Square Static	206	0.13
	1150	Pont Street	360	0.22
	210	oane Street / Knightsbridge Static	474	0.29
HPCRKB	96	Hyde Park Corner Station	630	0.39
	989	Old Park Lane / Hard Rock Cafe	430	0.27
	99	Green Park Station	479	0.30
	36947	Old Bond Street / Royal Academy	283	0.18
PCIRPC	37122	Piccadilly Circus	293	0.18
	161	Trocadero / Haymarket	159	0.10
	7851	Gerrard Place / Chinatown	357	0.22
	29684	Denmark Street	252	0.16
TCTRNO	BP882	Tottenham Court Road Station	372	0.23
	29844	Museum Street	296	0.18
BLBYSQ	982	Bloomsbury Square	193	0.12
	33093	Red Lion Square	280	0.17
	200	Gray's Inn Road	351	0.22
	197	Rosebery Avenue	284	0.18
	20684	Mount Pleasant	115	0.07
	1801	Tysoe Street	279	0.17
	14237	Hardwick Street	219	0.14
	1046	Sadler's Wells Theatre	193	0.12
	1017	St John Street / Goswell Road	281	0.17
ISLNHS	25146	Angel Station	332	0.21
	9996	Theberton Street	341	0.21
	29792	St.Marys Church	249	0.15
	26500	Islington Town Hall	318	0.20
HYISSN	10002	Highbury Corner	341	0.21
	11469	St Paul's Road	286	0.18
	15067	Highbury Grove	402	0.25
	15066	Aberdeen Park	189	0.12
HBRYBN	15064	Highbury Barn	402	0.25
	BP3222	Lucerne Road	272	0.17
	15062	Riversdale Road	165	0.10
	15060	Monsell Road	455	0.28
	20583	Rock Street	457	0.28
FNPKSPA	R0001	Finsbury Park Interchange	128	0.08
FNPKSPCS	r Park Station, Station Place, Cent		0	0.00

TOTAL ROUTE MILEAGE - BACK DIRECTION 15309 metres 9.51 miles