

## SECTION 2: PART A

### SERVICE SPECIFICATION FOR ROUTE Nos. 16 & N16

#### CONTENTS

	Page
1. Tenders Required	2
2. Proposed Changes	2
3. Terminals	2
4. Days of Operation	3
5. Vehicle Type	4
6. Frequencies	5
7. Minimum Performance Standards	11
8. Running Times	12
9. Layovers	12
10. Timing Constraints	13
11. Control Strategy	13
12. Operational Considerations	14
13. Stopping Arrangements	15
14. Timing Points and Mileages	15
15. Vehicle Livery	16
 <u>Appendices</u>	
A. Route Record	17
B. Sample Running Times for Route Nos. 16 & N16	27

---

This document should be read in conjunction with the Corporation's Guide for Tenderers (Part A: Explanatory Notes - Service Requirements). Where appropriate, reference is made to the relevant section.

## 1. TENDERS REQUIRED

This document describes the service for which the Corporation requires Tenders and Tenderers **must** submit a fully compliant bid. In addition, Tenderers **may** wish to draw upon their local knowledge to submit alternative bids which offer improved value for money in meeting passenger needs. These might incorporate, for example, different timings, frequencies, route structures and / or vehicles. The Corporation will welcome such bids and give them careful consideration.

For more information, please refer to Section 2.1 of Part A of the Guide for Tenderers.

## 2. PROPOSED CHANGES

At this time, no changes are proposed to the existing service for introduction prior to the commencement of the new Route Agreement for Route Nos. 16 & N16.

Tenderers should note that the following alterations (subject to consultation) are proposed as part of this Service Specification for introduction with the new Route Agreement:

- Route No. 16 will be extended from Cricklewood Bus Garage to Staples Corner. Details of the revised routeing are included in Appendix A;
- 87 capacity double deck, dual door, low floor buses are specified for Route Nos. 16 & N16;
- **Tenderers must identify the cost of the Nightly element of this service separately.**

## 3. TERMINALS

Route No. 16 will operate between Staples Corner, Geron Way and Victoria Station.

**Tenderers should assume that a suitable stand will be provided within 5 minutes running time in each direction from Staples Corner in the Geron Way area.**

Route No. N16 will operate between Edgware Station, Bus Station and Victoria Station.

Full details of the route to be followed, the permitted terminal workings and the available stands are shown at Appendix A. Tenderers should particularly note the information relating to the shared usage of stands, the taking of meal reliefs and the use of ferry vehicles.

**4. DAYS OF OPERATION**

One timetable must be offered for Route Nos. 16 & N16 which will operate as follows:

DAY OF OPERATION	
Mondays to Fridays	Section 6.1
Saturdays & Good Friday	Section 6.2
Sundays	Section 6.3
Christmas Day	No service
Boxing Day	Section 6.4
Other Public Holidays	Sunday service
Nightly	Section 6.5
New Year's Eve night/New Year's Day morning*	Nightly service
Christmas Eve night/Christmas Day morning	No service
Christmas Day night/Boxing Day morning	No service

\* The New Year's Eve service level should be regarded as a minimum and any frequency increases and / or diversions will be discussed with the successful Tenderer on an annual basis.

## 5. VEHICLE TYPE

Please refer to Section 2.5 of Part A of the Guide for Tenderers.

Route Nos. 16 & N16 are currently approved for vehicles which are a maximum of 10.0 metres long and 2.5 metres wide between Edgware Station and Cricklewood Broadway, and 10.6 metres long and 2.5 metres wide between Cricklewood Broadway and Victoria Station (via Hyde Park Corner). A formal route test will be required for vehicles which exceed these dimensions. This will be arranged with the successful Tenderer.

The service requirement set out in Section 6 assumes that dual door, double deck buses with a minimum capacity of 87 of which approximately 60 should be seated, will be used on this route.

Luggage space should also be provided.

Tenderers must submit proposals based on new vehicles. These must be of a low floor design and be accessible to wheelchairs by means of a powered ramp.

**Bids for both conventional diesel powered vehicles and diesel-electric hybrid vehicles should be submitted and separate prices for both types are required.**

**Bids based on a mix of hybrid and conventional vehicles would be welcomed, subject to a minimum of 10 hybrid powered vehicles being offered for this route (full hybrid operation should be offered for routes with a vehicle requirement of less than 10).**

Tenderers should refer to the vehicle design (including accessibility) features contained in Schedule II to Annex B of the Framework Agreement and Section 2 Part B of the Master ITT (Version 2 issued June 2005).

Tenderers may also submit bids based on using existing vehicles. Tenderers are asked to specify what refurbishment would be carried out on existing buses and the expected timescale of those works. See Master ITT (Version 2 issued June 2005).

## 6. FREQUENCIES

The level of service (e.g. every 15 minutes) required by the Corporation is described in terms of the interval between departures. Whilst a completely regular service at the specified frequency should be possible at most times, occasionally a bus may be timetabled to depart up to five minutes earlier or later than the regular time.

Tenderers should note that when the specified frequency changes (e.g. between the peak and midday periods), the scheduled interval between buses should never be greater than that provided by the lower of the two frequencies **AT ANY POINT ON THE ROUTE**.

Tenderers should note that unless otherwise stated **all** journeys should operate between the terminal points defined in each direction.

## 6.1 Mondays to Fridays

### 1. Staples Corner, Geron Way to Victoria Station

0505 - 0600	Every 10 minutes
0601 - 0615	Every 7½ minutes
0616 - 1755	Every 6 minutes
1756 - 1855	Every 7½ minutes
1856 - 2255	Every 10 minutes
2256 - 2355	Every 12 minutes

First departure from Staples Corner, Geron Way no later than 0510.  
Last departure from Staples Corner, Geron Way no earlier than 2350.

Tenderers should ensure that buses are scheduled to be no more than 6 minutes apart at Marble Arch, Edgware Road between 0730 and 0830 and between 1545 and 1645.

### 2. Victoria Station to Staples Corner, Geron Way

0550 - 0645	Every 10 minutes
0646 - 0700	Every 7½ minutes
0701 - 1900	Every 6 minutes
1901 - 2000	Every 7½ minutes
2001 - 2340	Every 10 minutes
2341 - 0040	Every 12 minutes

First departure from Victoria Station no later than 0555.  
Last departure from Victoria Station no earlier than 0035.

Tenderers should ensure that buses are scheduled to be no more than 6 minutes apart at Kilburn Station between 0730 and 0900 and between 1545 and 1645.

## 6.2 Saturdays & Good Friday

### 1. Staples Corner, Geron Way to Victoria Station

0505 - 0655	Every 12 minutes
0656 - 0755	Every 10 minutes
0756 - 0855	Every 7½ minutes
0856 - 1655	Every 6 minutes
1656 - 1755	Every 7½ minutes
1756 - 2255	Every 10 minutes
2256 - 2355	Every 12 minutes

First departure from Staples Corner, Geron Way no later than 0510.  
Last departure from Staples Corner, Geron Way no earlier than 2350.

Tenderers should ensure that buses are scheduled to be no more than 6 minutes apart at Marble Arch, Edgware Road between 0930 and 1130.

### 2. Victoria Station to Staples Corner, Geron Way

0550 - 0730	Every 12 minutes
0731 - 0900	Every 10 minutes
0901 - 1000	Every 7½ minutes
1001 - 1800	Every 6 minutes
1801 - 1900	Every 7½ minutes
1901 - 2340	Every 10 minutes
2341 - 0040	Every 12 minutes

First departure from Victoria Station no later than 0555.  
Last departure from Victoria Station no earlier than 0035.

Tenderers should ensure that buses are scheduled to be no more than 7½ minutes apart at Kilburn Station between 0930 and 1030 and no more than 6 minutes apart between 1031 and 1130.

### 6.3 Sundays

1. Staples Corner, Geron Way to Victoria Station

0505 - 0655	Every 15 minutes
0656 - 2255	Every 10 minutes
2256 - 2355	Every 12 minutes

First departure from Staples Corner, Geron Way no later than 0510.  
Last departure from Staples Corner, Geron Way no earlier than 2350.

Tenderers should ensure that buses are scheduled to be no more than 10 minutes apart at Marble Arch, Edgware Road between 0930 and 1130.

2. Victoria Station to Staples Corner, Geron Way

0550 - 0735	Every 15 minutes
0736 - 2340	Every 10 minutes
2341 - 0040	Every 12 minutes

First departure from Victoria Station no later than 0555.  
Last departure from Victoria Station no earlier than 0035.

Tenderers should ensure that buses are scheduled to be no more than 10 minutes apart at Kilburn Station between 0930 and 1130.



## 6.4 Boxing Day

### 1. Staples Corner, Geron Way to Victoria Station

0750 - 2255	Every 10 minutes
2256 - 2355	Every 12 minutes

First departure from Staples Corner, Geron Way no later than 0755.  
Last departure from Staples Corner, Geron Way no earlier than 2350.

Tenderers should ensure that buses are scheduled to be no more than 10 minutes apart at Marble Arch, Edgware Road between 0930 and 1130.

### 3. Victoria Station to Staples Corner, Geron Way

0755 - 2340	Every 10 minutes
2341 - 0040	Every 12 minutes

First departure from Victoria Station, Geron Way no later than 0800.  
Last departure from Victoria Station, Geron Way no earlier than 0035.

Tenderers should ensure that buses are scheduled to be no more than 10 minutes apart at Kilburn Station between 0930 and 1130.

**6.5 Nightly**

1. Edgware Station, Bus Station to Victoria Station

2355 - 0455            Every 20 minutes

First departure from Edgware Station, Bus Station no later than 2400.  
Last departure from Edgware Station, Bus Station no earlier than 0450.

2. Victoria Station to Edgware Station, Bus Station

0055 - 0545            Every 20 minutes

First departure from Victoria Station no later than 0100.  
Last departure from Victoria Station no earlier than 0540.

**Tenderers must identify the cost of the Nightly element of this service separately.**

## 7. MINIMUM PERFORMANCE STANDARDS

Please refer to Section 2.7 of Part A of the Guide for Tenderers.

Tenderers should note that the objective of the Operator of Route Nos. 16 & N16 shall be to operate all scheduled mileage and adhere **fully** to the published timetable. The Operator must use its best endeavours to achieve this.

The **minimum** standards of acceptable performance for Route No. 16 shall be:

Average Excess Wait Time:	No more than 1.10 minutes
Minimum Operated Mileage:	No less than 98.00%

The **minimum** standards of acceptable performance for Route No. N16 shall be:

Departing on Time:	No less than 85.00%
Minimum Operated Mileage:	No less than 98.00%

or as notified by the Corporation from time to time. The Operator will be required to achieve or better the standards.

It is unlikely that the minimum number of QSI surveys for performance measurement will be conducted on Route No. N16 at present. However, this may change at a later date.

### QSI Thresholds

The QSI threshold is the standard of performance to be achieved by the operator in order to qualify for an automatic contract extension (in accordance with Schedule IX of the Framework Agreement).

Average Excess Wait Time Threshold = 0.95 minutes

It is unlikely that the minimum number of QSI surveys for Threshold measurement will be conducted on Route No. N16 at present. However, this may change at a later date when a Threshold figure may be published.

### Summary of proposed QSI coverage: Route Nos. 16 & N16

Note: While London Buses undertakes to carry out QSI surveys at the times and locations specified below, it may prove impossible to rearrange a survey cancelled or nullified at short notice.

## Survey locations

Location of QSI survey points in each direction:

### **Southbound (towards Victoria)**

Cricklewood Garage  
Kilburn High Road

### **Northbound (towards Staples Corner)**

Victoria  
Kilburn High Road

Total scheduled manual QSI surveys per quarter = 64.

## 8. RUNNING TIMES

Extracts from the public timetable with sample running times for Route Nos. 16 & N16 are attached at Appendix B. This gives an indication of the time required to travel the route. Attention is drawn to the variations in running times at different times of the day. Please refer to Section 2.8 of Part A of the Guide for Tenderers for further information.

Tenderers should devise their own running times for the section of Route No. 16 between Staples Corner and Cricklewood Bus Garage.

Tenderers should carefully check the existing running times to ensure that they are appropriate in present traffic conditions. Tenderers should particularly check the existing running times for the Mondays to Fridays interpeak and the Saturday PM Shopping period.

It is expected that any changes to these running times can be accommodated within existing cycle times.

When reviewing existing, and devising new, running times Tenderers should refer to:

- the minimum performance standards for Route Nos. 16 & N16 in Section 7 above;
- the historical performance data provided in Section 1 Part B of the introduction to this ITT;
- the paragraph in Section 12 referring to the proposed extension of the Cashless Boarding zone throughout the whole of the London area.

In order to meet reliability targets, Tenderers may wish to consider the inclusion of a boarding time allowance at Marble Arch for Route No. 16 as appropriate on all or some nights.

Tenderers may consider if school summer holiday schedules, incorporating running time reductions, are desirable for this route. In this event, schedules and costs must be submitted separately.

## 9. LAYOVERS

Under normal circumstances, layover time on stands and at bus stations should be restricted to that required to provide a reliable service. Longer layovers for any other purpose may only be taken with the permission of the Corporation.

## **10. TIMING CONSTRAINTS**

Route No. 16 should interwork with Route No. N16 to form a seamless 24 hour service over the common section between Cricklewood Broadway and Victoria Station.

Route No. N16 should interwork with Route No. 32 to form a seamless 24 hour service over the common section between Edgware Station, Bus Station and Kilburn Station.

These requirements will be negotiated with the successful Tenderers. Tenderers submitting bids for both these routes should bear this requirement in mind when compiling schedules.

## **11. CONTROL STRATEGY**

Route Nos. 16 & N16 can suffer from the effects of traffic congestion, making some form of route control essential in order to achieve or better the minimum performance standards for this route.

Tenderers should submit proposals on the control strategy they intend to adopt and the type of control they would intend to use by completing the form provided in Section 3: Part 7 of this ITT. The cost of this control should be included within the main Tender price.

Tenderers should also indicate how they intend to facilitate driver changeovers and meal reliefs for this route.

Further information is provided in Section 2.11 of Part A of the Guide for Tenderers.

## 12. OPERATIONAL CONSIDERATIONS

Tenderers should note the following operating considerations affecting Route Nos. 16 & N16:

- These routes can suffer from unpredictable traffic delays in the Cricklewood and Kilburn areas, and especially within central London (Maida Vale, Marble Arch, Hyde Park Corner).

Tenderers should also note the following factors / events which may have an impact on Route Nos. 16 & N16 in the foreseeable future:

- It is anticipated that Cashless Boarding will be extended throughout London at some stage during the lifetime of this contract. **This is expected to lead to significant savings in running and recovery times to bus routes, and, therefore, potential resource (cycle time and PVR) savings are expected. Tenderers are required to identify and submit the level of savings per vehicle that could be achieved by reducing peak vehicle requirement, and / or how reliability targets could be revised when the Scheme is introduced.**
- A major rebuilding of the Victoria Line Station at Victoria is planned, subject to Transport and Works Act approval. Works are likely to start in late 2008 and last until the end of 2015. During this period routeings and stopping and standing arrangements in the area may be subject to change. Any such changes will be discussed with the successful tenderer as appropriate.

The above factors have been included to assist Tenderers and represents the information currently available to the Corporation. Tenderers should make their own enquiries about events which may impact upon the route and should form their own views about their likely effect upon it.

### 13. STOPPING ARRANGEMENTS

Buses operating on Route Nos. 16 & N16 must serve all stops on the line of route designated for the route. There are two types of bus stop:

Compulsory (white stop flag): where all buses must stop.  
Request (red stop flag): where buses are only required to stop if a passenger rings the bell or an intending passenger signals to the driver.

On all night routes (with N prefix) and on 24 hour routes (between the hours of 0100 and 0430) all bus stops are regarded as request stops regardless of their type.

### 14. TIMING POINTS & MILEAGES

#### Timing Points

The required timing points (and codes) are shown in Caesar.

#### Mileages for Route No. 16

Staples Corner, Geron Way to Victoria Station	6.6 miles
Victoria Station to Staples Corner, Geron Way	6.6 miles

#### Mileages for Route No. N16

Edgware Station to Victoria Station	10.5 miles
Victoria Station to Edgware Station	10.5 miles

Tenderers should note that:

- these measurements are believed to be accurate to within 0.5 miles, but no warranty or representation as to accuracy is given;
- out of service stand workings have not been measured and are not included within the above measurements;
- if alternative or additional measurements are used by the Tenderer, these must be stated in the tender submission;
- point to point measurements pertaining to recognised curtailment points or alternative terminals will be agreed with the successful Tenderer once the contract has been awarded.

## 15. VEHICLE LIVERY

All vehicles to be used on Route Nos. 16 & N16 from the commencement of the new Route Agreement must be in a livery that is exclusively Corporation red. The paint should be matched accurately to the colour as defined by the following manufacturer's specifications:

ICI London Bus Red P498 FPF 3

Other manufacturers should also be able to produce this specification from the ICI colour chart.

This requirement does not include the lower panels which may be in a different colour but which shall not exceed 50cm in height, or the rooftop which should be painted white so as to reduce temperatures inside the vehicle during the summer months.

The positioning and size of Operators' logos are to be agreed between the Operator and the Corporation and, where possible, these should be above the front doors on the nearside of the vehicles and above the drivers' offside cab windows.

All livery proposals must be submitted to the Contracts Tendering Manager for approval.



## APPENDIX A: ROUTE RECORD

### ROUTE No. 16: STAPLES CORNER, GERON WAY - VICTORIA STATION

#### STREETS TRAVERSED

**Towards Victoria Station:** Staples Corner, Edgware Road, Cricklewood Broadway, Shoot-Up Hill, Kilburn High Road, Maida Vale, Edgware Road, Marble Arch, Park Lane, Hyde Park Corner, Duke of Wellington Place, Grosvenor Place, Lower Grosvenor Place, Buckingham Palace Road, Terminus Place.

**Towards Staples Corner, Geron Way:** Wilton Road, Victoria Street, Grosvenor Gardens, Grosvenor Place, Hyde Park Corner, Park Lane, Cumberland Gate, Marble Arch, Edgware Road, Maida Vale, Kilburn High Road, Shoot-Up Hill, Cricklewood Broadway, Edgware Road, Staples Corner.

#### STANDS, TURNING POINTS AND DESTINATION BLINDS

Tenderers should note that under normal circumstances, the specific restrictions relating to each stand will apply to the whole stand at all times. Any variation to such standing arrangements must be agreed by the Corporation. In addition, Tenderers should note the following general requirements:

- 1) Drivers MUST switch off engines during layover periods at bus stations or on stands.
- 2) No meal reliefs may be taken on any stand (on or off line of route) without the permission of the Corporation.
- 3) No crew ferry vehicles may enter any stand (on or off line of route) without the permission of the Corporation.
- 4) Destination blind displays to be used are shown under each stand description. Tenderers may suggest, within their bids, alternative blind displays.
- 5) The intermediate (also known as via) blind display to be used on the nearside of the vehicle is shown in the box below:

16 via Maida Vale
-------------------

For further information, please refer to Annex C of the Framework Agreement: General Conditions relating to the use of London Buses' Bus Stations and Stands.

### **STAPLES CORNER, GERON WAY**

**Tenderers should assume that a suitable stand will be provided within 5 minutes running time in each direction from Staples Corner in the Geron Way area.**

**Tenderers should assume the following will apply:**

Buses proceed from Edgware Road via Geron Way to stand, departing via Geron Way to Edgware Road. Set down in Edgware Road, at stop BR and pick up in Edgware Road, at stop SD.

AVAILABILITY:	At any time.
OPERATING RESTRICTIONS:	No more than <b>2</b> vehicles on Route No. 16 should be scheduled to stand at any one time.
MEAL RELIEFS:	No meal relief vehicles to stand at any time.
FERRY VEHICLES:	No ferry vehicles to park on stand at any time.
OTHER INFORMATION:	No toilet facilities available.
BLIND DISPLAY:	Staples Corner

### **CRICKLEWOOD BROADWAY, CHICHELE ROAD (from Victoria Station)**

Public stand on west side of Chichele Road, commencing at party wall of No. 28 and the Islamic Mosque and extending 20 metres southwards.

Buses proceed from Cricklewood Broadway via Anson Road and Chichele Road to stand, departing via Chichele Road to Cricklewood Broadway. Set down in Cricklewood Broadway, at stop BL and pick up in Cricklewood Broadway, at stop BF.

AVAILABILITY:	At any time.
OPERATING RESTRICTIONS:	To be used for unscheduled curtailments only.
MEAL RELIEFS:	No meal relief vehicles to stand at any time.
FERRY VEHICLES:	No ferry vehicles to park on stand at any time.
OTHER INFORMATION:	Speed humps exist on Anson Road.
BLIND DISPLAY:	Cricklewood Broadway

### **KILBURN, QUEx ROAD (from Victoria Station)**

Public stand on north side of Quex Road, commencing 8 metres east of junction with Kingsgate Road and extending 17 metres east.

Buses proceed from Kilburn High Road via Quex Road to stand, departing via Quex Road, Abbey Road and Belsize Road to Kilburn High Road. Set down in Kilburn High Road, at stop P and pick up in Kilburn High Road, at stop W.

AVAILABILITY:	At any time.
OPERATING RESTRICTIONS:	To be used for unscheduled curtailments only.
MEAL RELIEFS:	No meal relief vehicles to stand at any time.
FERRY VEHICLES:	No ferry vehicles to park on stand at any time.
BLIND DISPLAY:	Kilburn High Road Station

**KILBURN PARK STATION, CAMBRIDGE GARDENS (from Staples Corner)**

Public stand in 2 portions:

In east arm of Cambridge Gardens, alongside garden enclosure, commencing at party wall of Nos. 15/16 and extending 20 metres south.

Overflow portion in south arm of Cambridge Gardens, alongside garden enclosure, commencing 17 metres west of centre of Cambridge Gardens (east arm) and extending 21 metres west.

Buses proceed from Kilburn High Road via Cambridge Avenue, Cambridge Gardens (west arm), Cambridge Gardens (south arm) and Cambridge Gardens (east arm) to stand, departing via Cambridge Gardens (east arm) and Cambridge Avenue to Kilburn High Road. Set down in Kilburn High Road, at stop N and pick up in Kilburn High Road, at stop S.

AVAILABILITY:	At any time.
OPERATING RESTRICTIONS:	To be used for unscheduled curtailments only.
MEAL RELIEFS:	No meal relief vehicles to stand at any time.
FERRY VEHICLES:	No ferry vehicles to park on stand at any time.
BLIND DISPLAY:	Kilburn High Road Station

**MAIDA VALE, RANDOLPH AVENUE (from Victoria Station)**

Public stand on west side of Randolph Avenue, commencing at a point in line with southern boundary wall of No. 171 and extending 22 metres southwards to a point opposite the central pillar of No. 168.

Buses proceed from Maida Vale via Elgin Avenue and Randolph Avenue to stand, departing via Randolph Avenue and Carlton Vale to Maida Vale. Set down in Maida Vale, at stop A and pick up in Maida Vale, at stop KE.

AVAILABILITY:	At any time.
OPERATING RESTRICTIONS:	To be used for unscheduled curtailments only.
MEAL RELIEFS:	No meal relief vehicles to stand at any time.
FERRY VEHICLES:	No ferry vehicles to park on stand at any time.
BLIND DISPLAY:	Maida Vale

### **HARROW ROAD BRIDGE, WARWICK AVENUE**

Public stand in layby in Harrow Road outside John Aird Court, commencing 10 metres north of bus stop No. 3249 and extending 21 metres northwards (situated on north east side of Warwick Avenue roundabout).

#### **From Staples Corner**

Buses proceed from Edgware Road via Marylebone Road, Harrow Road, Harrow Road Bridge and Harrow Road to stand, departing via Harrow Road to Edgware Road. Set down in Edgware Road, at stop EC and pick up in Edgware Road, at stop EM.

#### **From Victoria Station**

Buses proceed from Edgware Road via Harrow Road, Harrow Road Bridge and Harrow Road to stand, departing via Harrow Road to Edgware Road. Set down in Edgware Road, at stop EL and pick up in Edgware Road, at stop ED.

AVAILABILITY:	At any time.
OPERATING RESTRICTIONS:	To be used for unscheduled curtailments only.
MEAL RELIEFS:	No meal relief vehicles to stand at any time.
FERRY VEHICLES:	No ferry vehicles to park on stand at any time.
OTHER INFORMATION:	Drivers parking on the stand must ensure buses do not obstruct the stop.
BLIND DISPLAY:	Edgware Road Station

### **MARBLE ARCH, TYBURN WAY**

Public stand on west side of Tyburn Way, commencing 1 metre south of lamp standard No 20512 and extending 33 metres south.

#### **From Staples Corner**

Buses proceed from Edgware Road via Marble Arch, Park Lane, Cumberland Gate and Tyburn Way to stand, departing via Tyburn Way, Marble Arch, Park Lane, Cumberland Gate and Marble Arch to Edgware Road. Set down in Edgware Road, at stop H and pick up in Edgware Road, at stop E.

#### **From Victoria Station**

Buses proceed from Park Lane via Cumberland Gate and Tyburn Way to stand, departing via Tyburn Way and Marble Arch to Park Lane. Set down in Park Lane, at stop W and pick up in Park Lane, at stop R.

AVAILABILITY:	At any time.
OPERATING RESTRICTIONS:	To be used for unscheduled curtailments only.
MEAL RELIEFS:	No meal relief vehicles to stand at any time.
FERRY VEHICLES:	No ferry vehicles to park on stand at any time.
BLIND DISPLAY:	Marble Arch

**HYDE PARK CORNER, ACHILLES WAY (from Staples Corner)**

Public stand on north side of Achilles Way, commencing 18 metres west of the southbound carriageway of Park Lane and extending 12 metres west.

Buses proceed from Park Lane via Achilles Way to stand, departing via Achilles Way to Park Lane. Set down in Park Lane, at stop B and pick up in Park Lane, at stop Y.

AVAILABILITY:	At any time.
OPERATING RESTRICTIONS:	To be used for unscheduled curtailments only.
MEAL RELIEFS:	No meal relief vehicles to stand at any time.
FERRY VEHICLES:	No ferry vehicles to park on stand at any time.
BLIND DISPLAY:	Park Lane, Hilton Hotel

**VICTORIA, VAUXHALL BRIDGE ROAD (East)**

Public stand for three buses on east side of Vauxhall Bridge Road before stop L. Adjacent to retail premises and opposite Apollo Theatre.

Buses proceed from Terminus Place via Wilton Road and Vauxhall Bridge Road to stand, departing via Vauxhall Bridge Road and Neathouse Place to Wilton Road. Set down in Terminus Place and pick up in Wilton Road, at stop H.

AVAILABILITY:	At any time.
OPERATING RESTRICTIONS:	No more than <b>2</b> vehicles on Route No. 16 should be scheduled to stand at any one time.
MEAL RELIEFS:	No meal relief vehicles to stand at any time.
FERRY VEHICLES:	No ferry vehicles to park on stand at any time.
OTHER INFORMATION:	London Buses toilet facilities available 24 hours.
BLIND DISPLAY:	Victoria

## ROUTE No. N16: EDGWARE STATION - VICTORIA STATION

### STREETS TRAVERSED

**Towards Victoria Station:** Edgware Bus Station, Station Road, Edgware High Street, Burnt Oak Broadway, Edgware Road, The Hyde, West Hendon Broadway, Staples Corner, Edgware Road, Cricklewood Broadway, Shoot-Up Hill, Kilburn High Road, Maida Vale, Edgware Road, Marble Arch, Park Lane, Hyde Park Corner, Duke of Wellington Place, Grosvenor Place, Lower Grosvenor Place, Buckingham Palace Road, Terminus Place.

**Towards Edgware Station:** Wilton Road, Victoria Street, Grosvenor Gardens, Grosvenor Place, Hyde Park Corner, Park Lane, Cumberland Gate, Marble Arch, Edgware Road, Maida Vale, Kilburn High Road, Shoot-Up Hill, Cricklewood Broadway, Edgware Road, Staples Corner, West Hendon Broadway, The Hyde, Edgware Road, Burnt Oak Broadway, Edgware High Street, Station Road, Edgware Bus Station.

### STANDS, TURNING POINTS AND DESTINATION BLINDS

Tenderers should note that under normal circumstances, the specific restrictions relating to each stand will apply to the whole stand at all times. Any variation to such standing arrangements must be agreed by the Corporation. In addition, Tenderers should note the following general requirements:

- 1) Drivers MUST switch off engines during layover periods at bus stations or on stands.
- 2) No meal reliefs may be taken on any stand (on or off line of route) without the permission of the Corporation.
- 3) No crew ferry vehicles may enter any stand (on or off line of route) without the permission of the Corporation.
- 4) Destination blind displays to be used are shown under each stand description. Tenderers may suggest, within their bids, alternative blind displays.
- 5) The intermediate (also known as via) blind display to be used on the nearside of the vehicle is shown in the box below:

N16 via Cricklewood
---------------------

For further information, please refer to Annex C of the Framework Agreement: General Conditions relating to the use of London Buses' Bus Stations and Stands.

### **EDGWARE STATION, BUS STATION**

Private stand for 9 buses on south side of Edgware Bus Station adjacent to and forward of pedestrian entrance to The Broadwalk Shopping Centre.

Buses proceed from Edgware Bus Station direct to stand, departing to Edgware Bus Station. Set down in Edgware Bus Station, at stop G and pick up in Edgware Bus Station, at stop D.

AVAILABILITY:	At any time.
OPERATING RESTRICTIONS:	No more than 2 vehicles on Route No. N16 should be scheduled to stand at any one time.
MEAL RELIEFS:	No meal relief vehicles to stand at any time.
FERRY VEHICLES:	No ferry vehicles to park on stand at any time.
OTHER INFORMATION:	London Buses toilet facilities available 24 hours.
BLIND DISPLAY:	Edgware

### **BURNT OAK DEANSBROOK ROAD (from Victoria Station)**

Public stand for 2 buses on south side of Deansbrook Road, outside Blood Transfusion buildings, approximately 80 metres east of and opposite Heming Road.

Buses proceed from Burnt Oak Broadway via Watling Avenue, Orange Hill Road and Deansbrook Road to stand, departing via Deansbrook Road to Burnt Oak Broadway. Set down in Burnt Oak Broadway, at stop G and pick up in Burnt Oak Broadway, at stop HA.

AVAILABILITY:	At any time.
OPERATING RESTRICTIONS:	To be used for unscheduled curtailments only.
MEAL RELIEFS:	No meal relief vehicles to stand at any time.
FERRY VEHICLES:	No ferry vehicles to park on stand at any time.
BLIND DISPLAY:	Burnt Oak Broadway

### **CRICKLEWOOD BROADWAY, CHICHELE ROAD (from Edgware Station)**

Public stand on west side of Chichele Road, commencing at party wall of No. 28 and the Islamic Mosque and extending 20 metres southwards.

Buses proceed from Cricklewood Broadway via Anson Road and Chichele Road to stand, departing via Chichele Road to Cricklewood Broadway. Set down in Cricklewood Broadway, at stop BD and pick up in Cricklewood Broadway, at stop BP.

AVAILABILITY:	At any time.
OPERATING RESTRICTIONS:	To be used for unscheduled curtailments only.
MEAL RELIEFS:	No meal relief vehicles to stand at any time.
FERRY VEHICLES:	No ferry vehicles to park on stand at any time.
BLIND DISPLAY:	Cricklewood Broadway

**KILBURN, QUEX ROAD (from Victoria Station)**

Public stand on north side of Quex Road, commencing 8 metres east of junction with Kingsgate Road and extending 17 metres east.

Buses proceed from Kilburn High Road via Quex Road to stand, departing via Quex Road, Abbey Road and Belsize Road to Kilburn High Road. Set down in Kilburn High Road, at stop P and pick up in Kilburn High Road, at stop W.

AVAILABILITY: At any time.  
OPERATING RESTRICTIONS: To be used for unscheduled curtailments only.  
MEAL RELIEFS: No meal relief vehicles to stand at any time.  
FERRY VEHICLES: No ferry vehicles to park on stand at any time.  
BLIND DISPLAY: Kilburn High Road Station

**KILBURN PARK STATION, CAMBRIDGE GARDENS (from Edgware Station)**

Public stand in 2 portions:

In east arm of Cambridge Gardens, alongside garden enclosure, commencing at party wall of Nos. 15/16 and extending 20 metres south.

Overflow portion in south arm of Cambridge Gardens, alongside garden enclosure, commencing 17 metres west of centre of Cambridge Gardens (east arm) and extending 21 metres west.

Buses proceed from Kilburn High Road via Cambridge Avenue, Cambridge Gardens (west arm), Cambridge Gardens (south arm) and Cambridge Gardens (east arm) to stand, departing via Cambridge Gardens (east arm) and Cambridge Avenue to Kilburn High Road. Set down in Cambridge Avenue, at stop KB and pick up in Kilburn High Road, at stop S.

AVAILABILITY: At any time.  
OPERATING RESTRICTIONS: To be used for unscheduled curtailments only.  
MEAL RELIEFS: No meal relief vehicles to stand at any time.  
FERRY VEHICLES: No ferry vehicles to park on stand at any time.  
OTHER INFORMATION: Overflow stand to be used only if Cambridge Gardens, (south arm) is full.  
BLIND DISPLAY: Kilburn High Road Station



**MAIDA VALE, RANDOLPH AVENUE (from Victoria Station)**

Public stand on west side of Randolph Avenue, commencing at a point in line with southern boundary wall of No. 171 and extending 22 metres southwards to a point opposite the central pillar of No. 168.

Buses proceed from Maida Vale via Elgin Avenue and Randolph Avenue to stand, departing via Randolph Avenue and Carlton Vale to Maida Vale. Set down in Maida Vale, at stop A and pick up in Maida Vale, at stop KE.

AVAILABILITY: At any time.  
OPERATING RESTRICTIONS: To be used for unscheduled curtailments only.  
MEAL RELIEFS: No meal relief vehicles to stand at any time.  
FERRY VEHICLES: No ferry vehicles to park on stand at any time.  
BLIND DISPLAY: Maida Vale

**HARROW ROAD BRIDGE, WARWICK AVENUE**

Public stand in layby in Harrow Road outside John Aird Court, commencing 10 metres north of bus stop No. 3249 and extending 21 metres northwards (situated on north east side of Warwick Avenue roundabout).

From Edgware Station

Buses proceed from Edgware Road via Harrow Road, Harrow Road Bridge and Harrow Road to stand, departing via Harrow Road to Edgware Road. Set down in Edgware Road, at stop EC and pick up in Edgware Road, at stop EM.

From Victoria Station

Buses proceed from Edgware Road via Harrow Road, Harrow Road Bridge and Harrow Road to stand, departing via Harrow Road to Edgware Road. Set down in Edgware Road, at stop EL and pick up in Edgware Road, at stop ED.

AVAILABILITY: At any time.  
OPERATING RESTRICTIONS: To be used for unscheduled curtailments only.  
MEAL RELIEFS: No meal relief vehicles to stand at any time.  
FERRY VEHICLES: No ferry vehicles to park on stand at any time.  
BLIND DISPLAY: Edgware Road Station

### **MARBLE ARCH, TYBURN WAY**

Public stand on west side of Tyburn Way, commencing 1 metre south of lamp standard No. 20512 and extending 33 metres south.

#### **From Edgware Station**

Buses proceed from Edgware Road via Marble Arch, Park Lane, Cumberland Gate and Tyburn Way to stand, departing via Tyburn Way, Marble Arch, Park Lane, Cumberland Gate and Marble Arch to Edgware Road. Set down in Edgware Road, at stop H and pick up in Edgware Road, at stop E.

#### **From Victoria Station**

Buses proceed from Park Lane via Cumberland Gate and Tyburn Way to stand, departing via Tyburn Way and Marble Arch to Park Lane. Set down in Park Lane, at stop W and pick up in Park Lane, at stop R.

AVAILABILITY:	At any time.
OPERATING RESTRICTIONS:	To be used for unscheduled curtailments only.
MEAL RELIEFS:	No meal relief vehicles to stand at any time.
FERRY VEHICLES:	No ferry vehicles to park on stand at any time.
BLIND DISPLAY:	Marble Arch

### **HYDE PARK CORNER, ACHILLES WAY (from Edgware Station)**

Public stand on north side of Achilles Way, commencing 18 metres west of the southbound carriageway of Park Lane and extending 12 metres west.

Buses proceed from Park Lane via Achilles Way to stand, departing via Achilles Way to Park Lane. Set down in Park Lane, at stop B and pick up in Park Lane, at stop Y.

AVAILABILITY:	At any time.
OPERATING RESTRICTIONS:	To be used for unscheduled curtailments only.
MEAL RELIEFS:	No meal relief vehicles to stand at any time.
FERRY VEHICLES:	No ferry vehicles to park on stand at any time.
BLIND DISPLAY:	Park Lane Hilton Hotel

**VICTORIA, VAUXHALL BRIDGE ROAD (EAST)**

Public stand for three buses on east side of Vauxhall Bridge Road before stop L. Adjacent to retail premises and opposite Apollo Theatre.

Buses proceed from Terminus Place via Wilton Road and Vauxhall Bridge Road to stand, departing via Vauxhall Bridge Road and Neathouse Place to Wilton Road. Set down in Terminus Place, at alighting point and pick up in Wilton Road, at stop H.

AVAILABILITY:	At any time.
OPERATING RESTRICTIONS:	No more than <b>2</b> vehicles on Route No. N16 should be scheduled to stand at any one time.
MEAL RELIEFS:	No meal relief vehicles to stand at any time.
FERRY VEHICLES:	No ferry vehicles to park on stand at any time.
OTHER INFORMATION:	London Buses toilet facilities available 24 hours.
BLIND DISPLAY:	Victoria

**APPENDIX B: SAMPLE RUNNING TIMES FOR ROUTE No.16**  
(based on current schedule)

**MONDAYS TO FRIDAYS**

1. Cricklewood, Broadway to Victoria Station

	Typical early morning	Longest morning peak	Typical interpeak	Longest afternoon peak	Typical early evening	Typical late evening
<b>Cricklewood</b> <i>Edgware Road, Mora Road</i>	0515	0803	1200	1702	2005	2315
Cricklewood Broadway <i>The Crown</i>	0518	0809	1205	1707	2009	2319
Kilburn <i>Station</i>	0521	0814	1210	1711	2013	2322
Kilburn <i>High Road Station</i>	0527	0826	1221	1721	2020	2329
Maida Vale <i>Elgin Avenue</i>	0530	0829	1225	1725	2023	2332
Edgware Road <i>Station</i>	0535	0834	1231	1731	2028	2336
Edgware Road <i>Praed Street</i>	0536	0836	1233	1733	2030	2337
Marble Arch <i>Edgware Road</i>	0539	0840	1238	1739	2036	2342
Hyde Park Corner <i>Hilton Hotel</i>	0541	0842	1241	1742	2039	2345
Hyde Park Corner <i>Grosvenor Place</i>	0543	0844	1243	1744	2041	2347
<b>Victoria Station</b> <i>Terminus Place</i>	0548	0850	1249	1750	2047	2352
	33 minutes	47 minutes	49 minutes	48 minutes	42 minutes	37 minutes

**Service Specification for Route Nos. 16 & N16 - 17/11/2008**

2. Victoria Station, Terminus Place to Cricklewood, Edgware Road, Angley Road

	Typical early morning	Longest morning peak	Typical interpeak	Longest afternoon peak	Typical early evening	Typical late evening
<b>Victoria Station Terminus Place</b>	0555	0805	1159	1700	2000	2305
Hyde Park Corner Grosvenor Place	0559	0809	1203	1704	2004	2309
Hyde Park Corner Hilton Hotel	0601	0811	1205	1706	2006	2311
Marble Arch Edgware Road	0604	0814	1209	1710	2009	2314
Edgware Road Praed Street	0607	0819	1216	1718	2017	2320
Edgware Road Station	0608	0820	1218	1720	2019	2321
Maida Vale Elgin Avenue	0612	0825	1224	1725	2024	2326
Kilburn High Road Station	0615	0828	1228	1729	2028	2329
Kilburn Station	0618	0833	1233	1735	2032	2333
Cricklewood Broadway Crown	0623	0843	1243	1751	2041	2339
<b>Cricklewood Edgware Road/Angley Road</b>	0626	0848	1248	1757	2046	2342
	31 minutes	43 minutes	49 minutes	57 minutes	46 minutes	37 minutes

Service Specification for Route Nos. 16 & N16 - 17/11/2008

**SATURDAYS**

1. Cricklewood Edgware Road, Mora Road to Victoria Station, Terminus Place

	Typical early morning	Typical late AM shopping period	Typical PM shopping period	Typical early evening	Typical late evening
<b>Cricklewood Edgware Road, Mora Road</b>	0515	1101	1502	1958	2315
Cricklewood Broadway Crown	0518	1105	1507	2002	2319
Kilburn Station	0521	1109	1512	2006	2322
Kilburn High Road Station	0527	1118	1522	2013	2329
Maida Vale Elgin Avenue	0530	1121	1526	2016	2332
Edgware Road Station	0535	1126	1532	2021	2336
Edgware Road Praed Street	0536	1128	1534	2022	2337
Marble Arch Edgware Road	0539	1133	1539	2027	2342
Hyde Park Corner Hilton Hotel	0541	1136	1542	2030	2345
Hyde Park Corner Grosvenor Place	0543	1138	1544	2032	2347
<b>Victoria Station Terminus Place</b>	0548	1143	1549	2037	2352
	33 minutes	42 minutes	47 minutes	39 minutes	37 minutes

2. Victoria Station, Terminus Place to Cricklewood, Edgware Road, Angley Road

	Typical early morning	Typical late AM shopping period	Typical PM shopping period	Typical early evening	Typical late evening
<b>Victoria Station Terminus Place</b>	0555	1105	1459	1955	2305
Hyde Park Corner Grosvenor Place	0559	1109	1504	1959	2309
Hyde Park Corner Hilton Hotel	0601	1111	1506	2001	2311
Marble Arch Edgware Road	0604	1114	1509	2004	2314
Edgware Road Praed Street	0607	1120	1515	2010	2320
Edgware Road Station	0608	1122	1517	2012	2321
Maida Vale Elgin Avenue	0612	1127	1523	2017	2326
Kilburn High Road High Road Station	0615	1131	1528	2021	2329
Kilburn Station	0618	1137	1534	2025	2333
Cricklewood Broadway Crown	0623	1152	1549	2034	2339
<b>Cricklewood Edgware Road, Angley Road</b>	0626	1157	1554	2039	2342
	31 minutes	52 minutes	55 minutes	44 minutes	37 minutes

**Service Specification for Route Nos. 16 & N16 - 17/11/2008**

**SUNDAYS**

1. Cricklewood, Edgware Road, Mora Road to Victoria Station, Terminus Place

	Typical Early morning	Typical late AM shopping period	Typical PM shopping period	Typical early evening	Typical late evening
<b>Cricklewood</b> <i>Edgware Road, Mora Road</i>	0515	1103	1507	1958	2315
Cricklewood <i>Broadway Crown</i>	0518	1107	1512	2002	2319
Kilburn <i>LU Station</i>	0521	1110	1517	2006	2322
Kilburn <i>High Road Station</i>	0527	1119	1527	2013	2329
Maida Vale <i>Elgin Avenue</i>	0530	1123	1531	2016	2332
Edgware Road <i>Station</i>	0535	1128	1536	2021	2336
Edgware Road <i>Praed Street</i>	0536	1130	1538	2022	2337
Marble Arch <i>Edgware Road</i>	0539	1134	1543	2027	2342
Hyde Park Corner <i>Hilton Hotel</i>	0541	1137	1546	2030	2345
Hyde Park Corner <i>Grosvenor Place</i>	0543	1139	1548	2032	2347
<b>Victoria Station</b> <i>Terminus Place</i>	0548	1144	1553	2037	2352
	33	41	46	39	37
	minutes	minutes	minutes	minutes	minutes

**Service Specification for Route Nos. 16 & N16 - 17/11/2008**

**2. Victoria Station, Terminus Place to Cricklewood, Edgware Road, Angley Road**

	Typical Early morning	Typical late AM shopping period	Typical PM shopping period	Typical early evening	Typical late evening
<b>Victoria Station Terminus Place</b>	0555	1100	1505	1955	2305
Hyde Park Corner <i>Grosvenor Place</i>	0559	1104	1510	1959	2309
Hyde Park Corner <i>Hilton Hotel</i>	0601	1106	1512	2001	2311
Marble Arch <i>Edgware Road</i>	0604	1109	1515	2004	2314
Edgware Road <i>Praed Street</i>	0607	1113	1521	2010	2320
Edgware Road <i>Station</i>	0608	1115	1523	2011	2321
Maida Vale <i>Elgin Avenue</i>	0612	1119	1529	2016	2326
Kilburn High Road <i>Station</i>	0615	1124	1534	2020	2329
Kilburn <i>Station</i>	0618	1130	1540	2024	2333
Cricklewood Broadway <i>Crown</i>	0623	1137	1552	2033	2339
<b>Cricklewood Edgware Road, Angley Road</b>	0626	1141	1557	2038	2342
	31	41	52	43	37
	minutes	minutes	minutes	minutes	minutes

The above tables have been included to assist Tenderers. They represent the information currently available to the Corporation. Tenderers should form their own views about what is appropriate in terms of running times. (See Section 8.)



**APPENDIX B: SAMPLE RUNNING TIMES (Nightly)**  
(based on current schedule)

**MONDAY – THURSDAY NIGHT**

1. Edgware Station, Bus Station to Victoria, Terminus Place

	Typical nightly
<b>Edgware Station</b> <i>Bus Station</i>	0005
Burnt Oak Broadway	0009
Colindale Avenue <i>Edgware Road</i>	0012
West Hendon <i>Herbert Road</i>	0016
Cricklewood <i>Bus Garage</i>	0020
Cricklewood Broadway Crown	0022
Kilburn <i>LU Station</i>	0024
Kilburn High Road <i>Station</i>	0028
Maida Vale <i>Elgin Avenue</i>	0031
Edgware Road <i>Praed Street</i>	0036
Marble Arch <i>Edgware Road</i>	0040
Hyde Park Corner <i>Grosvenor Place</i>	0043
<b>Victoria Station</b> <i>Terminus Place</i>	0047
	42
	minutes

2. Victoria Station, Terminus Place to Edgware Station, Bus Station

	Typical nightly
<b>Victoria Station</b> <i>Terminus Place</i>	0055
Hyde Park Corner <i>Grosvenor Place</i>	0059
Marble Arch <i>Edgware Road</i>	0104
Edgware Road <i>Praed Street</i>	0108
Maida Vale <i>Elgin Avenue</i>	0111
Kilburn <i>High Road Station</i>	0114
Kilburn <i>LU Station</i>	0117
Cricklewood Broadway Crown	0120
Cricklewood <i>Bus Garage</i>	0122
West Hendon Broadway <i>Herbert Road</i>	0126
Colindale Avenue <i>Edgware Road</i>	0132
Burnt Oak Broadway	0135
<b>Edgware Station</b> <i>Bus Station</i>	0139
	44
	minutes

**FRIDAY NIGHT**1. Edgware Station, Bus Station to Victoria Station, Terminus Place

	<u>Typical nightly</u>
<b>Edgware Station Bus Station</b>	0000
Burnt Oak Broadway	0004
Colindale Avenue <i>Edgware Road</i>	0007
West Hendon Broadway <i>Herbert Road</i>	0011
Cricklewood Bus Garage	0015
Cricklewood Broadway <i>Crown</i>	0017
Kilburn <i>LU Station</i>	0019
Kilburn High Road Station	0025
Maida Vale <i>Elgin Avenue</i>	0028
Edgware Road <i>Praed Street</i>	0033
Marble Arch <i>Edgware Road</i>	0039
Hyde Park Corner <i>Grosvenor Place</i>	0042
<b>Victoria Station Terminus Place</b>	<u>0047</u>
	47
	minutes

2. Victoria Station, Terminus Place to Edgware Station, Bus Station

	<u>Typical nightly</u>
<b>Victoria Station Terminus Place</b>	0055
Hyde Park Corner <i>Grosvenor Place</i>	0059
Marble Arch <i>Edgware Road</i>	0104
Edgware Road <i>Praed Street</i>	0110
Maida Vale <i>Edgware Road</i>	0113
Kilburn High Road <i>Station</i>	0116
Kilburn <i>LU Station</i>	0121
Cricklewood Broadway <i>Crown</i>	0124
Cricklewood <i>Bus Garage</i>	0126
West Hendon <i>Herbert Road</i>	0130
Colindale Avenue <i>Edgware Road</i>	0132
Burnt Oak Broadway	0135
<b>Edgware Station Bus Station</b>	<u>0139</u>
	44
	minutes

## SATURDAY NIGHT

### 1. Edgware Station, Bus Station to Victoria Station, Terminus Place

	<u>Typical nightly</u>
<b>Edgware Station Bus Station</b>	0000
Burnt Oak <i>Broadway</i>	0004
Colindale Avenue <i>Edgware Road</i>	0007
West Hendon <i>Broadway Herbert Road</i>	0011
Cricklewood <i>Bus Garage</i>	0015
Cricklewood <i>Broadway Crown</i>	0017
Kilburn <i>LU Station</i>	0019
Kilburn High Road Station	0025
Maida Vale <i>Elgin Avenue</i>	0028
Edgware Road <i>Praed Street</i>	0033
Marble Arch <i>Edgware Road</i>	0039
Hyde Park Corner <i>Grosvenor Place</i>	0042
<b>Victoria Station Terminus Place</b>	<u>0046</u>
	46
	minutes

### 2. Victoria Station, Terminus Place to Edgware Station, Bus Station

	<u>Typical nightly</u>
<b>Victoria Station Terminus Place</b>	0055
Hyde Park Corner <i>Grosvenor Place</i>	0059
Marble Arch <i>Edgware Road</i>	0104
Edgware Road <i>Praed Street</i>	0110
Kilburn High Road Station	0116
Kilburn <i>LU Station</i>	0121
Cricklewood <i>Broadway Crown</i>	0124
Cricklewood <i>Bus Garage</i>	0126
West Hendon <i>Broadway Herbert Road</i>	0130
Colindale Avenue <i>Edgware Road</i>	0132
Burnt Oak <i>Broadway</i>	0135
<b>Edgware Station Bus Station</b>	<u>0139</u>
	44
	minutes

**SUNDAY NIGHT**1. Edgware Station, Bus Station to Victoria Station, Terminus Place

	Typical nightly
<b>Edgware Station</b> <i>Bus Station</i>	0005
Burnt Oak Broadway	0009
Colindale Avenue <i>Edgware Road</i>	0012
West Hendon Broadway <i>Herbert Road</i>	0016
Cricklewood <i>Bus Garage</i>	0020
Cricklewood Broadway <i>Crown</i>	0022
Kilburn <i>LU Station</i>	0024
Kilburn High Road Station	0028
Maida Vale <i>Elgin Road</i>	0031
Edgware Road <i>Praed Street</i>	0036
Marble Arch <i>Edgware Road</i>	0040
Hyde Park Corner <i>Grosvenor Place</i>	0043
<b>Victoria Station</b> <i>Terminus Place</i>	0047
	<hr/>
	42
	<hr/>
	minutes

2. Victoria Station, Terminus Place to Edgware Station, Bus Station

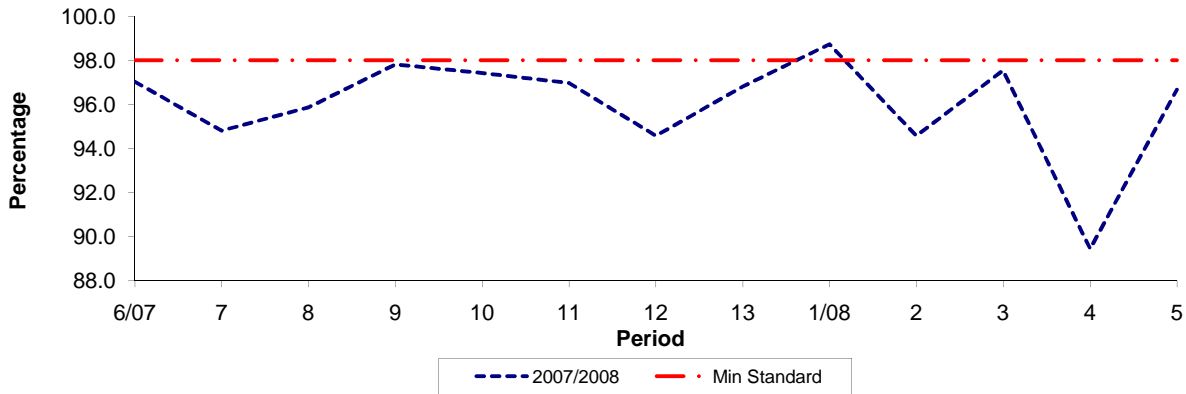
	Typical nightly
<b>Victoria Station</b> <i>Terminus Place</i>	0055
Hyde Park Corner <i>Grosvenor Place</i>	0059
Marble Arch <i>Edgware Road</i>	0104
Edgware Road <i>Praed Street</i>	0108
Maida Vale <i>Elgin Avenue</i>	0111
Kilburn High Road Station	0114
Kilburn <i>LU Station</i>	0117
Cricklewood Broadway <i>Crown</i>	0120
Cricklewood <i>Bus Garage</i>	0122
West Hendon Broadway <i>Herbert Road</i>	0126
Colindale Avenue <i>Edgware Road</i>	0128
Burnt Oak Broadway	0131
<b>Edgware Station</b> <i>Bus Station</i>	0135
	<hr/>
	40
	<hr/>
	minutes

The above tables have been included to assist Tenderers. They represent the information currently available to the Corporation. Tenderers should form their own views about what is appropriate in terms of running times. (See Section 8.)

**PART B - PERFORMANCE STATISTICS**

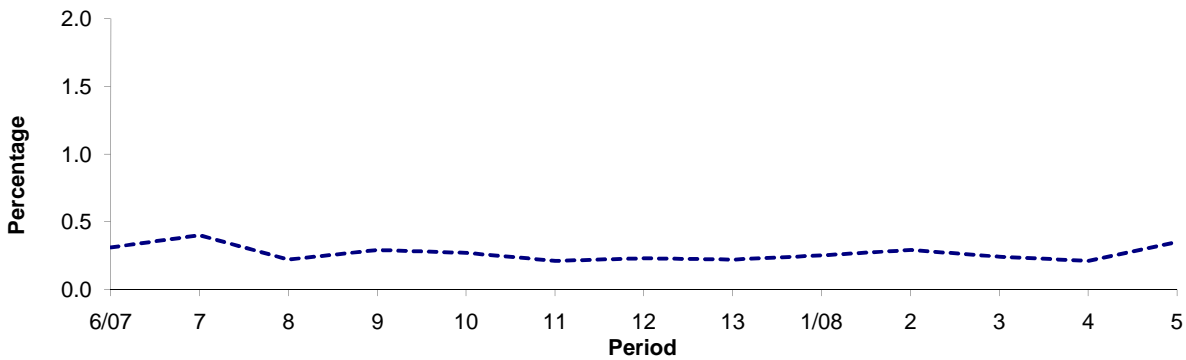
**Route 16**

**Mileage Operated**



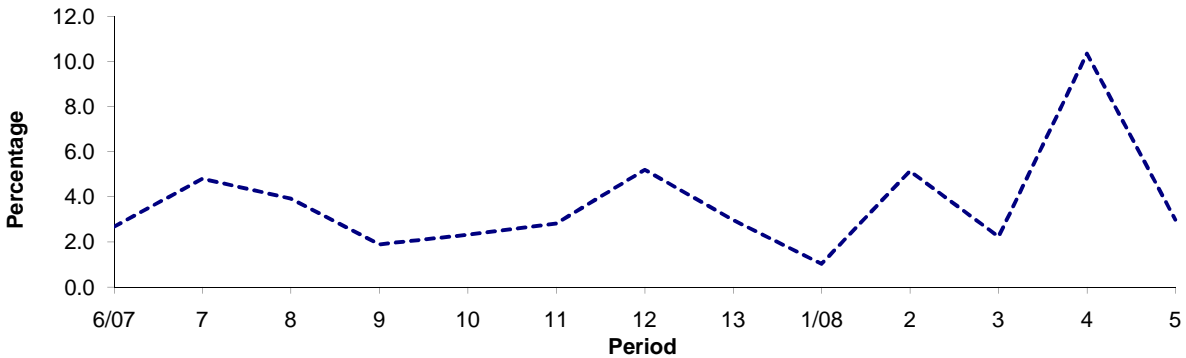
Period	6/07	7	8	9	10	11	12	13	1/08	2	3	4	5
2007/2008	97.02	94.80	95.86	97.81	97.41	96.97	94.57	96.81	98.72	94.57	97.53	89.45	96.66
Min Standard	98.00	98.00	98.00	98.00	98.00	98.00	98.00	98.00	98.00	98.00	98.00	98.00	98.00

**Deductible Mileage**



Period	6/07	7	8	9	10	11	12	13	1/08	2	3	4	5
2007/2008	0.31	0.40	0.22	0.29	0.27	0.21	0.23	0.22	0.25	0.29	0.24	0.21	0.35

**Non Deductible Mileage**



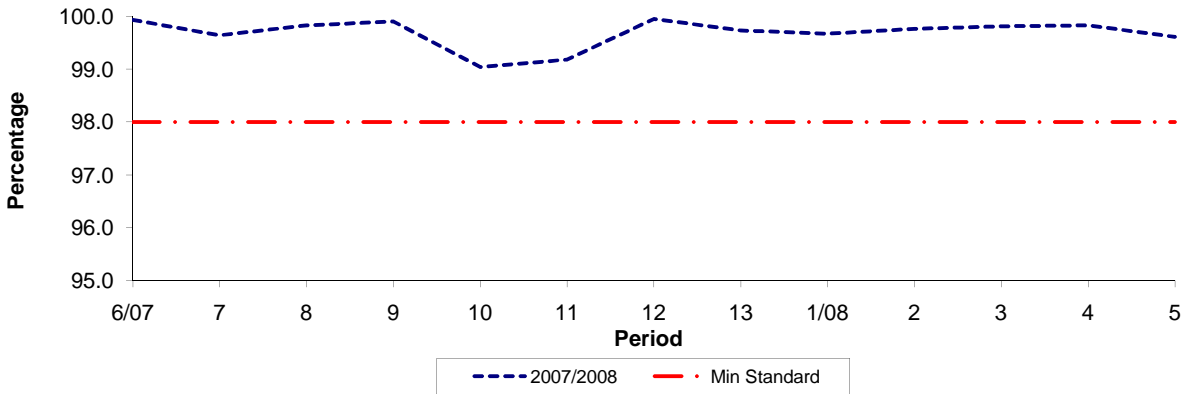
Period	6/07	7	8	9	10	11	12	13	1/08	2	3	4	5
2007/2008	2.67	4.80	3.92	1.90	2.32	2.82	5.20	2.97	1.03	5.14	2.23	10.34	2.99

**Note :** Mileage is based on 4 weeks data

**PART B - PERFORMANCE STATISTICS**

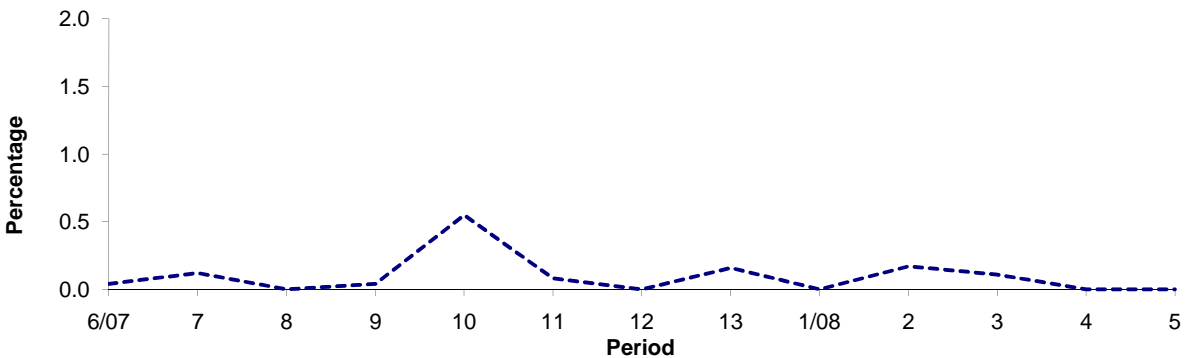
**Route N16**

**Mileage Operated**



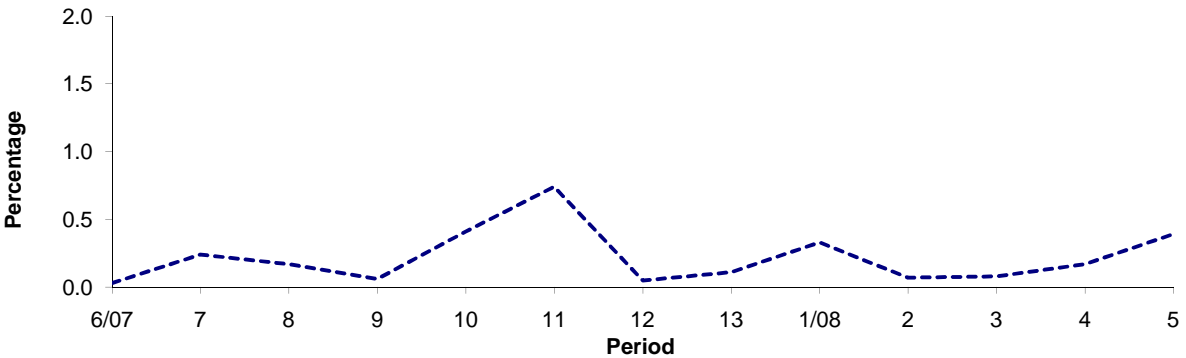
Period	6/07	7	8	9	10	11	12	13	1/08	2	3	4	5
2007/2008	99.93	99.64	99.83	99.90	99.04	99.18	99.95	99.73	99.67	99.76	99.81	99.83	99.61
Min Standard	98.00	98.00	98.00	98.00	98.00	98.00	98.00	98.00	98.00	98.00	98.00	98.00	98.00

**Deductible Mileage**



Period	6/07	7	8	9	10	11	12	13	1/08	2	3	4	5
2007/2008	0.04	0.12	0.00	0.04	0.55	0.08	0.00	0.16	0.00	0.17	0.11	0.00	0.00

**Non Deductible Mileage**

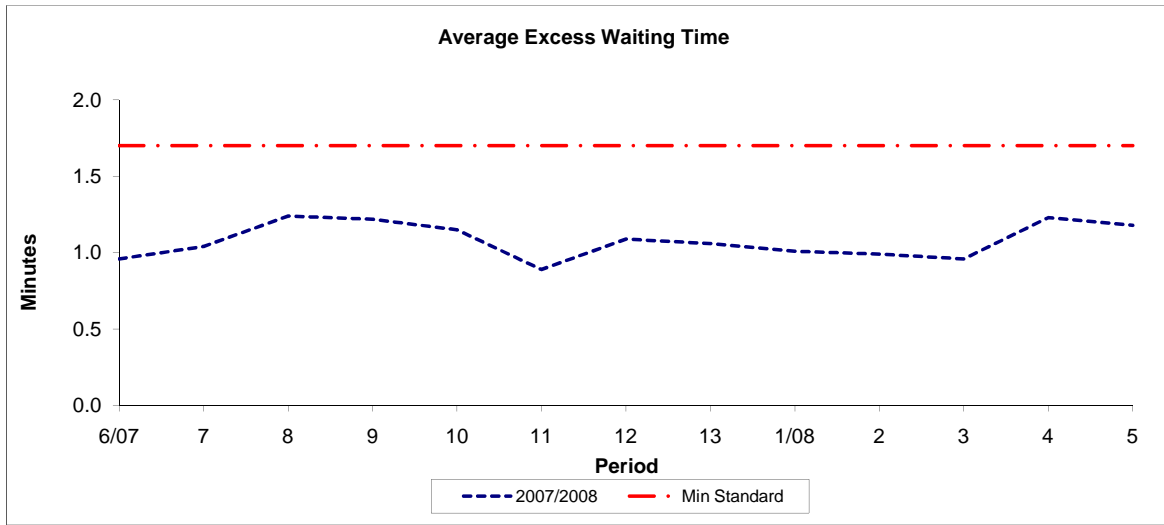


Period	6/07	7	8	9	10	11	12	13	1/08	2	3	4	5
2007/2008	0.03	0.24	0.17	0.06	0.41	0.74	0.05	0.11	0.33	0.07	0.08	0.17	0.39

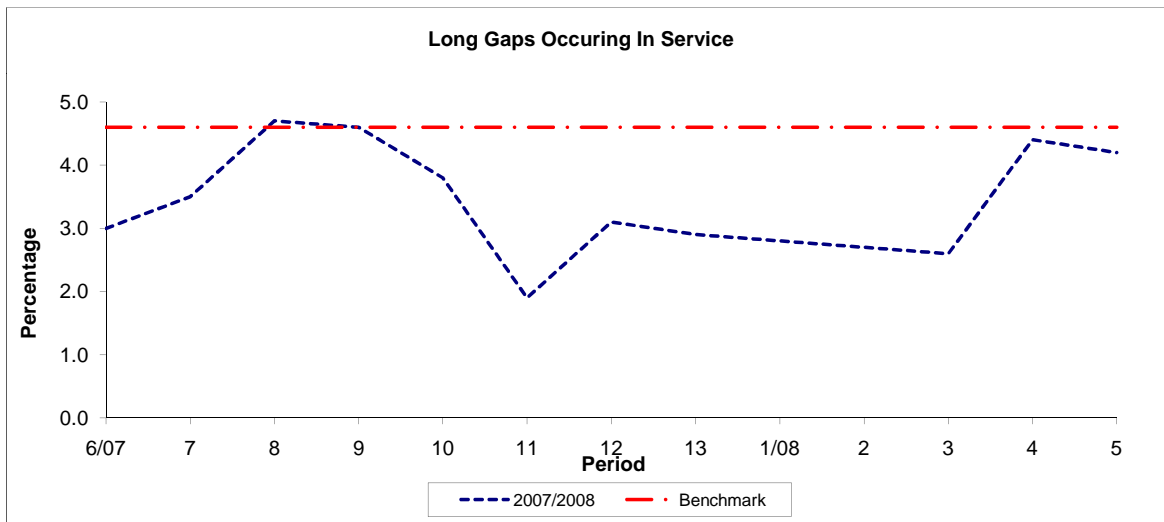
**Note :** Mileage is based on 4 weeks data

**PART B - PERFORMANCE STATISTICS**

**Route 16**



Period	6/07	7	8	9	10	11	12	13	1/08	2	3	4	5
2007/2008	0.96	1.04	1.24	1.22	1.15	0.89	1.09	1.06	1.01	0.99	0.96	1.23	1.18
Min Standard	1.70	1.70	1.70	1.70	1.70	1.70	1.70	1.70	1.70	1.70	1.70	1.70	1.70

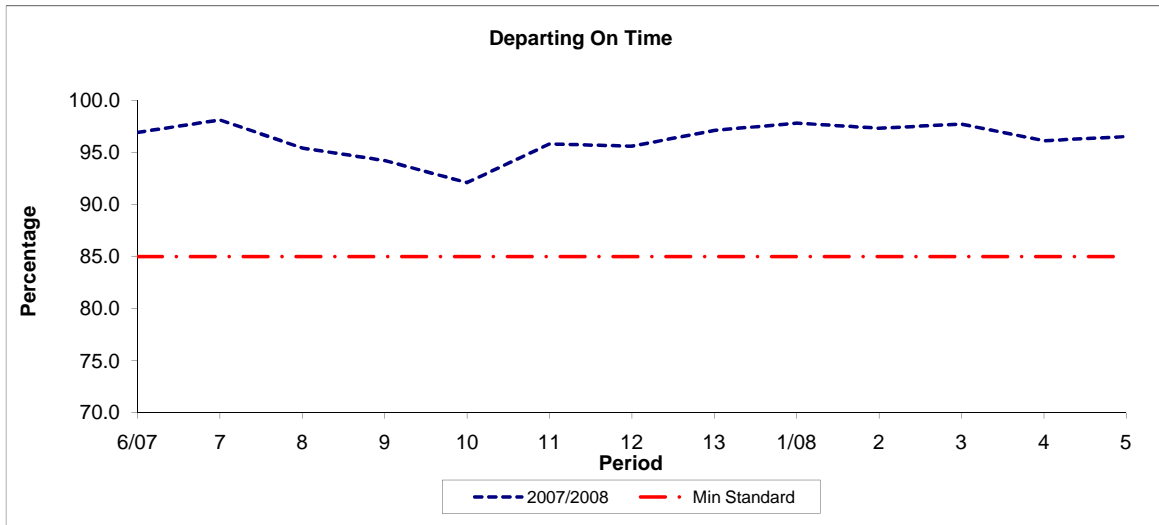


Period	6/07	7	8	9	10	11	12	13	1/08	2	3	4	5
2007/2008	3.00	3.50	4.70	4.60	3.80	1.90	3.10	2.90	2.80	2.70	2.60	4.40	4.20
Benchmark	4.60	4.60	4.60	4.60	4.60	4.60	4.60	4.60	4.60	4.60	4.60	4.60	4.60

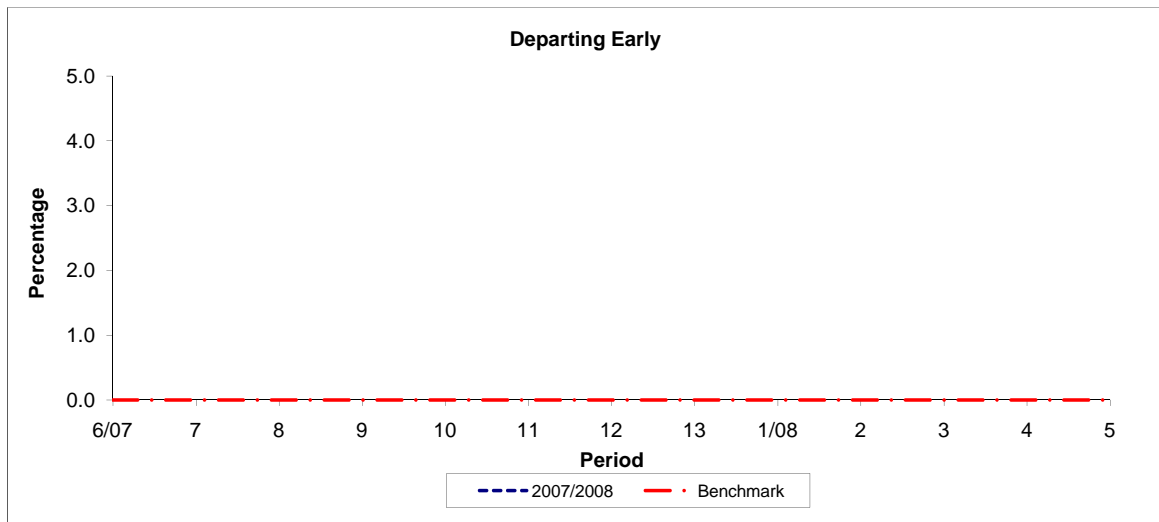
**Note :** Reliability is based on 12 weeks rolling data

**PART B - PERFORMANCE STATISTICS**

**Route N16**



Period	6/07	7	8	9	10	11	12	13	1/08	2	3	4	5
2007/2008	96.90	98.10	95.40	94.20	92.10	95.80	95.60	97.10	97.80	97.30	97.70	96.10	96.50
Min Standard	85.00	85.00	85.00	85.00	85.00	85.00	85.00	85.00	85.00	85.00	85.00	85.00	85.00



Period	6/07	7	8	9	10	11	12	13	1/08	2	3	4	5
2007/2008													
Benchmark	0.00	0.00	0.00	0.00	0.00	0.00	0.00	0.00	0.00	0.00	0.00	0.00	0.00

**Note :** Reliability is based on 12 weeks rolling data