

## 7. Service Specification

Route: 7/N7

Contract Reference QC44301

This Service Specification forms section 7 of the ITT and should be read in conjunction with the ITT document, Version 1 dated 29 September 2011.

You are formally invited to tender for the provision of the bus service detailed below and in accordance with this Service Specification. Tenderers must ensure that a Compliant Tender is submitted and this will only be considered for evaluation if all parts of the Tender documents, as set out in section 11, have been received by the Corporation by the Date of Tender. The Tender must be fully completed in the required format, in accordance with the Instructions to Tenderers. A Compliant Tender must comply fully with the requirements of the Framework Agreement; adhere to the requirements of the Service Specification; and reflect the price of operating the Services with new vehicles.

<b>Terminus Points</b>	Route No. 7: East Acton, Brunel Road to Russell Square, North Side Route No. N7: Northolt Station to Russell Square, North Side
<b>Contract Basis</b>	Incentivised
<b>Commencement Date</b>	21 <sup>st</sup> June 2014
<b>Vehicle Type</b>	87 capacity, dual door, double deck buses
<b>Current Maximum Approved Dimensions</b>	10.6 metres long and 2.55 metres wide
<b>New Vehicles Mandatory</b>	Yes
<b>Hybrid Price Required</b>	Yes
<b>Sponsored Route</b>	No
<b>Advertising Rights</b>	Operator
<b>Minimum Performance Standard - Route No. 7</b>	Average Excess Wait Time - No more than 1.10 minutes
<b>Extension Threshold - Route No. 7</b>	Average Excess Wait Time Threshold - 0.95 minutes
<b>Minimum Operated Mileage Standard - Route No. 7</b>	No less than 98.00%
<b>Departing On Time - Route No. N7</b>	Departing on Time - No less than 86.00%
<b>Minimum Operated Mileage Standard - Route No. N7</b>	No less than 99.00%

The Date of Tender for this ITT is: No later than 12 Noon on Monday 3<sup>rd</sup> June 2013

*Tenderers should refer to section 3 of Part A for the Service Specification Explanatory Notes and Appendix B of section 5 for the Example Service Specification of the ITT document.*

## **SERVICE SPECIFICATION**

- 1) SERVICE SPEC - ROUTE SPECIFICATION INFORMATION
- 2) NOTES
- 3) SCHEDULE REQUIREMENTS & PINCHPOINTS
- 4) OPERATIONAL CONSIDERATIONS
- 5) ROUTE RECORD, CURRENT PERFORMANCE, QSI BY TIME OF DAY, IBUS MILEAGE & QSI POINTS

## 2) NOTES

### **Proposed Changes:**

At this time, the Corporation expects to implement a change to the existing service prior to the commencement of the new Route Agreement for Route Nos. 7 & N7.

- From 12<sup>th</sup> February 2012, buses have been diverted at Paddington due to the closure by Crossrail works of Eastbourne Terrace. Ex East Acton, Brunel Road, buses are diverted from Eastbourne Terrace via Cleveland Terrace, Westbourne Terrace and Craven Road to Praed Street to re-join normal line of routeing. Ex Russell Square, North Side, buses are diverted from Praed Street via Craven Road and Westbourne Terrace to Bishop's Bridge Road to re-join normal line-of-routeing. The diversion is expected to end on 14<sup>th</sup> February 2014.
- **Tenderers should refer to the schedules dated 06/11/2010 rather than the current temporary diversion schedules.**

Tenderers should note that the following alterations (subject to consultation) are proposed as part of this Service Specification for introduction with the new Route Agreement:

- Mondays to Fridays AM peak frequencies are reduced from every 6-7 minutes (9 buses per hour) to every 8 minutes.
- Mondays to Fridays interpeak, PM peak and Saturday daytime frequencies are reduced from every 7-8 minutes (8 buses per hour) to every 8 minutes.
- Ex Northolt Station on weeknights, the first departure is re-timed from 2328 to 2335. The effect of this eliminates the current widening.
- Ex Northolt Station, weekend departures have been standardised to match weeknight departures.
- **Tenderers must identify the cost of the Nightly element of this service separately.**
- The Boxing Day service should match the Sunday service.
- **Tenderers must identify the cost of the Boxing Day element of this service separately.**
- **Please note, a special schedule for the Sunday and Monday of the Notting Hill Carnival will be required (See Section 4).**

**Operators should provide the following prices:**

1. Annual diesel price - based on minimum 5 year contract.
2. Annual hybrid price - based on minimum 5 year contract.
3. Annual hybrid price - based on minimum 7 year contract.
4. Annual hybrid price - with upfront payment of capital difference between diesel and hybrid for 5 year contract.
5. Annual hybrid price - with upfront payment of capital difference between diesel and hybrid for 7 year contract.

***All tender prices should be based on the gross fuel cost exclusive of BSOG payments which will not be claimable from DfT after 1<sup>st</sup> October 2013.***

### 3) SCHEDULE REQUIREMENTS & PINCHPOINTS

#### 3.1) MONDAY TO FRIDAY SCHEDULE REQUIREMENTS & PINCHPOINTS

East Acton, Brunel Road to Russell Square, North Side			Russell Square, North Side to East Acton, Brunel Road		
First departure no later than 0525.			First departure no later than 0545.		
0520 - 0625	Every 10 minutes		0540 - 0645	Every 10 minutes	
0626 - 1830	Every 8 minutes		0646 - 1930	Every 8 minutes	
1831 - 2005	Every 10 minutes		1931 - 2030	Every 10 minutes	
2006 - 2345	Every 12 minutes		2031 - 0010	Every 12 minutes	
Last departure no earlier than 2340.			Last departure no earlier than 0005.		
<b>Pinchpoints</b>					
Oxford Circus, Oxford Street (West Side)	0700 - 0900	8 minutes	Ladbroke Grove Station	0715 - 0915	8 minutes
	1500 - 1630	8 minutes		1500 - 1630	8 minutes

#### 3.2) SATURDAY AND GOOD FRIDAY SCHEDULE REQUIREMENTS & PINCHPOINTS

East Acton, Brunel Road to Russell Square, North Side			Russell Square, North Side to East Acton, Brunel Road		
First departure no later than 0525.			First departure no later than 0545.		
0520 - 0755	Every 15 minutes		0540 - 0900	Every 15 minutes	
0756 - 0845	Every 10 minutes		0901 - 0930	Every 10 minutes	
0846 - 1800	Every 8 minutes		0931 - 1830	Every 8 minutes	
1801 - 1840	Every 10 minutes		1831 - 1950	Every 10 minutes	
1841 - 2345	Every 12 minutes		1951 - 0010	Every 12 minutes	
Last departure no earlier than 2340.			Last departure no earlier than 0005.		
<b>Pinchpoints</b>					
Oxford Circus, Oxford Street (West Side)	0925 - 1105	8 minutes	Ladbroke Grove Station	0935 - 1005	10 minutes
				1006 - 1105	8 minutes

**3) SCHEDULE REQUIREMENTS & PINCHPOINTS - continued**

**3.3) SUNDAY AND PUBLIC HOLIDAY SCHEDULE REQUIREMENTS & PINCHPOINTS**

East Acton, Brunel Road to Russell Square, North Side			Russell Square, North Side to East Acton, Brunel Road		
First departure no later than 0525.			First departure no later than 0545.		
0520 - 0910	Every 15 minutes		0540 - 0930	Every 15 minutes	
0911 - 2345	Every 12 minutes		0931 - 0010	Every 12 minutes	
Last departure no earlier than 2340.			Last departure no earlier than 0005.		
<b>Pinchpoints</b>					
Oxford Circus, Oxford Street (West Side)	1010 - 1135	12 minutes	Ladbroke Grove Station	1000 - 1125	12 minutes

**Tenderers must identify the cost of the Boxing Day element of this service separately.**

**3.4) NIGHTLY**

Northolt Station to Russell Square, North Side			Russell Square, North Side to Northolt Station		
First departure no later than 2335.			First departure no later than 0020.		
2330 - 0440	Every 30 minutes		0015 - 0525	Every 30 minutes	
Last departure no earlier than 0435.			Last departure no earlier than 0520.		

**Tenderers must identify the cost of the Nightly element of this service separately.**

#### **4) OPERATIONAL CONSIDERATIONS**

- 4.1) Route No. 7 should be separated from Route No. 23 between Westbourne Grove, Chepstow Road and Oxford Circus, Oxford Street (West Side) during all periods, where possible.
- 4.2) Route No. 7 should interwork with Route No. N7 to form a seamless 24 hour service between Wormwood Scrubs, Pavilion Hotel and Russell Square, North Side.
- 4.3) Route Nos. 7 & N7 can suffer from unpredictable traffic delays in the Ladbroke Grove and the Oxford Circus areas.
- 4.4) The Notting Hill Carnival is an annual event held in the Notting Hill area over the late Summer Bank Holiday period and affects several LBSL contracted bus services. The arrangements for serving the area are flexible and depend on what advance information is provided by bodies such as the Metropolitan Police. Prior to the event, London Buses Officials will discuss service provision with those Operators who are involved.
- 4.5) Crossrail will connect the City, Canary Wharf, the West End and Heathrow Airport to commuter areas east and west of the capital. Major construction of the railway began in 2010, with services expected to commence in 2018. The construction impacts of Crossrail could affect Route Nos. 7 & N7 and it is anticipated that some passenger demand for Route Nos. 7 & N7 may shift to this line when it opens. Route Nos. 7 & N7 will be reviewed closer to the opening date.

#### **5) ROUTE RECORD, CURRENT PERFORMANCE, QSI BY TIME OF DAY, IBUS MILEAGE & QSI POINTS**

- 5.1) ROUTE RECORD  
As per Busnet Printout.
- 5.2) CURRENT PERFORMANCE  
As per current print out.
- 5.3) QSI BY TIME OF DAY  
As per current print out.
- 5.4) IBUS MILEAGE & QSI POINTS  
As per current print out.

# LONDON BUSES - ROUTE DESCRIPTION

## ROUTE 7: East Acton, Telford Way - Russell Square

**Date of Structural Change:** 21 June 2014.

**Date of Service Change:** 21 June 2014.

**Reason for Issue:** New Tender.

### **STREETS TRAVERSED**

**Towards Russell Square:** Brunel Road, Old Oak Common Lane, Du Cane Road, Wood Lane, North Pole Road, St Quintin Gardens, Barlby Road, St Mark's Road, Cambridge Gardens, Ladbrooke Grove, Westbourne Park Road, Chepstow Road, Westbourne Grove, Bishop's Bridge Road, Eastbourne Terrace, Praed Street, Edgware Road, Marble Arch, Oxford Street, Tottenham Court Road, Great Russell Street, Montague Street, Russell Square.

**Towards East Acton, Telford Way:** Russell Square, Bedford Place, Great Russell Street, Bloomsbury Street, New Oxford Street, Oxford Street, Park Lane, Cumberland Gate, Marble Arch, Edgware Road, Sussex Gardens, Norfolk Place, Praed Street, Eastbourne Terrace, Bishop's Bridge Road, Westbourne Grove, Chepstow Road, Westbourne Park Road, Ladbrooke Grove, Cambridge Gardens, St Mark's Road, Barlby Road, Highlever Road, North Pole Road, Wood Lane, Du Cane Road, Old Oak Common Lane, Brunel Road, Telford Way.

## **AUTHORISED STANDS, CURTAILMENT POINTS, & BLIND DESCRIPTIONS**

Please note that only stands, curtailment points, & blind descriptions as detailed in this contractual document may be used.

### **EAST ACTON, TELFORD WAY**

Public stand for three buses on the east side of Telford Way, at the eastern junction with Brunel Road, extending 30 metres north.

When full buses must use the Brunel Road stand.

Buses proceed from Telford Way direct to stand, departing via Telford Way to Brunel Road. Set down in Telford Way, at Stop X2 (26505 - Telford Way, Last Stop on LOR: 26505 - Telford Way) and pick up in Brunel Road, at Stop O (26194 - Brunel Road, First Stop on LOR: 20975 - The Fairway).

AVAILABILITY:	At any time.
OPERATING RESTRICTIONS:	No more than 2 buses on Route 7 should be scheduled to stand at any one time.
MEAL RELIEFS:	No meal relief vehicles to stand at any time.
FERRY VEHICLES:	No ferry vehicles to park on stand at any time.
BLIND DISPLAY:	East Acton.
OTHER INFORMATION:	LBSL toilet facilities available 24 hours.

### **EAST ACTON, BRUNEL ROAD (from RUSSELL SQUARE)**

Public stand in two portions for six buses on the north side of Brunel Road, commencing two metres from the junction with Old Oak Common Lane and extending 60 metres to the eastern junction with Telford Way.

Buses proceed from Telford Way via Brunel Road to stand, departing to Brunel Road. Set down in Telford Way, at Stop X2 (26505 - Telford Way, Last Stop on LOR: 26505 - Telford Way) and pick up in Brunel Road, at Stop O (26194 - Brunel Road).

AVAILABILITY:	At any time.
OPERATING RESTRICTIONS:	None.
MEAL RELIEFS:	No meal relief vehicles to stand at any time.
FERRY VEHICLES:	No ferry vehicles to park on stand at any time.
BLIND DISPLAY:	East Acton.
OTHER INFORMATION:	Overflow stand to be used only when Telford Way stand is full.



### **EAST ACTON, DU CANE ROAD (from RUSSELL SQUARE)**

Buses proceed from Du Cane Road via Fitzneal Street, Foliot Street and Old Oak Common Lane departing to Du Cane Road. Set down in Du Cane Road, at Stop G (11573 - Wulfstan Street, Last Stop on LOR: 11573 - Wulfstan Street) and pick up in Du Cane Road, at Stop C (11576 - East Acton Station<> / Fitzneal Street, First Stop on LOR: 11576 - East Acton Station<> / Fitzneal Street).

AVAILABILITY: At any time.  
OPERATING RESTRICTIONS: **Turning Point Only - Buses must not stand**  
BLIND DISPLAY: East Acton.

### **BARLBY ROAD, ST. QUINTIN GARDENS (from RUSSELL SQUARE)**

Buses proceed from Barlby Road via St Quintin Gardens and Highlever Road departing to Barlby Road. Set down in Barlby Road, L (BP2865 - Highlever Road, Last Stop on LOR: BP2865 - Highlever Road) and pick up in Barlby Road, U (36798 - Highlever Road, First Stop on LOR: 36798 - Highlever Road).

AVAILABILITY: At any time.  
OPERATING RESTRICTIONS: **Turning Point Only - Buses must not stand**  
BLIND DISPLAY: North Pole Road.

### **ST. MARK'S ROAD, ST. QUINTIN AVENUE (from RUSSELL SQUARE)**

Buses proceed from St Mark's Road departing to St Mark's Road. Set down in St Mark's Road, F (11552 - Oxford Gardens, Last Stop on LOR: 11552 - Oxford Gardens) and pick up in St Mark's Road, C (11551 - Oxford Gardens, First Stop on LOR: 11551 - Oxford Gardens).

AVAILABILITY: At any time.  
OPERATING RESTRICTIONS: **Turning Point Only - Buses must not stand**  
BLIND DISPLAY: Ladbroke Grove.

### **WESTBOURNE PARK ROAD, GREAT WESTERN ROAD (from RUSSELL SQUARE)**

Public stand for one bus at rear of bus stop bay (stop letter N) on north side of Westbourne Park Road, commencing 11 metres east of a point opposite the eastern kerbline of Shrewsbury Road.

Buses proceed from Chepstow Road via Talbot Road, Shrewsbury Road and Westbourne Park Road to stand, departing via Westbourne Park Road to Chepstow Road. Set down in Chepstow Road, at Stop PC (1263 - Artesian Road, Last Stop on LOR: 1263 - Artesian Road) and pick up in Chepstow Road (11693 - St Stephens Gardens, First Stop on LOR: 11693 - St Stephens Gardens).

AVAILABILITY: At any time.  
OPERATING RESTRICTIONS: Unscheduled curtailments only.  
MEAL RELIEFS: No meal relief vehicles to stand at any time.  
FERRY VEHICLES: No ferry vehicles to park on stand at any time.  
BLIND DISPLAY: Chepstow Road.

### **PADDINGTON, EASTBOURNE TERRACE (from RUSSELL SQUARE)**

Public stand for nine buses on east side of Eastbourne Terrace, commencing 121 metres south of the junction with Bishops Bridge Road and extending 108 metres north.

Buses proceed from Eastbourne Terrace via Cleveland Terrace, Westbourne Terrace, Bishop's Bridge Road and Eastbourne Terrace to stand, departing to Eastbourne Terrace. Set down in Eastbourne Terrace, at Stop D (29396 - Paddington Station<># / Eastbourne Terrace and pick up in Eastbourne Terrace, at Stop E (29397 - Paddington Stn<># / Eastbourne Terrace, First Stop on LOR: 14020 - Paddington Station <> #).

AVAILABILITY: At any time.  
OPERATING RESTRICTIONS: Unscheduled curtailments only.  
MEAL RELIEFS: No meal relief vehicles to stand at any time.  
FERRY VEHICLES: No ferry vehicles to park on stand at any time.  
BLIND DISPLAY: Paddington.

### **PADDINGTON STATION (from East Acton, Telford Way)**

Buses proceed from Eastbourne Terrace via Praed Street, London Street and Sussex Gardens departing to Norfolk Place. Set down in Eastbourne Terrace, at Stop E (29397 - Paddington Stn<># / Eastbourne Terrace and pick up in Norfolk Place, G (33284 - St Mary's Hospital, First Stop on LOR: 33284 - St Mary's Hospital).

AVAILABILITY: At any time.  
OPERATING RESTRICTIONS: **Turning Point Only - Buses must not stand**  
BLIND DISPLAY: Paddington.

## **EDGWARE ROAD STATION (from East Acton, Telford Way)**

Buses proceed from Praed Street via Chapel Street and Old Marylebone Road departing to Sussex Gardens. Set down in Praed Street, at Stop P (11663 - St Mary's Hospital, Last Stop on LOR: 11663 - St Mary's Hospital) and pick up in Sussex Gardens, at Stop ES (33283 - Sussex Gardens, First Stop on LOR: 33283 - Sussex Gardens).

AVAILABILITY: At any time.  
OPERATING RESTRICTIONS: **Turning Point Only - Buses must not stand**  
BLIND DISPLAY: Edgware Road Station.

## **MARBLE ARCH, TYBURN WAY**

Public stand for three buses on west side of Tyburn Way, commencing 1 metre south of lamp standard No 20512 and extending 33 metres south.

### From East Acton, Telford Way.

Buses proceed from Edgware Road via Marble Arch, Park Lane, Cumberland Gate and Tyburn Way to stand, departing via Tyburn Way, Marble Arch, Park Lane, Cumberland Gate and Marble Arch to Edgware Road. Set down in Edgware Road, at Stop H (621 - Marble Arch / Edgware Road, Last Stop on LOR: 621 - Marble Arch / Edgware Road) and pick up in Edgware Road, at Stop E (14 - Marble Arch / Edgware Road, First Stop on LOR: 14 - Marble Arch / Edgware Road).

### From Russell Square.

Buses proceed from Oxford Street via Park Lane, Cumberland Gate and Tyburn Way to stand, departing via Tyburn Way and Marble Arch to Oxford Street. Set down in Oxford Street, at Stop O (179 - Marble Arch Station <>, Last Stop on LOR: 179 - Marble Arch Station <>) and pick up in Oxford Street, at Stop K (177 - Marble Arch Station <>, First Stop on LOR: 177 - Marble Arch Station <>).

AVAILABILITY: At any time.  
OPERATING RESTRICTIONS: Unscheduled curtailments only.  
MEAL RELIEFS: No meal relief vehicles to stand at any time.  
FERRY VEHICLES: No ferry vehicles to park on stand at any time.  
BLIND DISPLAY: Marble Arch.

## **OXFORD CIRCUS, JOHN PRINCES STREET (SOUTH EAST) (from East Acton, Telford Way)**

Public stand for two buses on east side of John Prince's Street, commencing at the party wall of Nos 2/3 and extending 28 metres north.

Buses proceed from Oxford Street via Regent Street, Margaret Street and John Prince's Street to stand, departing via John Prince's Street to Oxford Street. Set down in Oxford Street, at Stop OF (34554 - Oxford Circus, Last Stop on LOR: 34554 - Oxford Circus) and pick up in Oxford Street, at Stop OQ (33926 - Oxford Circus Station <> / Harewood Place, First Stop on LOR: 33926 - Oxford Circus Station <> / Harewood Place).

AVAILABILITY: At any time.  
OPERATING RESTRICTIONS: Unscheduled curtailments only.  
MEAL RELIEFS: No meal relief vehicles to stand at any time.  
FERRY VEHICLES: No ferry vehicles to park on stand at any time.  
BLIND DISPLAY: Oxford Circus.

## **RUSSELL SQUARE, NORTH SIDE**

Public stand for four buses on north side of Russell Square, commencing 25 metres west of Bedford Way and extending 55 metres westwards.

Buses proceed from Russell Square direct to stand, departing to Russell Square. Set down in Russell Square, at Stop E (33925 - Russell Square Station <>) and pick up in Russell Square, at Stop E (33925 - Russell Square Station <>).

AVAILABILITY: At any time.  
OPERATING RESTRICTIONS: No more than 2 buses on Route 7 should be scheduled to stand at any one time.  
MEAL RELIEFS: No meal relief vehicles to stand at any time.  
FERRY VEHICLES: No ferry vehicles to park on stand at any time.  
BLIND DISPLAY: Russell Square.  
OTHER INFORMATION: Toilet facilities available 0900-2030 Mondays to Fridays.

# LONDON BUSES - ROUTE DESCRIPTION

## ROUTE N7: Northolt Station - Russell Square

**Date of Structural Change:** 21 June 2014.

**Date of Service Change:** 21 June 2014.

**Reason for Issue:** New Tender.

### STREETS TRAVERSED

**Towards Russell Square:** Mandeville Road, Church Road, Target Roundabout, Church Road, White Hart Roundabout, Ruislip Road, The Broadway, Ruislip Road East, Argyle Road, Scotch Common, Pitshanger Lane, Woodfield Road, Eaton Rise, Castlebar Road, Haven Green (North Side), Haven Green (East Side), The Broadway, The Mall, Uxbridge Road, Acton High Street, The Vale, East Acton Lane, Old Oak Common Lane, Du Cane Road, Wood Lane, North Pole Road, St Quintin Gardens, Barlby Road, St Mark's Road, Cambridge Gardens, Ladbrooke Grove, Westbourne Park Road, Chepstow Road, Westbourne Grove, Bishop's Bridge Road, Eastbourne Terrace, Praed Street, Edgware Road, Marble Arch, Oxford Street, Tottenham Court Road, Great Russell Street, Montague Street, Russell Square.

**Towards Northolt Station:** Russell Square, Bedford Place, Great Russell Street, Bloomsbury Street, New Oxford Street, Oxford Street, Park Lane, Cumberland Gate, Marble Arch, Edgware Road, Sussex Gardens, Norfolk Place, Praed Street, Eastbourne Terrace, Bishop's Bridge Road, Westbourne Grove, Chepstow Road, Westbourne Park Road, Ladbrooke Grove, Cambridge Gardens, St Mark's Road, Barlby Road, Highlever Road, St Quintin Gardens, North Pole Road, Wood Lane, Du Cane Road, Old Oak Common Lane, Old Oak Road, East Acton Lane, The Vale, Acton High Street, Uxbridge Road, The Mall, The Broadway, Spring Bridge Road, Haven Green (West Side), Haven Green (North Side), Haven Green (East Side), Haven Green (Diagonal), Castlebar Road, Eaton Rise, Woodfield Road, Pitshanger Lane, Scotch Common, Argyle Road, Ruislip Road East, The Broadway, Ruislip Road, White Hart Roundabout, Church Road, Target Roundabout, Church Road, Mandeville Road.

## **AUTHORISED STANDS, CURTAILMENT POINTS, & BLIND DESCRIPTIONS**

Please note that only stands, curtailment points, & blind descriptions as detailed in this contractual document may be used.

### **NORTHOLT STATION**

Public stand for six buses in bus parking area on west side of Mandeville Road between Carr Road and Castle Road.

Buses proceed from Mandeville Road via Bus Lay-By to stand, departing via Bus Lay-By to Mandeville Road. Set down in Mandeville Road, at Stop A (14908 - Northolt Station <>, Last Stop on LOR: 14908 - Northolt Station <>) and pick up in Mandeville Road, at Stop B (18221 - Northolt Station <>, First Stop on LOR: 16142 - Moat Farm Road).

AVAILABILITY:	At any time.
OPERATING RESTRICTIONS:	No more than 2 buses on Route N7 should be scheduled to stand at any one time.
MEAL RELIEFS:	No meal relief vehicles to stand at any time.
FERRY VEHICLES:	No ferry vehicles to park on stand at any time.
BLIND DISPLAY:	Northolt.
OTHER INFORMATION:	Toilet facilities available 24 hours.

### **GREENFORD, RED LION (from RUSSELL SQUARE)**

Public stand for 5 buses in two sections (11 metres and 49 metres) on east side of Windmill Lane commencing 4 metres south of lamp standard No. D.C 678 and extending overall 66 metres south. Overflow stand for 3 buses in three sections (13 metres, 14 metres and 9 metres) on south side of Otter Road. First two sections commencing 1 metre west of No Entry signpost S4 and extending overall 34.5 metres east; third section commencing level with No Entry signpost S3 and extending 9 metres east.

Buses proceed from Ruislip Road East via Greenford Road, Otter Road and Windmill Lane to stand, departing via Windmill Lane and The Broadway to Ruislip Road East. Set down in Ruislip Road East, at Stop M (BP095 - Clifton Road, Last Stop on LOR: BP095 - Clifton Road) and pick up in Ruislip Road East, at Stop L (33862 - Clifton Road, First Stop on LOR: 33862 - Clifton Road).

AVAILABILITY:	At any time.
OPERATING RESTRICTIONS:	Unscheduled curtailments only.
MEAL RELIEFS:	No meal relief vehicles to stand at any time.
FERRY VEHICLES:	No ferry vehicles to park on stand at any time.
BLIND DISPLAY:	Greenford Broadway.

### **EALING BROADWAY, HAVEN GREEN, STAND Z3/Z4 (from RUSSELL SQUARE)**

Public stand for 5 buses at Stops Z3 and Z4 on south side of Haven Green (diagonal) commencing 11 metres west of lamp standard No. 37S8 and extending 49 metres east. Buses proceed from Haven Green (Diagonal) direct to stand, departing via Haven Green (Diagonal) and Haven Green (North Side) to Haven Green (East Side). Set down in Haven Green (diagonal), at Stop E (CW25 - Haven Green / Ealing Broadway Stn <> #, Last Stop on LOR: CW25 - Haven Green / Ealing Broadway Stn <> #) and pick up in Haven Green (east Side), at Stop A (BP1008 - Ealing Broadway Station <> # / Haven Green, First Stop on LOR: BP1008 - Ealing Broadway Station <> # / Haven Green).

AVAILABILITY: At any time.  
OPERATING RESTRICTIONS: Unscheduled curtailments only  
MEAL RELIEFS: No meal relief vehicles to stand at any time.  
FERRY VEHICLES: No ferry vehicles to park on stand at any time.  
BLIND DISPLAY: Ealing Broadway.

### **ACTON, HORN LANE, EAST SIDE (from RUSSELL SQUARE)**

Public stand for three buses on the offside of Horn Lane, east side, commencing in line with the entrance to Oakham House, and extending 35 metres south. Additional overflow stand for one bus available on west side of Horn Lane forward of bus stop R0461.

Buses proceed from Acton High Street via Market Place and Horn Lane to stand, departing via Horn Lane and Steyne Road to Acton High Street. Set down in Acton High Street, at Stop E (17303 - Acton Market Place, Last Stop on LOR: 17303 - Acton Market Place) and pick up in Acton High Street, at Stop D (R0742 - King Street, First Stop on LOR: R0742 - King Street).

AVAILABILITY: At any time.  
OPERATING RESTRICTIONS: Unscheduled curtailments only.  
MEAL RELIEFS: No meal relief vehicles to stand at any time.  
FERRY VEHICLES: No ferry vehicles to park on stand at any time.  
BLIND DISPLAY: Acton, High Street.

### **EAST ACTON, TELFORD WAY (from RUSSELL SQUARE)**

Public stand for three buses on the east side of Telford Way, at the eastern junction with Brunel Road, extending 30 metres north.

When full buses must use the Brunel Road stand.

Buses proceed from Du Cane Road via Old Oak Common Lane, Brunel Road and Telford Way to stand, departing via Telford Way, Brunel Road and Old Oak Common Lane to Du Cane Road. Set down in Du Cane Road, at Stop H (11577 - East Acton Station <>), Last Stop on LOR: 11577 - East Acton Station <>) and pick up in Du Cane Road, at Stop C (11576 - East Acton Station<> / Fitzneal Street, First Stop on LOR: 11576 - East Acton Station<> / Fitzneal Street).

AVAILABILITY: At any time.  
OPERATING RESTRICTIONS: Unscheduled curtailments only  
MEAL RELIEFS: No meal relief vehicles to stand at any time.  
FERRY VEHICLES: No ferry vehicles to park on stand at any time.  
BLIND DISPLAY: East Acton.

### **EAST ACTON, DU CANE ROAD (from RUSSELL SQUARE)**

Buses proceed from Du Cane Road via Fitzneal Street, Foliot Street and Old Oak Common Lane departing to Du Cane Road. Set down in Du Cane Road, at Stop G (11573 - Wulfstan Street, Last Stop on LOR: 11573 - Wulfstan Street) and pick up in Du Cane Road, at Stop C (11576 - East Acton Station<> / Fitzneal Street, First Stop on LOR: 11576 - East Acton Station<> / Fitzneal Street).

AVAILABILITY: At any time.  
OPERATING RESTRICTIONS: **Turning Point Only - Buses must not stand**  
BLIND DISPLAY: East Acton.

### **BARLBY ROAD, ST. QUINTIN GARDENS (from RUSSELL SQUARE)**

Buses proceed from Barlby Road via Highlever Road and St Quintin Gardens departing to Barlby Road. Set down in Barlby Road, L (BP2865 - Highlever Road, Last Stop on LOR: BP2865 - Highlever Road) and pick up in Barlby Road, U (36798 - Highlever Road, First Stop on LOR: 36798 - Highlever Road).

AVAILABILITY: At any time.  
OPERATING RESTRICTIONS: **Turning Point Only - Buses must not stand**  
BLIND DISPLAY: North Pole Road.



### **ST. MARK'S ROAD, ST. QUINTIN GARDENS (from RUSSELL SQUARE)**

Buses proceed from St Mark's Road departing to St Mark's Road. Set down in St Mark's Road, F (11552 - Oxford Gardens, Last Stop on LOR: 11552 - Oxford Gardens) and pick up in St Mark's Road, C (11551 - Oxford Gardens, First Stop on LOR: 11551 - Oxford Gardens).

AVAILABILITY: At any time.  
OPERATING RESTRICTIONS: **Turning Point Only - Buses must not stand**  
BLIND DISPLAY: Ladbroke Grove.

### **WESTBOURNE PARK ROAD, GREAT WESTERN ROAD (from RUSSELL SQUARE)**

Public stand for one bus at rear of bus stop bay (stop letter N) on north side of Westbourne Park Road, commencing 11 metres east of a point opposite the eastern kerblineline of Shrewsbury Road.

Buses proceed from Chepstow Road via Talbot Road, Shrewsbury Road and Westbourne Park Road to stand, departing to Westbourne Park Road. Set down in Chepstow Road, at Stop PC (1263 - Artesian Road, Last Stop on LOR: 1263 - Artesian Road) and pick up in Westbourne Park Road, at Stop N (11696 - Shrewsbury Road / Brunel Estate, First Stop on LOR: 11696 - Shrewsbury Road / Brunel Estate).

AVAILABILITY: At any time.  
OPERATING RESTRICTIONS: Unscheduled curtailments only.  
MEAL RELIEFS: No meal relief vehicles to stand at any time.  
FERRY VEHICLES: No ferry vehicles to park on stand at any time.  
BLIND DISPLAY: Chepstow Road.

### **PADDINGTON, EASTBOURNE TERRACE (from RUSSELL SQUARE)**

Public stand for nine buses on east side of Eastbourne Terrace, commencing 121 metres south of the junction with Bishops Bridge Road and extending 108 metres north.

Buses proceed from Eastbourne Terrace via Cleveland Terrace, Westbourne Terrace, Bishop's Bridge Road and Eastbourne Terrace to stand, departing to Eastbourne Terrace. Set down in Eastbourne Terrace, at Stop D (29396 - Paddington Station<># / Eastbourne Terrace, Last Stop on LOR: BP5544 - Westbourne Terrace / Chilworth Street) and pick up in Eastbourne Terrace, at Stop E (29397 - Paddington Stn<># / Eastbourne Terrace, First Stop on LOR: BP5666 - Westbourne Terrace / Chilworth Street).

AVAILABILITY: At any time.  
OPERATING RESTRICTIONS: Unscheduled curtailments only.  
MEAL RELIEFS: No meal relief vehicles to stand at any time.  
FERRY VEHICLES: No ferry vehicles to park on stand at any time.  
BLIND DISPLAY: Paddington.  
OTHER INFORMATION: There is no cage surrounding stand.

### **PADDINGTON STATION (from Northolt Station)**

Buses proceed from Eastbourne Terrace via Praed Street, London Street and Sussex Gardens departing to Norfolk Place. Set down in Eastbourne Terrace, at Stop E (29397 - Paddington Stn<># / Eastbourne Terrace, Last Stop on LOR: 35232 - Westbourne Terrace) and pick up in Norfolk Place, G (33284 - St Mary's Hospital, First Stop on LOR: 33284 - St Mary's Hospital).

AVAILABILITY: At any time.  
OPERATING RESTRICTIONS: **Turning Point Only - Buses must not stand**  
BLIND DISPLAY: Paddington.

### **EDGWARE ROAD STATION (from Northolt Station)**

Buses proceed from Praed Street via Chapel Street and Old Marylebone Road departing to Sussex Gardens. Set down in Praed Street, at Stop P (11663 - St Mary's Hospital, Last Stop on LOR: 11663 - St Mary's Hospital) and pick up in Sussex Gardens, at Stop ES (33283 - Sussex Gardens, First Stop on LOR: 33283 - Sussex Gardens).

AVAILABILITY: At any time.  
OPERATING RESTRICTIONS: **Turning Point Only - Buses must not stand**  
BLIND DISPLAY: Edgware Road Station.

### **MARBLE ARCH, TYBURN WAY**

Public stand for three buses on west side of Tyburn Way, commencing 1 metre south of lamp standard No 20512 and extending 33 metres south.

#### From Northolt Station.

Buses proceed from Edgware Road via Marble Arch, Park Lane, Cumberland Gate and Tyburn Way to stand, departing via Tyburn Way, Marble Arch, Park Lane, Cumberland Gate and Marble Arch to Edgware Road. Set down in Edgware Road, at Stop H (621 - Marble Arch / Edgware Road, Last Stop on LOR: 11663 - St Mary's Hospital) and pick up in Edgware Road, at Stop E (14 - Marble Arch / Edgware Road, First Stop on LOR: 14 - Marble Arch / Edgware Road).

#### From Russell Square.

Buses proceed from Oxford Street via Park Lane, Cumberland Gate and Tyburn Way to stand, departing via Tyburn Way and Marble Arch to Oxford Street. Set down in Oxford Street, at Stop O (179 - Marble Arch Station <>, Last Stop on LOR: 179 - Marble Arch Station <>) and pick up in Oxford Street, at Stop K (177 - Marble Arch Station <>, First Stop on LOR: 15783 - Great Titchfield Street).

AVAILABILITY: At any time.  
OPERATING RESTRICTIONS: Unscheduled curtailments only.  
MEAL RELIEFS: No meal relief vehicles to stand at any time.  
FERRY VEHICLES: No ferry vehicles to park on stand at any time.  
BLIND DISPLAY: Marble Arch.

## **OXFORD CIRCUS, JOHN PRINCES STREET (SOUTH EAST) (from Northolt Station)**

Public stand for two buses on east side of John Prince's Street, commencing at the party wall of Nos 2/3 and extending 28 metres north.

Buses proceed from Oxford Street via Regent Street, Margaret Street and John Prince's Street to stand, departing via John Prince's Street to Oxford Street. Set down in Oxford Street, at Stop OF (34554 - Oxford Circus, Last Stop on LOR: 11663 - St Mary's Hospital) and pick up in Oxford Street, at Stop OQ (33926 - Oxford Circus Station <> / Harewood Place, First Stop on LOR: 33926 - Oxford Circus Station <> / Harewood Place).

AVAILABILITY: At any time.  
OPERATING RESTRICTIONS: Unscheduled curtailments only.  
MEAL RELIEFS: No meal relief vehicles to stand at any time.  
FERRY VEHICLES: No ferry vehicles to park on stand at any time.  
BLIND DISPLAY: Oxford Circus.

## **RUSSELL SQUARE, NORTH SIDE**

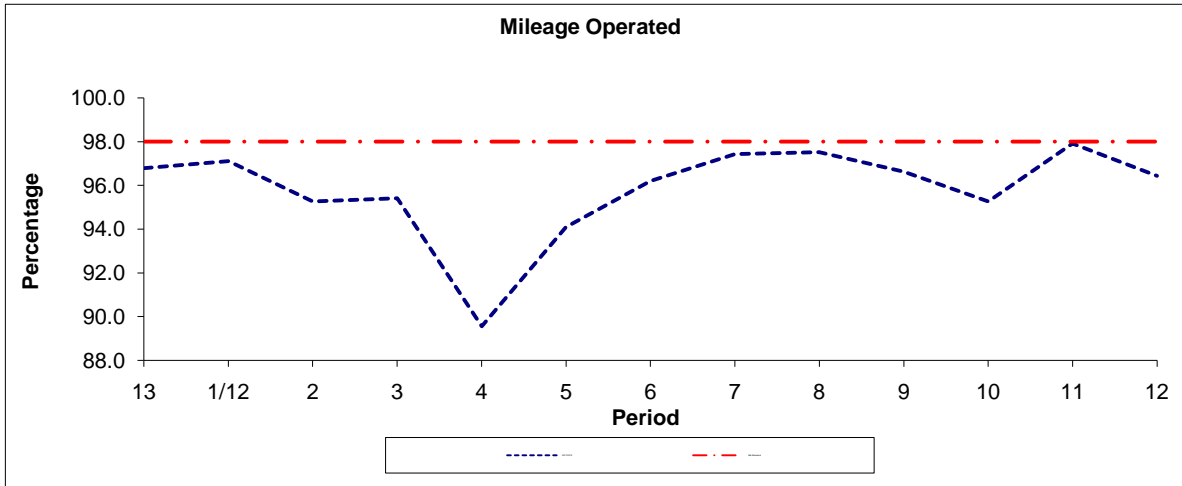
Public stand for four buses on north side of Russell Square, commencing 25 metres west of Bedford Way and extending 55 metres westwards.

Buses proceed from Russell Square (West And North Sides) direct to stand, departing to Russell Square (North And East And South Sides). Set down in Russell Square, at Stop E (33925 - Russell Square Station <>, Last Stop on LOR: 33925 - Russell Square Station <>) and pick up in Russell Square, at Stop E (33925 - Russell Square Station <>, First Stop on LOR: 33925 - Russell Square Station <>).

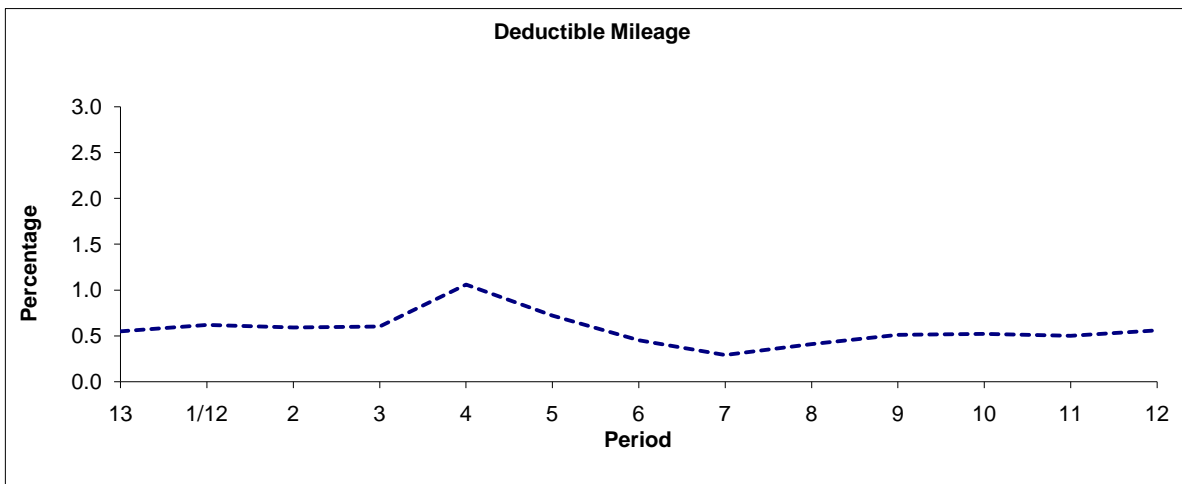
AVAILABILITY: At any time.  
OPERATING RESTRICTIONS: No more than 2 buses on Route N7 should be scheduled to stand at any one time.  
MEAL RELIEFS: No meal relief vehicles to stand at any time.  
FERRY VEHICLES: No ferry vehicles to park on stand at any time.  
BLIND DISPLAY: Russell Square.

**PART B - PERFORMANCE STATISTICS**

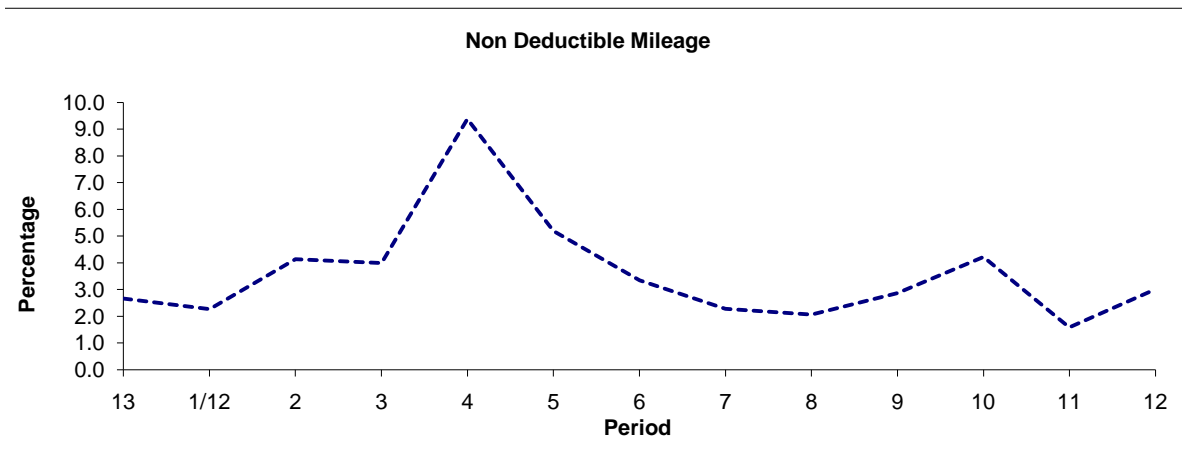
**Route 7**



Period	13	1/12	2	3	4	5	6	7	8	9	10	11	12
2011/2012	96.78	97.11	95.27	95.41	89.56	94.09	96.20	97.43	97.52	96.62	95.26	97.91	96.43
Min Standard	98.00	98.00	98.00	98.00	98.00	98.00	98.00	98.00	98.00	98.00	98.00	98.00	98.00



Period	13	1/12	2	3	4	5	6	7	8	9	10	11	12
2011/2012	0.55	0.62	0.59	0.60	1.06	0.72	0.45	0.29	0.41	0.51	0.52	0.50	0.56

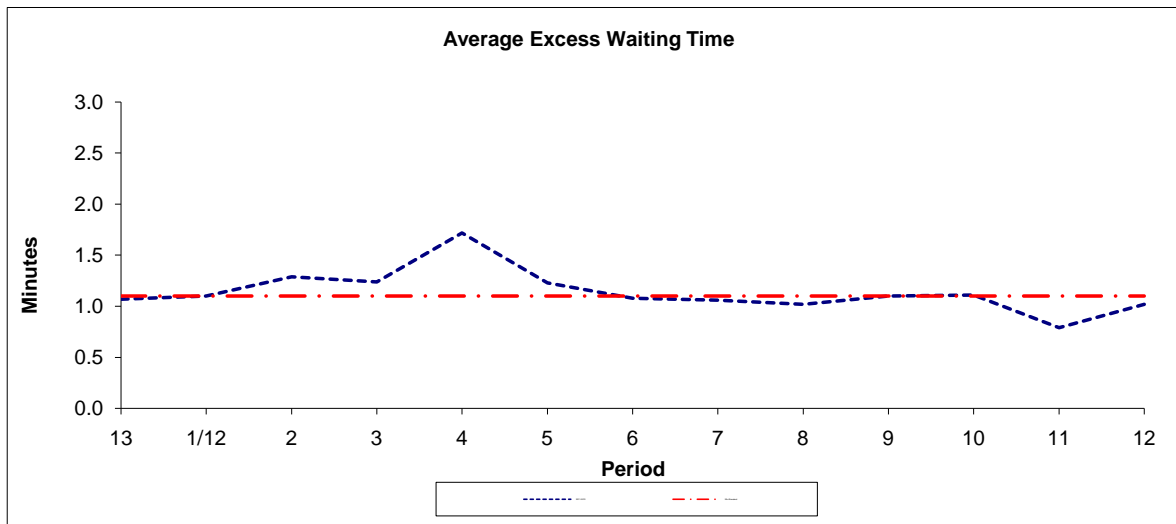


Period	13	1/12	2	3	4	5	6	7	8	9	10	11	12
2011/2012	2.67	2.27	4.14	3.99	9.38	5.19	3.35	2.28	2.07	2.87	4.22	1.59	3.01

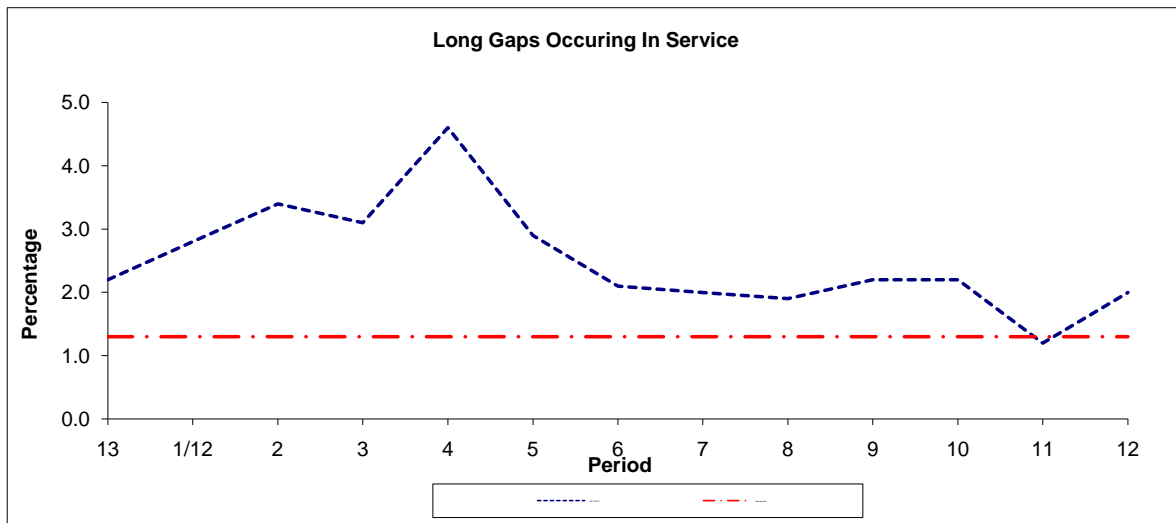
**Note :** Mileage is based on 4 weeks data

**PART B - PERFORMANCE STATISTICS**

**Route 7**



Period	13	1/12	2	3	4	5	6	7	8	9	10	11	12
2011-2012	1.07	1.10	1.29	1.24	1.72	1.23	1.08	1.06	1.02	1.10	1.11	0.79	1.02
Min Standard	1.10	1.10	1.10	1.10	1.10	1.10	1.10	1.10	1.10	1.10	1.10	1.10	1.10

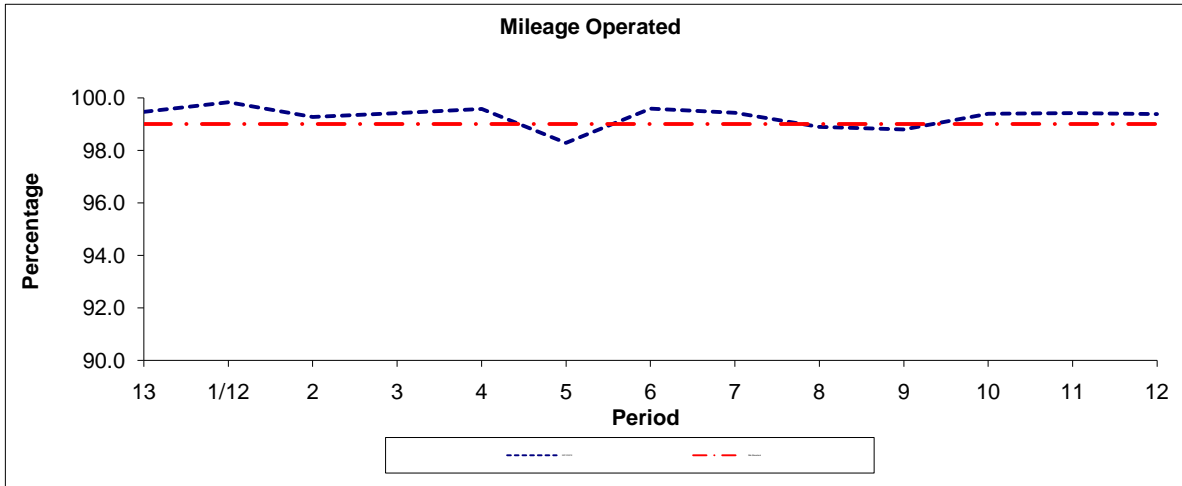


Period	13	1/12	2	3	4	5	6	7	8	9	10	11	12
2011-2012	2.20	2.80	3.40	3.10	4.60	2.90	2.10	2.00	1.90	2.20	2.20	1.20	2.00
Benchmark	1.30	1.30	1.30	1.30	1.30	1.30	1.30	1.30	1.30	1.30	1.30	1.30	1.30

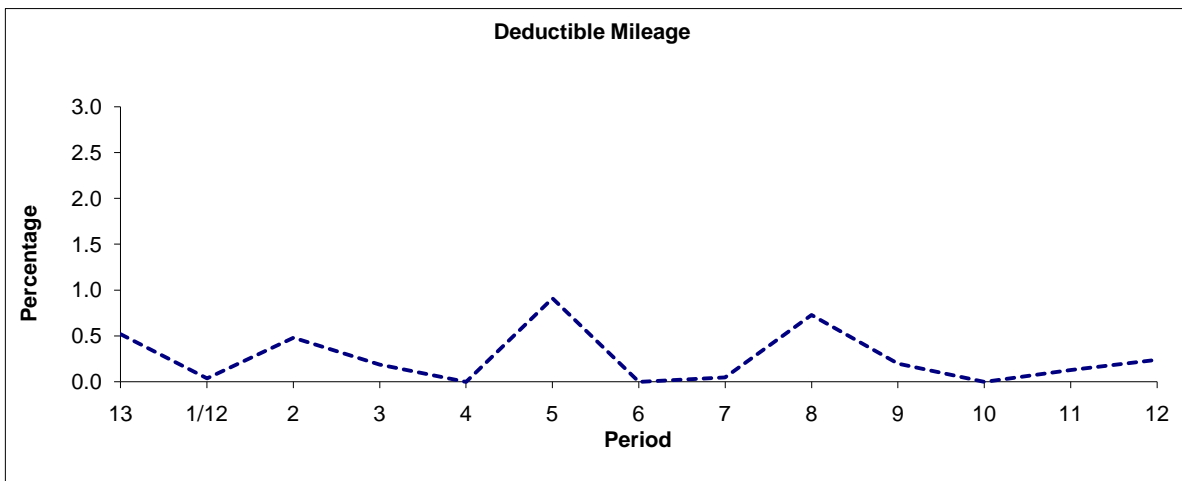
**Note :** Reliability is actual performance under full iBus (4 weeks data).  
 Minimum Standards and Benchmarks are those applicable under the new contract.

**PART B - PERFORMANCE STATISTICS**

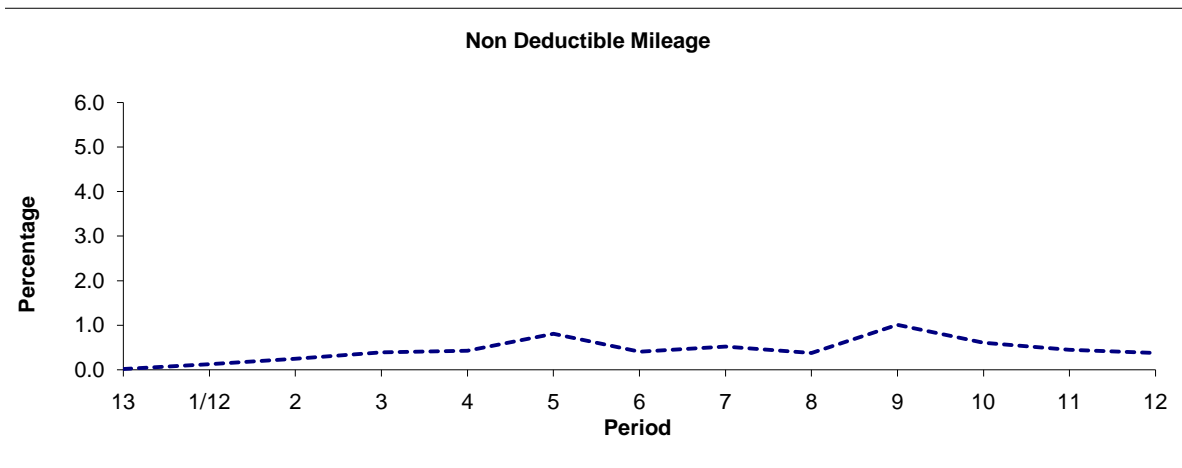
**Route N7**



Period	13	1/12	2	3	4	5	6	7	8	9	10	11	12
2011/2012	99.46	99.83	99.27	99.42	99.57	98.28	99.59	99.43	98.89	98.79	99.39	99.42	99.38
Min Standard	99.00	99.00	99.00	99.00	99.00	99.00	99.00	99.00	99.00	99.00	99.00	99.00	99.00



Period	13	1/12	2	3	4	5	6	7	8	9	10	11	12
2011/2012	0.52	0.04	0.48	0.19	0.00	0.91	0.00	0.05	0.73	0.20	0.00	0.13	0.24

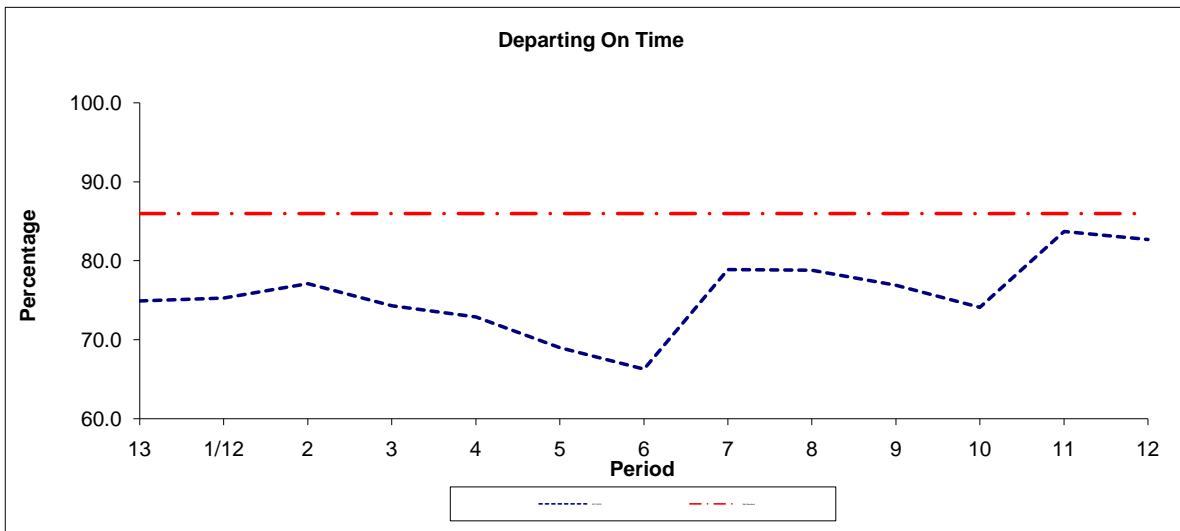


Period	13	1/12	2	3	4	5	6	7	8	9	10	11	12
2011/2012	0.02	0.13	0.25	0.39	0.43	0.81	0.41	0.52	0.38	1.01	0.61	0.45	0.38

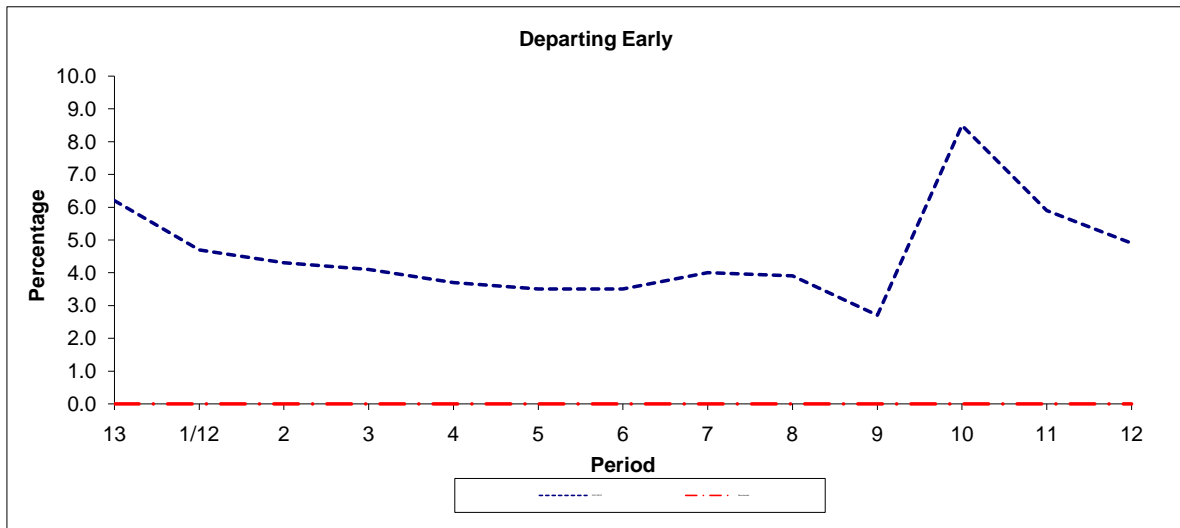
**Note :** Mileage is based on 4 weeks data

**PART B - PERFORMANCE STATISTICS**

**Route N7**



Period	13	1/12	2	3	4	5	6	7	8	9	10	11	12
2011/2012	74.9	75.3	77.1	74.3	72.9	69.0	66.3	78.9	78.8	76.9	74.1	83.7	82.7
Min Standard	86.0	86.0	86.0	86.0	86.0	86.0	86.0	86.0	86.0	86.0	86.0	86.0	86.0



Period	13	1/12	2	3	4	5	6	7	8	9	10	11	12
2011/2012	6.2	4.7	4.3	4.1	3.7	3.5	3.5	4.0	3.9	2.7	8.5	5.9	4.9
Benchmark	0.0	0.0	0.0	0.0	0.0	0.0	0.0	0.0	0.0	0.0	0.0	0.0	0.0

**Note :** Reliability is actual performance under full iBus (4 weeks data).  
 Minimum Standards and Benchmarks are those applicable under the new contract.

**ROUTE 7 - FULL iBUS RESULTS BY TIME OF DAY**  
**QUARTER 4 2011/12 TO QUARTER 3 2012/13 (07/01/12 - 04/01/13)**

**MONDAY - FRIDAY**

Time Period	Expected Buses	On AVL (%)	Scheduled Waiting Time (SWT) (mins)	Excess Waiting Time (EWT) (mins)	Actual Waiting Time (AWT) (mins)	Probability of Waiting < 10 mins (%)	Probability of Waiting 10-20 mins (%)	Probability of Waiting 20-30 mins (%)	Probability of Waiting > 30 mins (%)	Long Gaps (%)	Maximum Gap (mins)
0500 - 0700	27,357.	95.9	4.88	<b>0.45</b>	5.34	90.5	9.2	0.2	0.0	0.4	66
0700 - 1000	102,637.	97.3	3.45	<b>0.97</b>	4.42	92.5	7.1	0.4	0.1	2.2	59
1000 - 1300	94,510.	95.5	3.74	<b>1.21</b>	4.96	89.0	10.0	0.8	0.2	3.0	70
1300 - 1600	90,891.	97.4	3.79	<b>1.19</b>	4.98	89.0	10.1	0.8	0.2	2.8	79
1600 - 1900	91,585.	92.2	3.75	<b>1.65</b>	5.40	85.3	13.1	1.3	0.3	4.6	49
1900 - 2200	72,816.	97.7	4.76	<b>1.22</b>	5.98	81.7	16.8	1.3	0.2	2.4	58
2200 - 2400	37,757.	101.0	5.94	<b>0.69</b>	6.63	78.2	20.7	1.0	0.1	0.4	53
<b>Summary</b>	<b>517,553.</b>	<b>96.3</b>	<b>3.94</b>	<b>1.22</b>	<b>5.16</b>	<b>87.6</b>	<b>11.4</b>	<b>0.9</b>	<b>0.2</b>	<b>2.9</b>	<b>79</b>

**SATURDAY**

Time Period	Expected Buses	On AVL (%)	Scheduled Waiting Time (SWT) (mins)	Excess Waiting Time (EWT) (mins)	Actual Waiting Time (AWT) (mins)	Probability of Waiting < 10 mins (%)	Probability of Waiting 10-20 mins (%)	Probability of Waiting 20-30 mins (%)	Probability of Waiting > 30 mins (%)	Long Gaps (%)	Maximum Gap (mins)
0500 - 0700	3,680.	98.6	7.50	<b>0.38</b>	7.88	71.7	27.0	1.3	0.1	1.0	37
0700 - 1000	12,745.	97.4	6.03	<b>0.57</b>	6.60	78.9	20.3	0.7	0.0	0.2	56
1000 - 1300	20,251.	98.6	3.68	<b>0.88</b>	4.57	92.1	7.4	0.4	0.1	1.7	47
1300 - 1600	19,352.	97.3	3.77	<b>0.95</b>	4.72	91.2	8.1	0.5	0.2	2.0	43
1600 - 1900	19,455.	95.2	3.77	<b>1.30</b>	5.07	88.3	10.6	1.0	0.1	3.3	43
1900 - 2200	13,443.	97.1	5.47	<b>1.24</b>	6.71	76.5	20.8	2.2	0.5	2.1	67
2200 - 2400	8,028.	95.5	5.90	<b>1.44</b>	7.33	72.8	23.9	2.7	0.6	1.6	67
<b>Summary</b>	<b>96,954.</b>	<b>97.0</b>	<b>4.43</b>	<b>1.00</b>	<b>5.43</b>	<b>86.2</b>	<b>12.7</b>	<b>0.9</b>	<b>0.2</b>	<b>1.9</b>	<b>67</b>

**SUNDAY AND BANK HOLIDAYS**

Time Period	Expected Buses	On AVL (%)	Scheduled Waiting Time (SWT) (mins)	Excess Waiting Time (EWT) (mins)	Actual Waiting Time (AWT) (mins)	Probability of Waiting < 10 mins (%)	Probability of Waiting 10-20 mins (%)	Probability of Waiting 20-30 mins (%)	Probability of Waiting > 30 mins (%)	Long Gaps (%)	Maximum Gap (mins)
0500 - 0700	3,807.	98.5	7.50	<b>0.39</b>	7.89	72.2	26.1	1.4	0.2	1.2	40
0700 - 1000	10,991.	97.6	7.21	<b>0.50</b>	7.72	68.4	30.5	1.0	0.0	0.1	46
1000 - 1300	13,426.	100.3	5.93	<b>0.55</b>	6.48	78.9	20.3	0.7	0.0	0.2	43
1300 - 1600	13,375.	97.3	5.89	<b>0.94</b>	6.84	75.8	22.3	1.6	0.3	0.8	60
1600 - 1900	13,488.	97.2	5.87	<b>1.18</b>	7.05	74.5	23.0	2.2	0.3	1.0	58
1900 - 2200	13,298.	96.8	5.84	<b>1.15</b>	6.99	74.9	22.9	2.1	0.1	1.0	59
2200 - 2400	8,141.	101.0	6.00	<b>0.68</b>	6.67	78.0	20.9	1.1	0.1	0.4	44
<b>Summary</b>	<b>76,526.</b>	<b>98.2</b>	<b>6.05</b>	<b>0.88</b>	<b>6.93</b>	<b>75.4</b>	<b>22.9</b>	<b>1.5</b>	<b>0.2</b>	<b>0.7</b>	<b>60</b>

**ALL DAYS**

Time Period	Expected Buses	On AVL (%)	Scheduled Waiting Time (SWT) (mins)	Excess Waiting Time (EWT) (mins)	Actual Waiting Time (AWT) (mins)	Probability of Waiting < 10 mins (%)	Probability of Waiting 10-20 mins (%)	Probability of Waiting 20-30 mins (%)	Probability of Waiting > 30 mins (%)	Long Gaps (%)	Maximum Gap (mins)
0500 - 0700	34,844.	96.4	5.32	<b>0.44</b>	5.77	87.4	12.2	0.4	0.1	0.5	66
0700 - 1000	126,373.	97.3	3.85	<b>0.91</b>	4.77	90.1	9.3	0.4	0.1	1.9	59
1000 - 1300	128,187.	96.5	3.97	<b>1.08</b>	5.06	88.4	10.7	0.7	0.2	2.5	70
1300 - 1600	123,618.	97.4	4.00	<b>1.13</b>	5.13	88.0	11.0	0.8	0.2	2.5	79
1600 - 1900	124,528.	93.2	3.95	<b>1.57</b>	5.52	84.6	13.8	1.3	0.2	4.1	58
1900 - 2200	99,557.	97.5	4.97	<b>1.22</b>	6.18	80.3	18.0	1.5	0.2	2.2	67
2200 - 2400	53,926.	100.2	5.94	<b>0.79</b>	6.73	77.5	21.2	1.3	0.1	0.6	67
<b>Summary</b>	<b>691,033.</b>	<b>96.6</b>	<b>4.20</b>	<b>1.16</b>	<b>5.36</b>	<b>86.3</b>	<b>12.6</b>	<b>0.9</b>	<b>0.2</b>	<b>2.6</b>	<b>79</b>



**ROUTE N7 - FULL iBUS RESULTS BY TIME OF DAY**  
**QUARTER 4 2011/12 TO QUARTER 3 2012/13 (07/01/12 - 04/01/13)**

**MONDAY - FRIDAY**

Time Period	Expected Buses	On AVL (%)	Linked (%)	Departing On Time (%)	Non Arrival / Not Linked (%)	Departing 8 - 2.5 mins Early (%)	Departing 5 - 15 mins Late (%)
0000 - 0500	62,490.	99.4	98.3	79.5	1.9	5.9	12.7
<b>Summary</b>	<b>62,490.</b>	<b>99.4</b>	<b>98.3</b>	<b>79.5</b>	<b>1.9</b>	<b>5.9</b>	<b>12.7</b>

**SATURDAY**

Time Period	Expected Buses	On AVL (%)	Linked (%)	Departing On Time (%)	Non Arrival / Not Linked (%)	Departing 8 - 2.5 mins Early (%)	Departing 5 - 15 mins Late (%)
0000 - 0500	12,671.	97.5	95.5	72.6	3.7	5.2	18.4
<b>Summary</b>	<b>12,671.</b>	<b>97.5</b>	<b>95.5</b>	<b>72.6</b>	<b>3.7</b>	<b>5.2</b>	<b>18.4</b>

**SUNDAY AND BANK HOLIDAYS**

Time Period	Expected Buses	On AVL (%)	Linked (%)	Departing On Time (%)	Non Arrival / Not Linked (%)	Departing 8 - 2.5 mins Early (%)	Departing 5 - 15 mins Late (%)
0000 - 0500	14,376.	97.8	93.6	66.4	5.4	3.7	24.4
<b>Summary</b>	<b>14,376.</b>	<b>97.8</b>	<b>93.6</b>	<b>66.4</b>	<b>5.4</b>	<b>3.7</b>	<b>24.4</b>

**ALL DAYS**

Time Period	Expected Buses	On AVL (%)	Linked (%)	Departing On Time (%)	Non Arrival / Not Linked (%)	Departing 8 - 2.5 mins Early (%)	Departing 5 - 15 mins Late (%)
0000 - 0500	89,537.	98.9	97.2	74.7	3.2	5.2	16.9
<b>Summary</b>	<b>89,537.</b>	<b>98.9</b>	<b>97.2</b>	<b>74.7</b>	<b>3.2</b>	<b>5.2</b>	<b>16.9</b>

## Transport for London - QSI Points and Mileage

Route 7  
 Service change 23041  
 Date 7 December 2009

QSI Points are highlighted in blue.

OUT DIRECTION				
Timing Point Code	Stop Number	Stop Name	Metres	Miles
EACTTW S	EACTTW S	EAST ACTON, TELFORD WAY		
<b>EACTBR</b>	<b>26194</b>	<b>Brunel Road</b>	<b>0</b>	<b>0.00</b>
	20975	The Fairway	175	0.11
	26503	East Acton Station / Erconwald Street	299	0.19
	11576	East Acton Station / Fitzneal Street	166	0.10
	11572	Wulfstan Street	405	0.25
	11568	Hammersmith Hospital	509	0.32
	11566	Latymer Upper School / Playing Fields	462	0.29
	8910	North Pole Road	193	0.12
<b>WORMPH</b>	<b>11564</b>	<b>North Pole Road / Scrubs Lane</b>	<b>145</b>	<b>0.09</b>
	36798	Highlever Road	315	0.20
	15278	Dalgarno Gardens	227	0.14
	26493	St Charles Hospital	262	0.16
	11553	St Charles Square	337	0.21
	11551	Oxford Gardens	285	0.18
	25448	Cambridge Gardens / Ladbroke Grove	286	0.18
<b>LADBSN</b>	<b>9481</b>	<b>Ladbroke Grove Station</b>	<b>196</b>	<b>0.12</b>
	11539	Portobello Road	315	0.20
	11537	Powis Gardens	277	0.17
WBPKGW	11696	Shrewsbury Road / Brunel Estate	404	0.25
	11693	St Stephens Gardens	207	0.13
<b>WBGRCR</b>	<b>1261</b>	<b>Chepstow Road</b>	<b>374</b>	<b>0.23</b>
	11671	Queensway	292	0.18
	16972	Porchester Terrace North	276	0.17
	35232	Westbourne Terrace	378	0.23
	29397	Paddington Station / Eastbourne Terrac	314	0.20
<b>PADDPR</b>	<b>14020</b>	<b>Paddington Station</b>	<b>391</b>	<b>0.24</b>
	11663	St Mary's Hospital	171	0.11
	58	Sussex Gardens	429	0.27
	1590	George Street	337	0.21
	621	Marble Arch / Edgware Road	407	0.25
<b>MARBOS</b>	<b>177</b>	<b>Marble Arch Station</b>	<b>248</b>	<b>0.15</b>
	175	Selfridges	404	0.25
<b>OXFCOS</b>	<b>34554</b>	<b>Oxford Circus</b>	<b>497</b>	<b>0.31</b>
	15783	Gt Titchfield St Photographers' Gallery	419	0.26
	830	Wardour Street	199	0.12
<b>TCTROS</b>	<b>37317</b>	<b>Tottenham Court Road Station</b>	<b>362</b>	<b>0.22</b>
	37671	British Museum	572	0.36
	BP1780	Montague Street	277	0.17
RSSQNS	33925	Russell Square Station	247	0.15
RSSQNS S	RSSQNS S	RUSSELL SQUARE, NORTH SIDE	0	0.00
<b>TOTAL ROUTE MILEAGE - OUT DIRECTION</b>			12059	7.49
			metres	miles

## TRANCHE 443

BACK DIRECTION				
Timing Point Code	Stop Number	Stop Name	Metres	Miles
RSSQNS S	RSSQNS S	RUSSELL SQUARE, NORTH SIDE		
RSSQNS	33925	Russell Square Station	0	0.00
	BP1779	Russell Square / Bedford Place	417	0.26
	37672	British Museum	256	0.16
	35030	Tottenham Court Road Station	478	0.30
TCTROS	165	Oxford Street / Soho Street	274	0.17
	976	Wardour Street	261	0.16
	33924	Gt Titchfield St Photographers' Gallery	297	0.18
OXFCOS	33926	Oxford Circus Station	331	0.21
	29104	Bond Street Station	428	0.27
MARBOS	179	Marble Arch Station	500	0.31
	14	Marble Arch / Edgware Road	609	0.38
	35420	Burwood Place	474	0.29
	33283	Sussex Gardens	326	0.20
	33284	St Mary's Hospital	294	0.18
PADDPR	11666	Paddington Station	319	0.20
	29396	Paddington Station / Eastbourne Terrac	332	0.21
	11670	Westbourne Terrace	189	0.12
	34145	Gloucester Terrace	240	0.15
	1743	Westbourne Grove / Queensway	363	0.23
WBGRCR	1263	Artesian Road	508	0.32
	11692	St Stephens Gardens	311	0.19
WBPKGW	11697	Great Western Road	258	0.16
	11538	Powis Gardens	243	0.15
	11540	Portobello Road	203	0.13
LADBSN	9482	Ladbroke Grove Station	517	0.32
	11550	Cambridge Gardens / Ladbroke Grove	161	0.10
	11552	Oxford Gardens	256	0.16
	15279	St Charles Square	326	0.20
	BP1733	Oakworth Road	135	0.08
	26492	St Charles Hospital	180	0.11
	15277	Dalgarno Gardens	278	0.17
	BP2865	Highlever Road	212	0.13
WORMPH	17368	North Pole Road	252	0.16
	8909	Caverswall Street	259	0.16
	11567	Latymer Upper School / Playing Fields	226	0.14
	11569	Hammersmith Hospital	401	0.25
	11573	Wulfstan Street	634	0.39
	11577	East Acton Station	346	0.21
	26504	The Fairway	262	0.16
	20974	Long Drive	221	0.14
	BP2420	Brunel Road	281	0.17
EACTBR	26505	Telford Way	174	0.11
EACTTW S	EACTTW S	EAST ACTON, TELFORD WAY	0	0.00
<b>TOTAL ROUTE MILEAGE - BACK DIRECTION</b>			13032 metres	8.10 miles

**Transport for London - QSI Points and Mileage**

Route N7  
 Service change 21161  
 Date 6 November 2009

QSI Points are highlighted in blue.

OUT DIRECTION					
Timing Point	Code	Stop Number	Stop Name	Metres	Miles
NTHTSN S	NTHTSN S		NORTHOLT STATION		
	NTHTSN	18221	Northolt Station	0	0.00
		16142	Moat Farm Road	298	0.19
		16144	Kingston Close	399	0.25
		16146	Sycamore Close	701	0.44
		16148	Bengarth Road / Northolt Library	192	0.12
	YEADWH	37263	Yeading / White Hart	478	0.30
		15785	Church Road	251	0.16
		14889	Wayfarer Road	386	0.24
		20494	Broadmead Road	440	0.27
		15787	Adrienne Avenue	376	0.23
		15789	Greenford High School	356	0.22
		15791	Eastmead Avenue	424	0.26
		15300	Pembroke Road	341	0.21
	GNFDBY	2031	Greenford Broadway	380	0.24
		33862	Clifton Road	247	0.15
		17025	Greenford Avenue	619	0.38
		17026	Cuckoo Avenue	232	0.14
		25078	Gurnell Leisure Centre	508	0.32
		15678	Ruislip Road East	416	0.26
		15681	Scotch Common	381	0.24
		20387	Kent Gardens	373	0.23
		20385	Pitshanger Library	385	0.24
		20383	St Barnabas Church	327	0.20
		20380	Fairlea Place	372	0.23
		10580	Montpelier Road	317	0.20
		15689	Marchwood Crescent	146	0.09
		15691	Castlebar Road	389	0.24
		BP1008	Ealing Bdy Stn / Haven Green	443	0.28
	EALBSN	34028	Ealing Broadway Station	143	0.09
		20519	North Common Road	381	0.24
		3053	Hanger Lane	299	0.19
	EALCSN	688	Ealing Common Station	334	0.21
		3051	Birch Grove	356	0.22
		3049	Twyford Avenue	217	0.13
		2036	Acton Tram Depot	291	0.18
	ACTNHS	R0742	King Street	371	0.23
		3043	Acton Old Town Hall	257	0.16
		3041	Acton Central Station	422	0.26
		3039	Acton Park	160	0.10
		11514	Acton Park / Greenview Close	326	0.20
		BP1808	Goldsmith Close	331	0.21
		11510	Shaa Road	87	0.05
		11506	Glendun Road	342	0.21
	EACTSC	2721	Western Circus	360	0.22
		11576	East Acton Station / Fitzneal Street	326	0.20
		11572	Wulfstan Street	405	0.25
		11568	Hammersmith Hospital	509	0.32
		11566	Latymer Upper School / Playing Fields	462	0.29
		8910	North Pole Road	193	0.12
	WORMPH	11564	North Pole Road / Scrubs Lane	145	0.09
		36798	Highever Road	315	0.20
		15278	Dalgarno Gardens	227	0.14
		26493	St Charles Health & Wellbeing Centre	262	0.16
		11553	St Charles Square	337	0.21
		11551	Oxford Gardens	285	0.18
		25448	Cambridge Gardens / Ladbroke Grove	286	0.18
	LADBSN	9481	Ladbroke Grove Station	196	0.12
		11539	Portobello Road	315	0.20
		11537	Powis Gardens	277	0.17
		11696	Shrewsbury Road / Brunel Estate	404	0.25
		11693	St Stephens Gardens	207	0.13
	WBGRCR	1261	Chepstow Road/Westbourne Grove	374	0.23
		11671	Queensway	292	0.18
		16972	Porchester Terrace North	276	0.17
		35232	Westbourne Terrace	378	0.23
		29397	Paddington Station / Eastbourne Terrace	314	0.20
	PADDPR	14020	Paddington Station	391	0.24
		11663	St Mary's Hospital	171	0.11
		58	Sussex Gardens	429	0.27
		1590	George Street	338	0.21
		621	Marble Arch / Edgware Road	407	0.25
	MARBOS	177	Marble Arch Station	248	0.15
		175	Selfridges	404	0.25
	OXFCOS	34554	Oxford Circus	497	0.31
		15783	Gt Titchfield St Photographers' Gallery	419	0.26
		830	Wardour Street	199	0.12
	TCTROS	37317	Tottenham Court Road Station	362	0.22
		37671	British Museum	572	0.36
		BP1780	Montague Street	277	0.17
	RSSQNS	33925	Russell Square Station	247	0.15
		RSSQNS S	RUSSELL SQUARE, NORTH SIDE	0	0.00
<b>TOTAL ROUTE MILEAGE - OUT DIRECTION</b>				26600	16.53
				metres	miles

**TRANCHE 443**

BACK DIRECTION				
Timing Point Code	Stop Number	Stop Name	Metres	Miles
RSSQNS S		RUSSELL SQUARE, NORTH SIDE		
RSSQNS	33925	Russell Square Station	0	0.00
	BP1779	Bedford Place	417	0.26
	37672	British Museum	256	0.16
	35030	Tottenham Court Road Station	478	0.30
TCTROS	976	Wardour Street	535	0.33
	33924	Gt Titchfield St Photographers' Gallery	297	0.18
OXFCOS	33926	Oxford Circus Station / Harewood Place	332	0.21
	29104	Bond Street Station	428	0.27
MARBOS	179	Marble Arch Station	500	0.31
	14	Marble Arch / Edgware Road	609	0.38
	35420	Burwood Place	474	0.29
	33283	Sussex Gardens	326	0.20
	33284	St Mary's Hospital	294	0.18
PADDPR	11666	Paddington Station	319	0.20
	29396	Paddington Station / Eastbourne Terrace	332	0.21
	11670	Westbourne Terrace	189	0.12
	34145	Gloucester Terrace	240	0.15
	1743	Westbourne Grove / Queensway	363	0.23
WBGRCR	1263	Artesian Road	508	0.32
	11692	St Stephens Gardens	311	0.19
	11697	Great Western Road	258	0.16
	11538	Powis Gardens	243	0.15
	11540	Portobello Road	203	0.13
LADBSN	9482	Ladbroke Grove Station	517	0.32
	11550	Cambridge Gardens / Ladbroke Grove	161	0.10
	11552	Oxford Gardens	256	0.16
	15279	St Charles Square	326	0.20
	BP1733	Oakworth Road	135	0.08
	26492	St Charles Health & Wellbeing Centre	180	0.11
	15277	Dalgarno Gardens	278	0.17
	BP2865	Highlever Road	212	0.13
WORMPH	17368	North Pole Road	252	0.16
	8909	Caverswall Street	259	0.16
	11567	Latymer Upper School / Playing Fields	226	0.14
	11569	Hammersmith Hospital	401	0.25
	11573	Wulfstan Street	634	0.39
	11577	East Acton Station	346	0.21
	BP2305	Westway	162	0.10
EACTSC	2713	East Acton Lane / Old Oak Road	107	0.07
	11507	King Fahad Academy	261	0.16
	26825	Beechwood Grove	280	0.17
	11511	Shaa Road	203	0.13
	11515	Acton Park / Greenview Close	484	0.30
	3040	Acton Park	338	0.21
	3042	Acton Central Station	240	0.15
	3044	Acton Old Town Hall	201	0.12
	17303	Acton Market Place	226	0.14
ACTNHS	2038	Steyne Road	258	0.16
	34178	Acton Tram Depot	271	0.17
	3050	Twyford Avenue	308	0.19
	3052	Birch Grove	277	0.17
EALCSN	4639	Ealing Common Station	138	0.09
	1407	Hanger Lane	444	0.28
	733	Ealing Broadway	518	0.32
EALBSN	CW25	Haven Green/Ealing Broadway Stn	1139	0.71
	15690	Castlebar Road	283	0.18
	15688	Marchwood Crescent	369	0.23
	20379	Montpelier Road	216	0.13
	20381	Fairlea Place	317	0.20
	20382	St Barnabas Church	178	0.11
	20384	Harrow View Road	417	0.26
	20386	Kent Gardens	288	0.18
	20388	Scotch Common	552	0.34
	15679	Ruislip Road East	271	0.17
	25079	Gurnell Leisure Centre	568	0.35
	17027	Cuckoo Avenue	321	0.20
	17024	Greenford Avenue	272	0.17
	BP095	Clifton Road	679	0.42
GNFDBY	2032	Greenford Broadway	257	0.16
	15299	Pembroke Road	390	0.24
	15792	Beechwood Avenue	429	0.27
	15790	Greenford Sports Centre	409	0.25
	15788	Adrienne Avenue	234	0.15
	20495	Broadmead Road	496	0.31
	14890	Wayfarer Road	468	0.29
YEADWH	33016	Yeading / White Hart	683	0.42
	16149	Bengarth Road / Northolt Library	306	0.19
	37429	Sycamore Close	335	0.21
	16147	Target Roundabout	279	0.17
	37195	Kingston Close	327	0.20
	16145	Alderney Gardens	210	0.13
	37262	Moad Farm Road	240	0.15
NHTSN	14908	Northolt Station	256	0.16
NHTSN S		NORTHOLT STATION	0	0.00
<b>TOTAL ROUTE MILEAGE - BACK DIRECTION</b>			28000 metres	17.40 miles